

Anti-RPS6 (phospho S235 + S236) antibody [SP50] ab101691

 **RabMAb**

8 图像

概述

产品名称	Anti-RPS6 (phospho S235 + S236)抗体[SP50]
描述	兔单克隆抗体[SP50] to RPS6 (phospho S235 + S236)
宿主	Rabbit
经测试应用	适用于: Dot blot, IHC-P, ICC/IF, Flow Cyt (Intra)
种属反应性	与反应: Mouse, Human
免疫原	Synthetic peptide within Human RPS6 aa 200 to the C-terminus (phospho S235 + S236). The exact sequence is proprietary. Database link: P62753
阳性对照	IHC-P: Human breast carcinoma and tonsil tissue; Mouse Spleen tissue; Rat Spleen Tissue ICC/IF: PC-3 cells. Flow Cyt (Intra): PC-3 cells.
常规说明	This product is FOR RESEARCH USE ONLY. For commercial use, please contact partnerships@abcam.com. Rat: We have preliminary internal testing data to indicate this antibody may not react with this species. Please contact us for more information.

性能

形式	Liquid
存放说明	Shipped at 4°C. Store at +4°C. Do Not Freeze.
存储溶液	pH: 7.60 Preservative: 0.1% Sodium azide Constituents: PBS, 1% BSA
纯度	Protein A/G purified
纯化说明	Purified from TCS by protein A/G.
克隆	单克隆
克隆编号	SP50
同种型	IgG

应用

The Abpromise guarantee **Abpromise™**承诺保证使用ab101691于以下的经测试应用

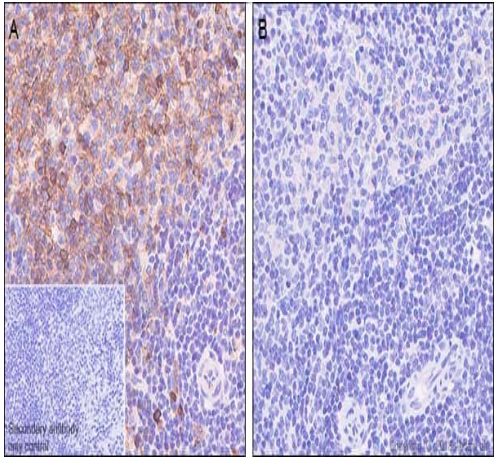
“应用说明”部分 下显示的仅为推荐的起始稀释度;实际最佳的稀释度/浓度应由使用者检定。

应用	Ab评论	说明
Dot blot		Use a concentration of 0.123 µg/ml.
IHC-P		1/100. Perform heat mediated antigen retrieval with citrate buffer pH 6 before commencing with IHC staining protocol.
ICC/IF		1/500.
Flow Cyt (Intra)		1/200.

靶标

功能	May play an important role in controlling cell growth and proliferation through the selective translation of particular classes of mRNA.
序列相似性	Belongs to the ribosomal protein S6e family.
翻译后修饰	Ribosomal protein S6 is the major substrate of protein kinases in eukaryote ribosomes. The phosphorylation is stimulated by growth factors, tumor promoting agents, and mitogens. It is dephosphorylated at growth arrest.

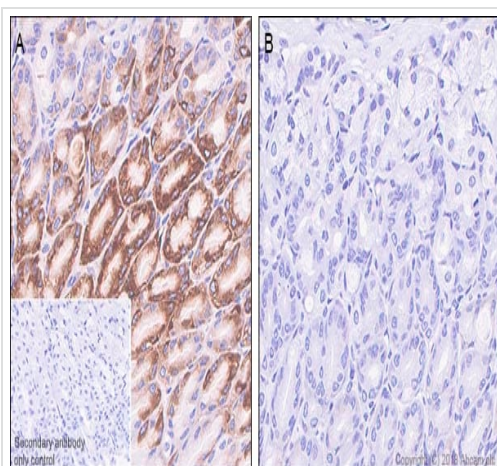
图片



Immunohistochemistry (Formalin/PFA-fixed paraffin-embedded sections) - Anti-RPS6 (phospho S235 + S236) antibody [SP50] (ab101691)

Immunohistochemistry (Formalin/PFA-fixed paraffin-embedded sections) analysis of Rat spleen tissue sections labeling RPS6 with ab101691 at 1/100 dilution (1.23 µg/ml). Heat mediated antigen retrieval with sodium citrate buffer (pH 6.0, epitope retrieval solution 1) for 10mins. Dako™REAL™ EnVision™ Detection System (K5007) was used as the secondary antibody. Hematoxylin was used as a counterstain. Cytoplasmic staining on human rat spleen without alkaline phosphatase treatment (image A); and no signal was detected when tissues were treated with alkaline phosphatase (image B), performed on a Leica Biosystems BOND™ RX instrument.

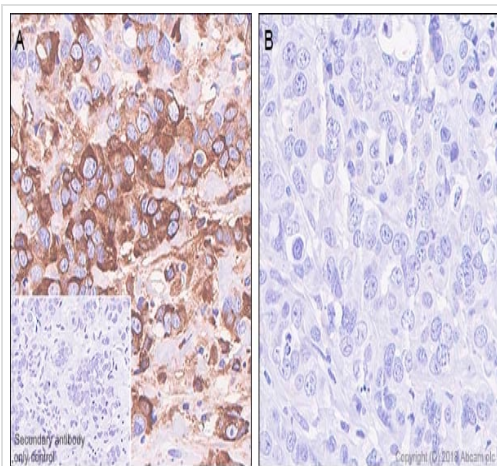
The section was incubated with ab101691 for 10 mins at room temperature.



Immunohistochemistry (Formalin/PFA-fixed paraffin-embedded sections) - Anti-RPS6 (phospho S235 + S236) antibody [SP50] (ab101691)

Immunohistochemistry (Formalin/PFA-fixed paraffin-embedded sections) analysis of Mouse stomach tissue sections labeling RPS6 with ab101691 at 1/100 dilution (1.23 µg/ml). Heat mediated antigen retrieval with sodium citrate buffer (pH 6.0, epitope retrieval solution 1) for 10mins. Dako™REAL™ EnVision™ Detection System (K5007) was used as the secondary antibody. Hematoxylin was used as a counterstain. Cytoplasmic staining on mouse stomach without alkaline phosphatase treatment (image A); and no signal was detected when tissues were treated with alkaline phosphatase (image B), performed on a Leica Biosystems BOND™ RX instrument.

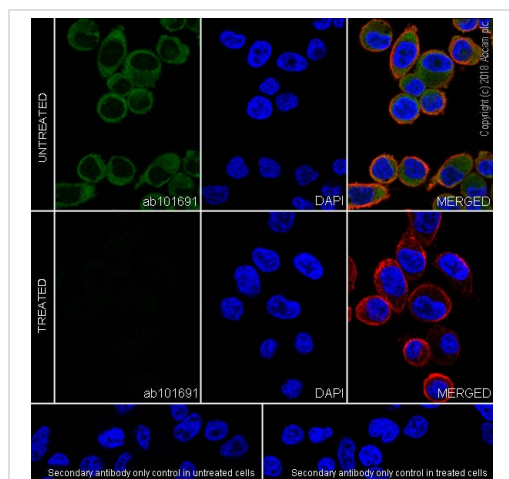
The section was incubated with ab101691 for 10 mins at room temperature.



Immunohistochemistry (Formalin/PFA-fixed paraffin-embedded sections) - Anti-RPS6 (phospho S235 + S236) antibody [SP50] (ab101691)

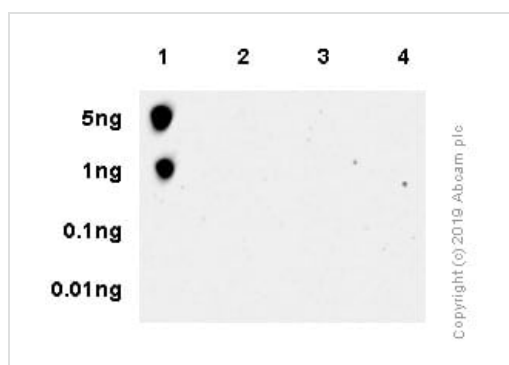
Immunohistochemistry (Formalin/PFA-fixed paraffin-embedded sections) analysis of Human breast carcinoma tissue sections labeling RPS6 with ab101691 at 1/100 dilution (1.23 µg/ml). Heat mediated antigen retrieval with sodium citrate buffer (pH 6.0, epitope retrieval solution 1) for 10mins. Dako™ REAL™ EnVision™ Detection System (K5007) was used as the secondary antibody. Hematoxylin was used as a counterstain. Cytoplasmic staining on human breast carcinoma without alkaline phosphatase treatment (image A); and no signal was detected when tissues were treated with alkaline phosphatase (image B), performed on a Leica Biosystems BOND™ RX instrument.

The section was incubated with ab101691 for 10 mins at room temperature.



Immunocytochemistry/ Immunofluorescence - Anti-RPS6 (phospho S235 + S236) antibody [SP50] (ab101691)

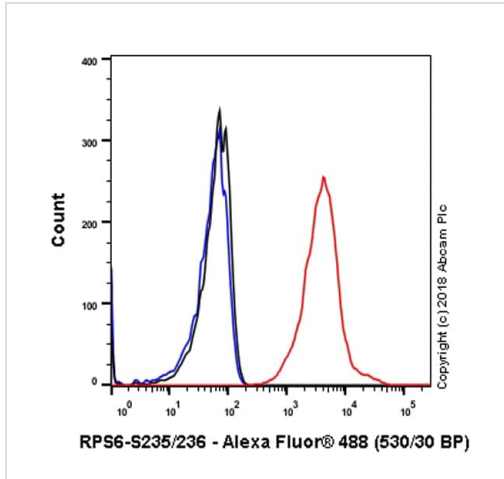
Immunocytochemistry/ Immunofluorescence analysis of PC-3 (human prostate adenocarcinoma epithelial cell) treated with Lambda phosphatase cells labeling RPS6 with purified ab101691 at 1:500 (0.25 µg/ml). Cells were fixed in 4% paraformaldehyde and permeabilized with 0.1% Triton X-100. Cells were counterstained with Ab195889 Anti-alpha Tubulin antibody [DM1A] - Microtubule Marker (Alexa Fluor® 594) 1:200 (2.5 µg/ml). Goat anti rabbit IgG (Alexa Fluor® 488, [ab150077](#)) was used as the secondary antibody at 1:1000 (2 µg/ml) dilution. DAPI nuclear counterstain. PBS instead of the primary antibody was used as the secondary antibody only control.



Dot Blot - Anti-RPS6 (phospho S235 + S236) antibody [SP50] (ab101691)

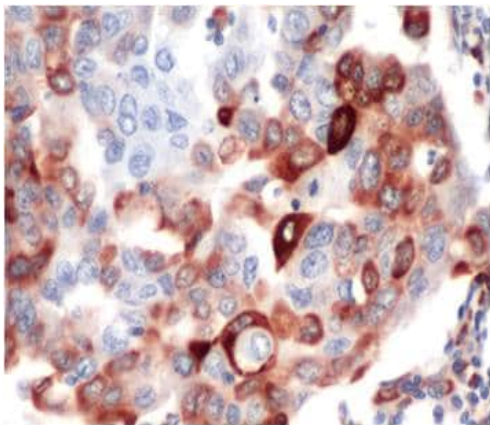
Dot blot analysis of RPS6 (phospho S235 + S236) peptide (Lane 1), RPS6 (phospho S235) peptide (phospho 2) RPS6 (phospho S236) peptide (Lane 3) and RPS6 non-phospho peptide (Lane 4) labeling RPS6 (phospho S235 + S236) peptide with purified ab101691 at 0.123 ug/mL. [ab97051](#) was used as the secondary antibody at 0.01 ug/mL.

Blocking buffer: 5% NFDM/TBST. Dilution buffer: 5% NFDM /TBST



Flow Cytometry analysis of PC-3 (Human prostate adenocarcinoma epithelial cell) cells labeling RPS6 with purified ab101691 at 1:200 dilution (0.615 µg/ml) Red. Cells were fixed with 4% paraformaldehyde . A Goat anti rabbit IgG (Alexa Fluor® 488, **ab150077**) secondary antibody was used at 1:2000 dilution. Isotype control - Rabbit monoclonal IgG (**ab172730**) / Black. Unlabeled control - Unlabelled cells / Blue.

Flow Cytometry (Intracellular) - Anti-RPS6 (phospho S235 + S236) antibody [SP50] (ab101691)



ab101691 at 1/100 dilution staining S6K in Human breast carcinoma by Immunohistochemistry Formalin-fixed, Paraffin-embedded tissue.

Immunohistochemistry (Formalin/PFA-fixed paraffin-embedded sections) - Anti-RPS6 (phospho S235 + S236) antibody [SP50] (ab101691)

Why choose a recombinant antibody?



Research with confidence
Consistent and reproducible results



Long-term and scalable supply
Recombinant technology



Success from the first experiment
Confirmed specificity



Ethical standards compliant
Animal-free production

Anti-RPS6 (phospho S235 + S236) antibody [SP50]
(ab101691)

Please note: All products are "FOR RESEARCH USE ONLY. NOT FOR USE IN DIAGNOSTIC PROCEDURES"

Our Abpromise to you: Quality guaranteed and expert technical support

- Replacement or refund for products not performing as stated on the datasheet
- Valid for 12 months from date of delivery
- Response to your inquiry within 24 hours
- We provide support in Chinese, English, French, German, Japanese and Spanish
- Extensive multi-media technical resources to help you
- We investigate all quality concerns to ensure our products perform to the highest standards

If the product does not perform as described on this datasheet, we will offer a refund or replacement. For full details of the Abpromise, please visit <https://www.abcam.cn/abpromise> or contact our technical team.

Terms and conditions

- Guarantee only valid for products bought direct from Abcam or one of our authorized distributors