

# Anti-RPS6 antibody - Ribosome Marker ab70227

★★★★★ [2 Abreviews](#) [10 References](#) [3 图像](#)

### 概述

产品名称	Anti-RPS6抗体- Ribosome Marker
描述	兔多克隆抗体to RPS6 - Ribosome Marker
宿主	Rabbit
经测试应用	适用于: WB, IP
种属反应性	与反应: Mouse, Human 预测可用于: Rat, Sheep, Rabbit, Goat, Horse, Chicken, Guinea pig, Cow, Dog, Turkey, Pig, Chimpanzee, Reptile, Rhesus monkey, Gorilla, Orangutan 
免疫原	Synthetic peptide corresponding to a region between residues 100 and 150 of human RPS6. (NP_001001.2).
常规说明	<p>The Life Science industry has been in the grips of a reproducibility crisis for a number of years. Abcam is leading the way in addressing this with our range of recombinant monoclonal antibodies and knockout edited cell lines for gold-standard validation. Please check that this product meets your needs before purchasing.</p> <p>If you have any questions, special requirements or concerns, please send us an inquiry and/or contact our Support team ahead of purchase. Recommended alternatives for this product can be found below, along with publications, customer reviews and Q&amp;As</p>

### 性能

形式	Liquid
存放说明	Shipped at 4°C. Upon delivery aliquot and store at -20°C. Avoid freeze / thaw cycles.
存储溶液	pH: 6.8 Preservative: 0.09% Sodium azide Constituents: 0.1% BSA, Tris buffered saline
纯度	Immunogen affinity purified
克隆	多克隆
同种型	IgG

### 应用

## The Abpromise guarantee

**Abpromise™** 承诺保证使用ab70227于以下的经测试应用

“应用说明”部分下显示的仅为推荐的起始稀释度;实际最佳的稀释度/浓度应由使用者检定。

应用	Ab评论	说明
WB	★★★★★ (2)	1/1000 - 1/10000. Detects a band of approximately 30 kDa (predicted molecular weight: 30 kDa).
IP		Use at 2-5 µg/mg of lysate.

## 靶标

### 功能

May play an important role in controlling cell growth and proliferation through the selective translation of particular classes of mRNA.

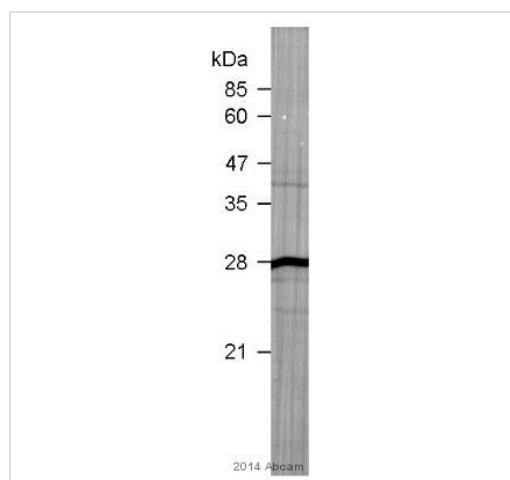
### 序列相似性

Belongs to the ribosomal protein S6e family.

### 翻译后修饰

Ribosomal protein S6 is the major substrate of protein kinases in eukaryote ribosomes. The phosphorylation is stimulated by growth factors, tumor promoting agents, and mitogens. It is dephosphorylated at growth arrest.

## 图片



Western blot - Anti-RPS6 antibody - Ribosome Marker (ab70227)

This image is courtesy of an anonymous Abreview

Anti-RPS6 antibody - Ribosome Marker (ab70227) at 1/1000 dilution + *Caenorhabditis elegans* whole adult tissue lysate at 200 µg

### Secondary

HRP-conjugated goat anti-rabbit IgG polyclonal at 1/5000 dilution

Developed using the ECL technique.

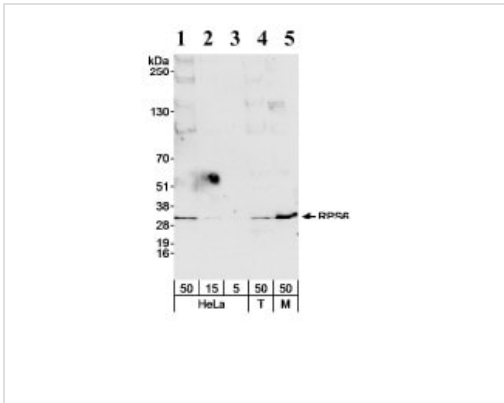
Performed under reducing conditions.

**Predicted band size:** 30 kDa

**Observed band size:** 28 kDa

**Additional bands at:** 24 kDa (possible non-specific binding), 26 kDa (possible non-specific binding), 40 kDa (possible non-specific binding)

**Exposure time:** 40 seconds



Western blot - Anti-RPS6 antibody - Ribosome Marker (ab70227)

**All lanes :** Anti-RPS6 antibody - Ribosome Marker (ab70227) at 0.04 µg/ml

**Lane 1 :** Whole cell lysate from HeLa cells at 50 µg

**Lane 2 :** Whole cell lysate from HeLa cells at 15 µg

**Lane 3 :** Whole cell lysate from HeLa cells at 5 µg

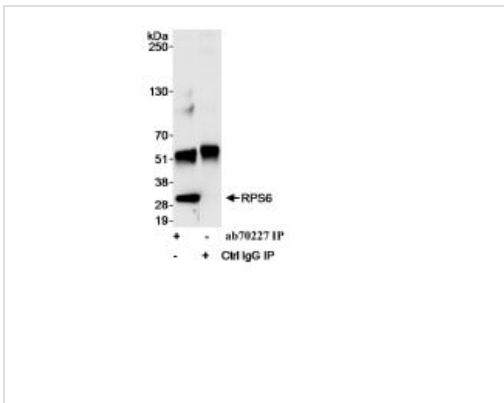
**Lane 4 :** Whole cell lysate from 293T cells at 50 µg

**Lane 5 :** Whole cell lysate from NIH3T3 cells at 50 µg

**Predicted band size:** 30 kDa

**Observed band size:** 30 kDa

**Exposure time:** 30 seconds



Immunoprecipitation - Anti-RPS6 antibody - Ribosome Marker (ab70227)

Detection of Human RPS6 by Immunoprecipitation. Samples: A) Whole cell lysate from HeLa cells (1 mg/IP; 1/4 of IP loaded) using affinity purified ab70227 at 3 µg/mg lysate for IP and at 0.04 µg/ml for subsequent WB detection. Second lane represents IgG IP control.

**Please note:** All products are "FOR RESEARCH USE ONLY. NOT FOR USE IN DIAGNOSTIC PROCEDURES"

### Our Abpromise to you: Quality guaranteed and expert technical support

- Replacement or refund for products not performing as stated on the datasheet
- Valid for 12 months from date of delivery
- Response to your inquiry within 24 hours
- We provide support in Chinese, English, French, German, Japanese and Spanish
- Extensive multi-media technical resources to help you
- We investigate all quality concerns to ensure our products perform to the highest standards

If the product does not perform as described on this datasheet, we will offer a refund or replacement. For full details of the Abpromise,

please visit <https://www.abcam.cn/abpromise> or contact our technical team.

## **Terms and conditions**

---

- Guarantee only valid for products bought direct from Abcam or one of our authorized distributors