


Anti-RPS6 antibody - Ribosome Marker ab40820

★★★★☆ [6 Abreviews](#) [42 References](#) [4 图像](#)

概述

| | |
|--------------|---|
| 产品名称 | Anti-RPS6抗体- Ribosome Marker |
| 描述 | 兔多克隆抗体to RPS6 - Ribosome Marker |
| 宿主 | Rabbit |
| 特异性 | Replenishment batches of our polyclonal antibody, ab40820 are tested in WB. Previous batches were additionally validated in ICC/IF and IHC-P. These applications are still expected to work and are covered by our Abpromise guarantee. You may also be interested in our alternative recombinant antibody, ab225676 . |
| 经测试应用 | 适用于: IHC-P, WB, ICC/IF |
| 种属反应性 | 与反应: Human 预测可用于: Mouse, Rat, Saccharomyces cerevisiae, Schizosaccharomyces pombe, a wide range of other species  |
| 免疫原 | Synthetic peptide conjugated to KLH derived from within residues 1 - 100 of Human RPS6. 参阅 Abcam的专有抗源政策 (Peptide available as ab42866 .) |
| 阳性对照 | WB: HeLa, Jurkat, A431, HEK293, HepG2, MCF7, and SHSY-5Y whole cell lysates. IHC-P: Human skin melanoma tissue. ICC/IF: A431 cells. |
| 常规说明 | <p>The Life Science industry has been in the grips of a reproducibility crisis for a number of years. Abcam is leading the way in addressing this with our range of recombinant monoclonal antibodies and knockout edited cell lines for gold-standard validation. Please check that this product meets your needs before purchasing.</p> <p>If you have any questions, special requirements or concerns, please send us an inquiry and/or contact our Support team ahead of purchase. Recommended alternatives for this product can be found below, along with publications, customer reviews and Q&As</p> |

性能

| | |
|-------------|--|
| 形式 | Liquid |
| 存放说明 | Shipped at 4°C. Store at +4°C short term (1-2 weeks). Upon delivery aliquot. Store at -20°C or -80°C. Avoid freeze / thaw cycle. |
| 存储溶液 | pH: 7.40 Preservative: 0.02% Sodium azide Constituent: PBS |

Batches of this product that have a concentration < 1mg/ml may have BSA added as a stabilising agent. If you would like information about the formulation of a specific lot, please contact our scientific support team who will be happy to help.

纯度 Immunogen affinity purified
克隆 多克隆
同种型 IgG

应用

The Abpromise guarantee **Abpromise™**承诺保证使用ab40820于以下的经测试应用

“应用说明”部分下显示的仅为推荐的起始稀释度;实际最佳的稀释度/浓度应由使用者检定。

| 应用 | Ab评论 | 说明 |
|--------|-----------|---|
| IHC-P | | Use a concentration of 1 µg/ml. Perform heat mediated antigen retrieval before commencing with IHC staining protocol. |
| WB | ★★★★☆ (5) | Use a concentration of 1 µg/ml. Detects a band of approximately 31 kDa (predicted molecular weight: 28 kDa). |
| ICC/IF | ★★★★☆ (1) | Use a concentration of 5 µg/ml. |

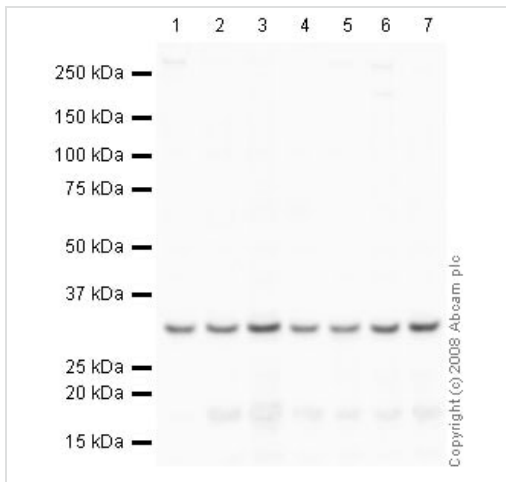
靶标

功能 May play an important role in controlling cell growth and proliferation through the selective translation of particular classes of mRNA.

序列相似性 Belongs to the ribosomal protein S6e family.

翻译后修饰 Ribosomal protein S6 is the major substrate of protein kinases in eukaryote ribosomes. The phosphorylation is stimulated by growth factors, tumor promoting agents, and mitogens. It is dephosphorylated at growth arrest.

图片



Western blot - Anti-RPS6 antibody - Ribosome Marker (ab40820)

All lanes : Anti-RPS6 antibody - Ribosome Marker (ab40820) at 1 μ g/ml

Lane 1 : HeLa (Human epithelial carcinoma cell line) Whole Cell Lysate

Lane 2 : Jurkat (Human T cell lymphoblast-like cell line) Whole Cell Lysate

Lane 3 : A431 (Human epithelial carcinoma cell line) Whole Cell Lysate

Lane 4 : HEK293 Human embryonic kidney cell line Whole Cell Lysate

Lane 5 : HepG2 (Human hepatocellular liver carcinoma cell line) Whole Cell Lysate

Lane 6 : MCF7 (Human breast adenocarcinoma cell line) Whole Cell Lysate

Lane 7 : SHSY-5Y (Human neuroblastoma cell line) Whole Cell Lysate

Lysates/proteins at 10 μ g per lane.

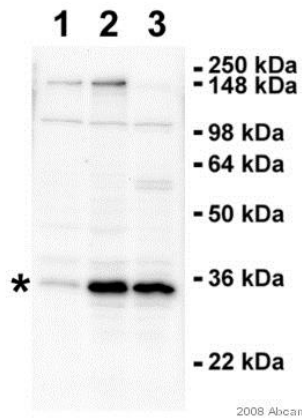
Secondary

All lanes : Goat polyclonal to Rabbit IgG - H&L - Pre-Adsorbed (HRP) at 1/3000 dilution

Performed under reducing conditions.

Predicted band size: 28 kDa

Observed band size: 31 kDa



Western blot - Anti-RPS6 antibody - Ribosome Marker (ab40820)

This image is courtesy of an Abreview submitted by Antibody Solutions Ltd.

All lanes : Anti-RPS6 antibody - Ribosome Marker (ab40820) at 2 $\mu\text{g/ml}$

Lane 1 : Whole cell lysate from mouse NIH-3T3 cell line

Lane 2 : Whole cell lysate from mouse MEF cell line

Lane 3 : Whole cell lysate from rat PC12 cell line

Lysates/proteins at 30 μg per lane.

Secondary

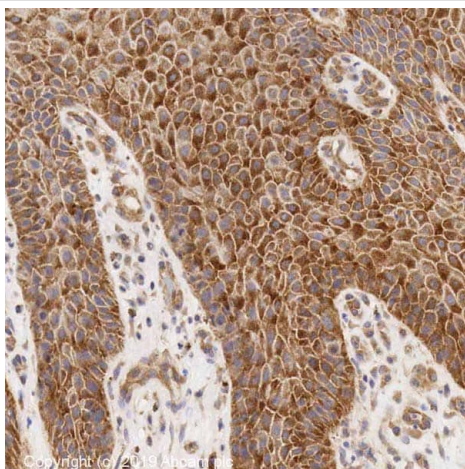
All lanes : HRP-conjugated pig anti rabbit Ig at 1/5000 dilution

Performed under reducing conditions.

Predicted band size: 28 kDa

Exposure time: 5 minutes

Detection method: Supersignal West Dura

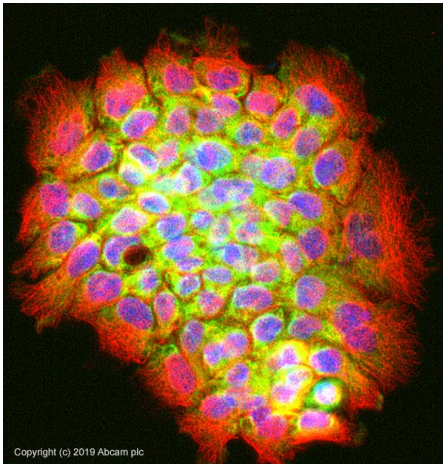


Immunohistochemistry (Formalin/PFA-fixed paraffin-embedded sections) - Anti-RPS6 antibody - Ribosome Marker (ab40820)

IHC image of RPS6 staining in a section of formalin-fixed paraffin-embedded normal human skin melanoma* performed on a Leica BOND™ system using the standard protocol F. The section was pre-treated using heat mediated antigen retrieval with sodium citrate buffer (pH6, epitope retrieval solution 1) for 20mins. The section was then incubated with ab40820, 5 $\mu\text{g/ml}$, for 15 mins at room temperature and detected using an HRP conjugated compact polymer system. DAB was used as the chromogen. The section was then counterstained with haematoxylin and mounted with DPX.

For other IHC staining systems (automated and non-automated) customers should optimize variable parameters such as antigen retrieval conditions, primary antibody concentration and antibody incubation times.

**Tissue obtained from the Human Research Tissue Bank, supported by the NIHR Cambridge Biomedical Research Centre*



Immunocytochemistry/ Immunofluorescence - Anti-RPS6 antibody - Ribosome Marker (ab40820)

ab40820 stained in A431 cells. Cells were fixed with 100% methanol (5 min) at room temperature and incubated with PBS containing 10% goat serum, 0.3 M glycine, 1% BSA and 0.1% Triton for 1h at room temperature to permeabilise the cells and block non-specific protein-protein interactions. The cells were then incubated with the antibody ab40820 at 5µg/ml and **ab7291** (Mouse monoclonal to alpha Tubulin - Loading Control) used at a 1/1000 dilution overnight at +4°C. The secondary antibodies were **ab150081**, Goat Anti-Rabbit IgG H&L (Alexa Fluor® 488) preadsorbed, (pseudo-colored green) and **ab150120**, Goat polyclonal Secondary Antibody to Mouse IgG - H&L (Alexa Fluor® 594) preadsorbed, (colored red), both used at a 1/1000 dilution for 1 hour at room temperature. DAPI was used to stain the cell nuclei (colored blue) at a concentration of 1.43 µM for 1 hour at room temperature.

Please note: All products are "FOR RESEARCH USE ONLY. NOT FOR USE IN DIAGNOSTIC PROCEDURES"

Our Abpromise to you: Quality guaranteed and expert technical support

- Replacement or refund for products not performing as stated on the datasheet
- Valid for 12 months from date of delivery
- Response to your inquiry within 24 hours
- We provide support in Chinese, English, French, German, Japanese and Spanish
- Extensive multi-media technical resources to help you
- We investigate all quality concerns to ensure our products perform to the highest standards

If the product does not perform as described on this datasheet, we will offer a refund or replacement. For full details of the Abpromise, please visit <https://www.abcam.cn/abpromise> or contact our technical team.

Terms and conditions

- Guarantee only valid for products bought direct from Abcam or one of our authorized distributors