




Anti-RPS27/MPS1 antibody ab4385

4 References **1 图像**

概述

产品名称	Anti-RPS27/MPS1抗体
描述	山羊多克隆抗体to RPS27/MPS1
宿主	Goat
经测试应用	适用于: WB
种属反应性	与反应: Human 预测可用于: Mouse, Rat 
免疫原	Synthetic peptide corresponding to Human RPS27/MPS1 aa 2-14 (N terminal). Sequence: PLAKDLLHPSPEE-C (Peptide available as ab23033) <div>  Run BLAST with  Run BLAST with </div>
常规说明	<p>Official Gene Symbol - RPS27. LocusLink ID - 6232 (human); 57294 (mouse); 94266 (rat). Gene Ontology terms - structural constituent of ribosome; RNA binding; zinc ion binding; protein biosynthesis; cell proliferation; signal transduction; ribosome; cytosolic small ribosomal subunit (sensu Eukarya); intracellular.</p> <p>The Life Science industry has been in the grips of a reproducibility crisis for a number of years. Abcam is leading the way in addressing this with our range of recombinant monoclonal antibodies and knockout edited cell lines for gold-standard validation. Please check that this product meets your needs before purchasing.</p> <p>If you have any questions, special requirements or concerns, please send us an inquiry and/or contact our Support team ahead of purchase. Recommended alternatives for this product can be found below, along with publications, customer reviews and Q&As</p>

性能

形式	Liquid
存放说明	Shipped at 4°C. Upon delivery aliquot and store at -20°C or -80°C. Avoid repeated freeze / thaw cycles.
存储溶液	pH: 7.30 Preservative: 0.02% Sodium azide Constituents: 0.5% Tris, 0.5% BSA

纯度	Immunogen affinity purified
纯化说明	Purified from goat serum by ammonium sulphate precipitation followed by antigen affinity chromatography using the immunizing peptide.
克隆	多克隆
同种型	IgG

应用

The Abpromise guarantee **Abpromise™**承诺保证使用ab4385于以下的经测试应用

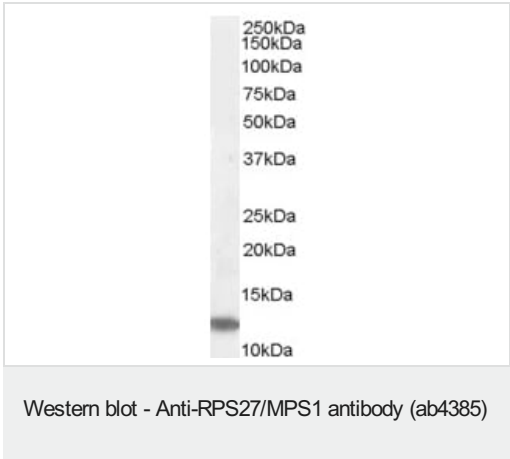
“应用说明”部分 下显示的仅为推荐的起始稀释度;实际最佳的稀释度/浓度应由使用者检定。

应用	Ab评论	说明
WB		Use a concentration of 0.03 - 0.1 µg/ml. Detects a band of approximately 12 kDa (predicted molecular weight: 10 kDa). 1 hour primary incubation is recommended for this product.

靶标

组织特异性	Expressed in a wide variety of actively proliferating cells and tumor tissues.
序列相似性	Belongs to the ribosomal protein S27e family.

图片



Anti-RPS27/MPS1 antibody (ab4385) at 0.05 µg/ml + Jurkat lysate (35µg protein in RIPA buffer).

Predicted band size: 10 kDa
Observed band size: 12 kDa

Primary incubation was 1 hour. Detected by chemiluminescence.

Please note: All products are "FOR RESEARCH USE ONLY. NOT FOR USE IN DIAGNOSTIC PROCEDURES"

Our Abpromise to you: Quality guaranteed and expert technical support

- Replacement or refund for products not performing as stated on the datasheet
- Valid for 12 months from date of delivery
- Response to your inquiry within 24 hours

- We provide support in Chinese, English, French, German, Japanese and Spanish
- Extensive multi-media technical resources to help you
- We investigate all quality concerns to ensure our products perform to the highest standards

If the product does not perform as described on this datasheet, we will offer a refund or replacement. For full details of the Abpromise, please visit <https://www.abcam.cn/abpromise> or contact our technical team.

Terms and conditions

- Guarantee only valid for products bought direct from Abcam or one of our authorized distributors