

# Anti-RPLP1 antibody ab121190

[3 References](#) [6 图像](#)

### 概述

---

<b>产品名称</b>	Anti-RPLP1抗体
<b>描述</b>	兔多克隆抗体to RPLP1
<b>宿主</b>	Rabbit
<b>经测试应用</b>	<b>适用于:</b> ICC, IHC-P, WB
<b>种属反应性</b>	<b>与反应:</b> Human
<b>免疫原</b>	Recombinant fragment, corresponding to amino acids 1-109 of Human RPLP1 (P05386).
<b>阳性对照</b>	WB: HeLa whole cell lysate; IHC-P: Human cerebral cortex, cerebellum, skin, and prostate tissues; ICC: U-2 OS cells.
<b>常规说明</b>	<p>The Life Science industry has been in the grips of a reproducibility crisis for a number of years. Abcam is leading the way in addressing this with our range of recombinant monoclonal antibodies and knockout edited cell lines for gold-standard validation. Please check that this product meets your needs before purchasing.</p> <p>If you have any questions, special requirements or concerns, please send us an inquiry and/or contact our Support team ahead of purchase. Recommended alternatives for this product can be found below, along with publications, customer reviews and Q&amp;As</p>

### 性能

---

<b>形式</b>	Liquid
<b>存放说明</b>	Shipped at 4°C. Upon delivery aliquot and store at -20°C. Avoid freeze / thaw cycles.
<b>存储溶液</b>	pH: 7.20 Preservative: 0.02% Sodium azide Constituents: 59% PBS, 40% Glycerol (glycerin, glycerine)
<b>纯度</b>	Immunogen affinity purified
<b>克隆</b>	多克隆
<b>同种型</b>	IgG

### 应用

---

**The Abpromise guarantee**

**Abpromise™** 承诺保证使用ab121190于以下的经测试应用

“应用说明”部分 下显示的仅为推荐的起始稀释度;实际最佳的稀释度/浓度应由使用者检定。

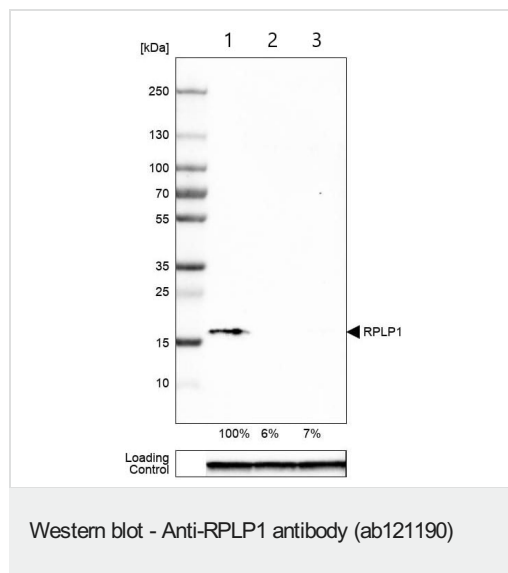
应用	Ab评论	说明
ICC		Use a concentration of 0.25 - 2 µg/ml.
IHC-P		1/200 - 1/500. Perform heat mediated antigen retrieval with citrate buffer pH 6 before commencing with IHC staining protocol.
WB		Use a concentration of 0.04 - 0.4 µg/ml.

## 靶标

**功能** Plays an important role in the elongation step of protein synthesis.

**序列相似性** Belongs to the ribosomal protein L12P family.

## 图片



**All lanes :** Anti-RPLP1 antibody (ab121190) at 0.4 µg/ml

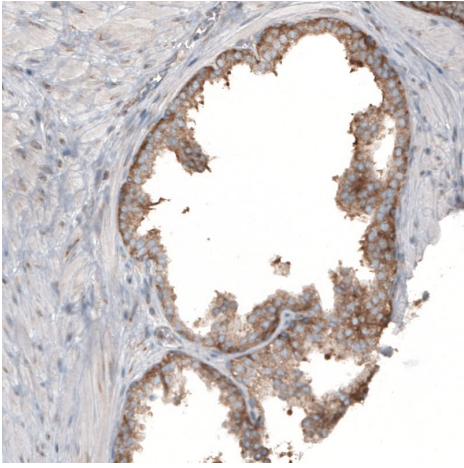
**Lane 1 :** HeLa (human epithelial cell line from cervix adenocarcinoma) transfected with control siRNA, whole cell lysate

**Lane 2 :** HeLa (human epithelial cell line from cervix adenocarcinoma) transfected with RPLP1 specific siRNA probe #1, whole cell lysate

**Lane 3 :** HeLa (human epithelial cell line from cervix adenocarcinoma) transfected with RPLP1 specific siRNA probe #2, whole cell lysate

Remaining relative intensity is presented.

**Loading control:** Anti-GAPDH.



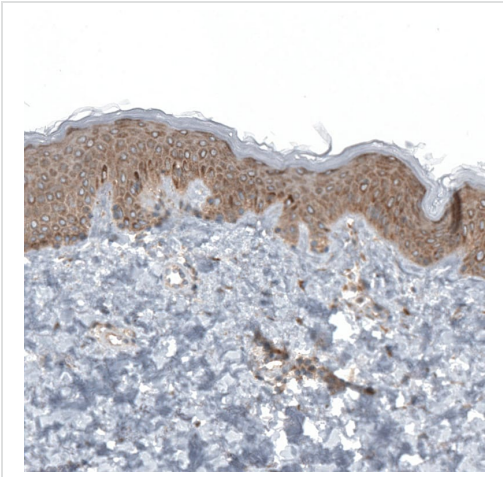
Immunohistochemistry (Formalin/PFA-fixed paraffin-embedded sections) - Anti-RPLP1 antibody (ab121190)

Immunohistochemistry (Formalin/PFA-fixed paraffin-embedded sections) analysis of human prostate tissue labelling RPLP1 with ab121190 at 1/200 dilution. Heat mediated antigen retrieval with citrate buffer pH 6 performed before commencing with IHC staining protocol.



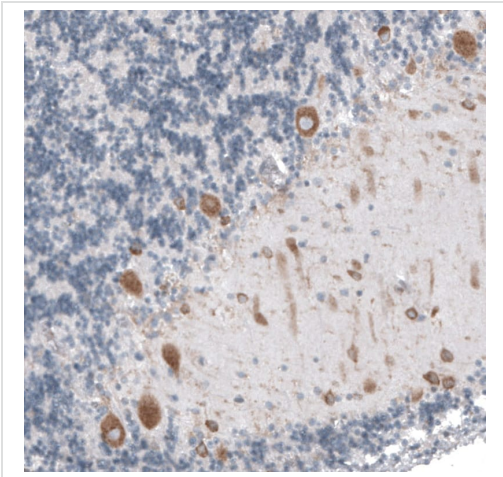
Immunocytochemistry - Anti-RPLP1 antibody (ab121190)

Immunocytochemistry analysis of U-2 OS cells labelling RPLP1 with ab121190 at 2 µg/mL. Cells were fixed with 4% paraformaldehyde and permeabilized with Triton X-100.



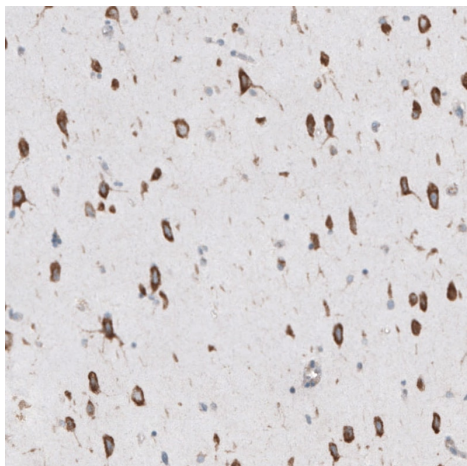
Immunohistochemistry (Formalin/PFA-fixed paraffin-embedded sections) - Anti-RPLP1 antibody (ab121190)

Immunohistochemistry (Formalin/PFA-fixed paraffin-embedded sections) analysis of human skin tissue labelling RPLP1 with ab121190 at 1/200 dilution. Heat mediated antigen retrieval with citrate buffer pH 6 performed before commencing with IHC staining protocol.



Immunohistochemistry (Formalin/PFA-fixed paraffin-embedded sections) - Anti-RPLP1 antibody (ab121190)

Immunohistochemistry (Formalin/PFA-fixed paraffin-embedded sections) analysis of human cerebellum tissue labelling RPLP1 with ab121190 at 1/200 dilution. Heat mediated antigen retrieval with citrate buffer pH 6 performed before commencing with IHC staining protocol.



Immunohistochemistry (Formalin/PFA-fixed paraffin-embedded sections) - Anti-RPLP1 antibody (ab121190)

Immunohistochemistry (Formalin/PFA-fixed paraffin-embedded sections) analysis of human cerebral cortex tissue labelling RPLP1 with ab121190 at 1/200 dilution. Heat mediated antigen retrieval with citrate buffer pH 6 performed before commencing with IHC staining protocol.

**Please note:** All products are "FOR RESEARCH USE ONLY. NOT FOR USE IN DIAGNOSTIC PROCEDURES"

### **Our Abpromise to you: Quality guaranteed and expert technical support**

---

- Replacement or refund for products not performing as stated on the datasheet
- Valid for 12 months from date of delivery
- Response to your inquiry within 24 hours
- We provide support in Chinese, English, French, German, Japanese and Spanish
- Extensive multi-media technical resources to help you
- We investigate all quality concerns to ensure our products perform to the highest standards

If the product does not perform as described on this datasheet, we will offer a refund or replacement. For full details of the Abpromise, please visit <https://www.abcam.cn/abpromise> or contact our technical team.

### **Terms and conditions**

---

- Guarantee only valid for products bought direct from Abcam or one of our authorized distributors