


Anti-RPL9 antibody ab102011

2 References **3 图像**

概述

产品名称	Anti-RPL9抗体
描述	兔多克隆抗体to RPL9
宿主	Rabbit
经测试应用	适用于: WB, ICC/IF
种属反应性	与反应: Mouse, Human 预测可用于: Rat, Cow, Zebrafish 
免疫原	Recombinant protein fragment containing a sequence corresponding to a region within amino acids 20 and 167 of Human RPL9 (AAH00483)
阳性对照	A549, HeLa, HepG2, HCT116, mouse brain
常规说明	<p>The Life Science industry has been in the grips of a reproducibility crisis for a number of years. Abcam is leading the way in addressing this with our range of recombinant monoclonal antibodies and knockout edited cell lines for gold-standard validation. Please check that this product meets your needs before purchasing.</p> <p>If you have any questions, special requirements or concerns, please send us an inquiry and/or contact our Support team ahead of purchase. Recommended alternatives for this product can be found below, along with publications, customer reviews and Q&As</p>

性能

形式	Liquid
存放说明	Shipped at 4°C. Upon delivery aliquot and store at -20°C or -80°C. Avoid repeated freeze / thaw cycles.
存储溶液	<p>pH: 7.00</p> <p>Preservative: 0.01% Thimerosal (merthiolate)</p> <p>Constituents: 1.21% Tris, 0.75% Glycine, 20% Glycerol (glycerin, glycerine)</p>
纯度	Immunogen affinity purified
克隆	多克隆
同种型	IgG

应用

The Abpromise guarantee

Abpromise™ 承诺保证使用ab102011于以下的经测试应用

“应用说明”部分 下显示的仅为推荐的起始稀释度;实际最佳的稀释度/浓度应由使用者检定。

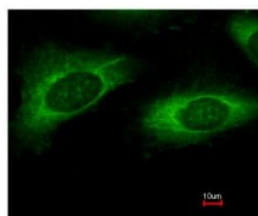
应用	Ab评论	说明
WB		1/500 - 1/3000. Predicted molecular weight: 22 kDa.
ICC/IF		1/100 - 1/200.

靶标

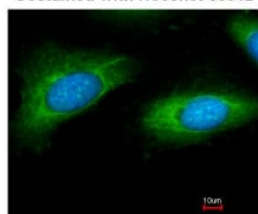
序列相似性

Belongs to the ribosomal protein L6P family.

图片

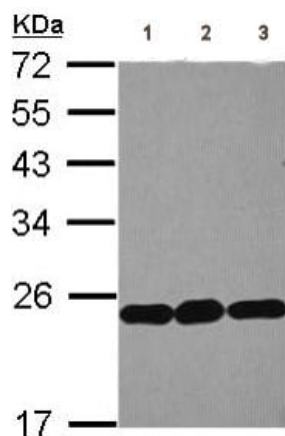


Costained with Hoechst 33342



Immunocytochemistry/ Immunofluorescence - Anti-RPL9 antibody (ab102011)

Immunofluorescence analysis of methanol-fixed HeLa, using ab102011 at 1/200 dilution.



Western blot - Anti-RPL9 antibody (ab102011)

All lanes : Anti-RPL9 antibody (ab102011) at 1/1000 dilution

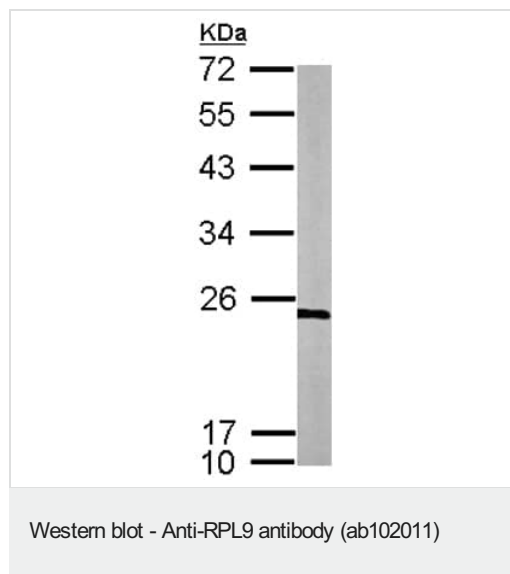
Lane 1 : HeLa whole cell lysate

Lane 2 : HepG2 whole cell lysate

Lane 3 : HCT116 whole cell lysate

Lysates/proteins at 30 µg per lane.

Predicted band size: 22 kDa



Anti-RPL9 antibody (ab102011) at 1/1000 dilution + mouse brain whole cell lysate at 50 µg

Predicted band size: 22 kDa

Please note: All products are "FOR RESEARCH USE ONLY. NOT FOR USE IN DIAGNOSTIC PROCEDURES"

Our Abpromise to you: Quality guaranteed and expert technical support

- Replacement or refund for products not performing as stated on the datasheet
- Valid for 12 months from date of delivery
- Response to your inquiry within 24 hours
- We provide support in Chinese, English, French, German, Japanese and Spanish
- Extensive multi-media technical resources to help you
- We investigate all quality concerns to ensure our products perform to the highest standards

If the product does not perform as described on this datasheet, we will offer a refund or replacement. For full details of the Abpromise, please visit <https://www.abcam.cn/abpromise> or contact our technical team.

Terms and conditions

- Guarantee only valid for products bought direct from Abcam or one of our authorized distributors