

Anti-RPL35 antibody ab121244

1 References 7 图像

概述	
产品名称	Anti-RPL35抗体
描述	兔多克隆抗体to RPL35
宿主	Rabbit
经测试应用	适用于: WB, ICC/IF, IHC-P
种属反应性	与反应: Human
免疫原	Recombinant protein corresponding to amino acids 2-122 of Human RPL35 (P42766).
阳性对照	IHC-P: Human pancreas, skin, cerebral cortex, colon and fallopian tube tissue. ICC/IF: Human cell line U-2 OS WB: MCF7 cell lysate
常规说明	<p>The Life Science industry has been in the grips of a reproducibility crisis for a number of years. Abcam is leading the way in addressing this with our range of recombinant monoclonal antibodies and knockout edited cell lines for gold-standard validation. Please check that this product meets your needs before purchasing.</p> <p>If you have any questions, special requirements or concerns, please send us an inquiry and/or contact our Support team ahead of purchase. Recommended alternatives for this product can be found below, along with publications, customer reviews and Q&As</p>
性能	
形式	Liquid
存放说明	Shipped at 4°C. Upon delivery aliquot and store at -20°C. Avoid freeze / thaw cycles.
存储溶液	pH: 7.20 Preservative: 0.02% Sodium azide Constituents: 59% PBS, 40% Glycerol (glycerin, glycerine)
纯度	Immunogen affinity purified
克隆	多克隆
同种型	IgG
应用	

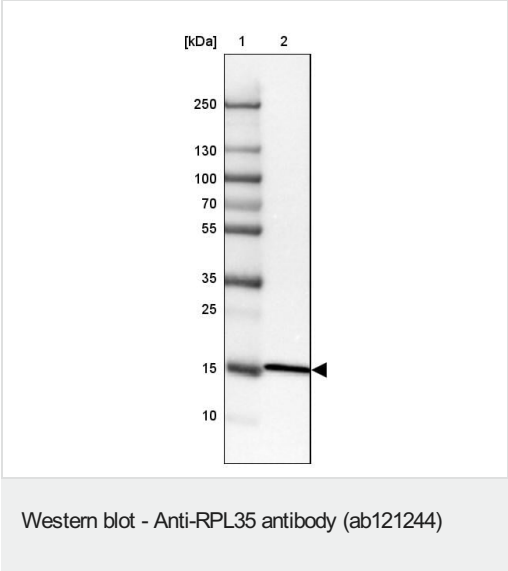
“应用说明”部分 下显示的仅为推荐的起始稀释度;实际最佳的稀释度/浓度应由使用者检定。

应用	Ab评论	说明
WB		Use a concentration of 0.04 - 0.4 µg/ml. Predicted molecular weight: 15 kDa.
ICC/IF		Use a concentration of 0.25 - 2 µg/ml.
IHC-P		1/50 - 1/200. Perform heat mediated antigen retrieval with citrate buffer pH 6 before commencing with IHC staining protocol.

靶标

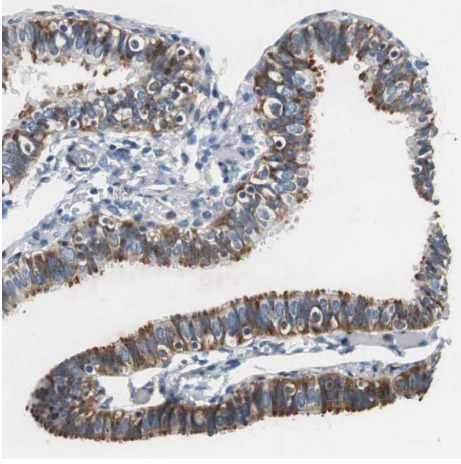
序列相似性Belongs to the ribosomal protein L29P family.

图片



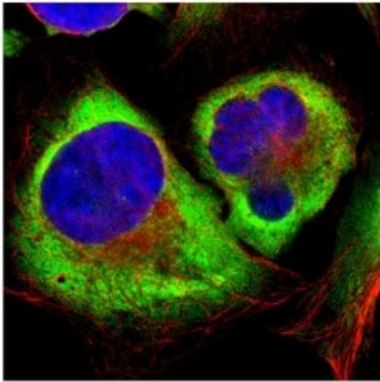
Anti-RPL35 antibody (ab121244) at 0.4 µg/ml + MCF7 cell lysate

Predicted band size: 15 kDa



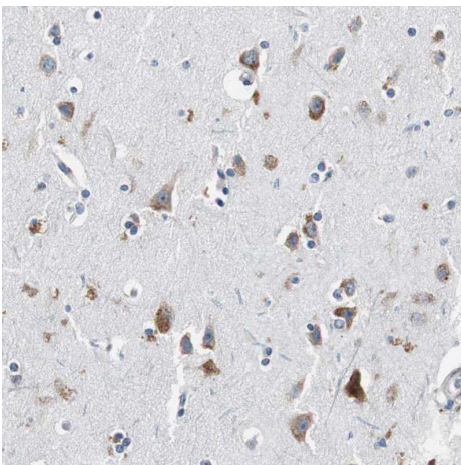
Immunohistochemistry (Formalin/PFA-fixed paraffin-embedded sections) - Anti-RPL35 antibody (ab121244)

Immunohistochemical analysis of human cerebral fallopian tube labeling rpl35 with ab121244. The data shows moderate cytoplasmic positivity in glandular cells.



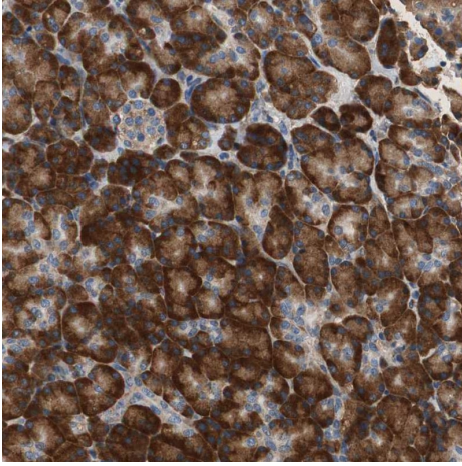
Immunocytochemistry/ Immunofluorescence - Anti-RPL35 antibody (ab121244)

Immunofluorescent staining with 4 μ g/ml ab121244 of Human cell line U-2 OS shows positivity in cytoplasm. Antibody staining is shown in green.



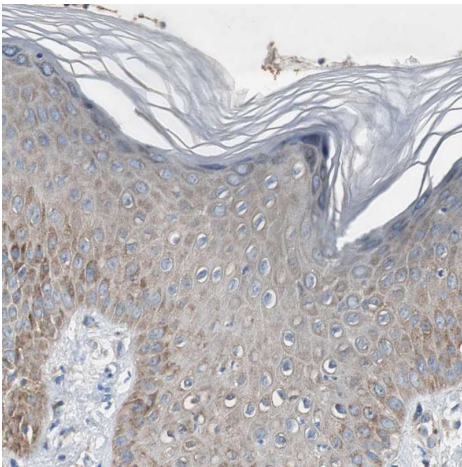
Immunohistochemistry (Formalin/PFA-fixed paraffin-embedded sections) - Anti-RPL35 antibody (ab121244)

Immunohistochemical analysis of human cerebral cortex tissue labeling rpl35 with ab121244. The data shows moderate cytoplasmic positivity in neurons.



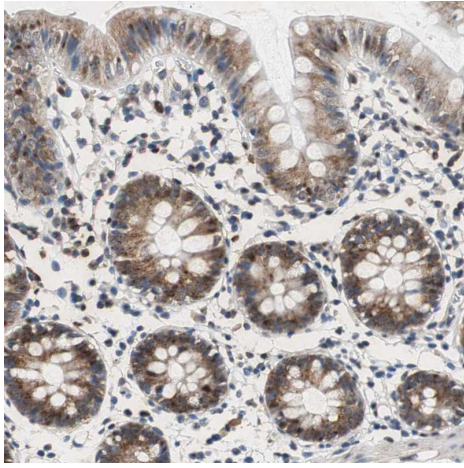
Immunohistochemistry (Formalin/PFA-fixed paraffin-embedded sections) - Anti-RPL35 antibody (ab121244)

Immunohistochemistry (Formalin/PFA-fixed paraffin-embedded sections) analysis of human pancreas tissue labelling RPL35 with ab121244 at 1/50 dilution. Heat mediated antigen retrieval performed with citrate buffer pH 6 before commencing with IHC staining protocol.



Immunohistochemistry (Formalin/PFA-fixed paraffin-embedded sections) - Anti-RPL35 antibody (ab121244)

Immunohistochemical analysis of human skin tissue labeling rpl35 with ab121244. The data shows weak staining in squamous epithelial cells.



Immunohistochemical analysis of human cerebral colon labeling rpl35 with ab121244. The data shows moderate cytoplasmic positivity in glandular cells.

Immunohistochemistry (Formalin/PFA-fixed paraffin-embedded sections) - Anti-RPL35 antibody (ab121244)

Please note: All products are "FOR RESEARCH USE ONLY. NOT FOR USE IN DIAGNOSTIC PROCEDURES"

Our Abpromise to you: Quality guaranteed and expert technical support

- Replacement or refund for products not performing as stated on the datasheet
- Valid for 12 months from date of delivery
- Response to your inquiry within 24 hours
- We provide support in Chinese, English, French, German, Japanese and Spanish
- Extensive multi-media technical resources to help you
- We investigate all quality concerns to ensure our products perform to the highest standards

If the product does not perform as described on this datasheet, we will offer a refund or replacement. For full details of the Abpromise, please visit <https://www.abcam.cn/abpromise> or contact our technical team.

Terms and conditions

- Guarantee only valid for products bought direct from Abcam or one of our authorized distributors