


Anti-RPL26 antibody ab59567

★★★★☆ [3 Abreviews](#) [27 References](#) [2 图像](#)

概述

产品名称	Anti-RPL26抗体
描述	兔多克隆抗体to RPL26
宿主	Rabbit
经测试应用	适用于: ICC/IF, WB
种属反应性	与反应: Mouse, Rat, Human 预测可用于: Cow, Xenopus laevis, Cynomolgus monkey 
免疫原	Synthetic peptide corresponding to Human RPL26 aa 1-17 (N terminal) conjugated to keyhole limpet haemocyanin (Cysteine residue). Sequence: MKFNPFVTSDRSKNRKR

 [Run BLAST with](#)

 [Run BLAST with](#)

常规说明

The Life Science industry has been in the grips of a reproducibility crisis for a number of years. Abcam is leading the way in addressing this with our range of recombinant monoclonal antibodies and knockout edited cell lines for gold-standard validation. Please check that this product meets your needs before purchasing.

If you have any questions, special requirements or concerns, please send us an inquiry and/or contact our Support team ahead of purchase. Recommended alternatives for this product can be found below, along with publications, customer reviews and Q&As

性能

形式	Liquid
存放说明	Shipped at 4°C. Store at +4°C short term (1-2 weeks). Upon delivery aliquot. Store at -20°C or -80°C. Avoid freeze / thaw cycle.
存储溶液	pH: 7.40 Preservative: 0.097% Sodium azide Constituent: 0.0268% PBS
纯度	Immunogen affinity purified
克隆	多克隆
同种型	IgG

应用

The Abpromise guarantee

Abpromise™承诺保证使用ab59567于以下的经测试应用

“应用说明”部分 下显示的仅为推荐的起始稀释度;实际最佳的稀释度/浓度应由使用者检定。

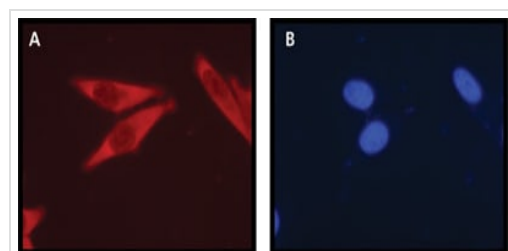
应用	Ab评论	说明
ICC/IF	★☆☆☆☆ (1)	Use a concentration of 5 - 10 µg/ml.
WB	★★★★☆ (2)	Use a concentration of 0.5 - 1 µg/ml. Detects a band of approximately 17 kDa (predicted molecular weight: 17 kDa). Staining of the ribosomal protein L26 band in immunoblotting is specifically inhibited by the immunizing peptide.

靶标

序列相似性

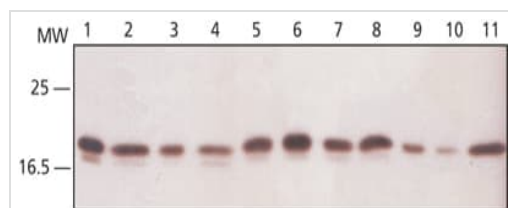
Belongs to the ribosomal protein L24P family.

图片



Immunocytochemistry/ Immunofluorescence - Anti-RPL26 antibody (ab59567)

Cytoplasmic localization of RPL26 in HeLa cells stained with ab59567 at a 5µg/mL concentration (A), and DAPI (B). The antibody was developed with Goat Anti-Rabbit IgG, Cy3 conjugated.



Western blot - Anti-RPL26 antibody (ab59567)

All lanes : Anti-RPL26 antibody (ab59567) at 0.25 µg/ml

Lane 1 : 293T

Lane 2 : HeLa

Lane 3 : U2OS

Lane 4 : MCF7

Lane 5 : K562

Lane 6 : A431

Lane 7 : Jurkat

Lane 8 : HepG2

Lane 9 : NIH3T3

Lane 10 : PC12

Lane 11 : RAT1

Secondary

All lanes : Goat Anti-rabbit IgG, Peroxidase conjugate

Predicted band size: 17 kDa

Observed band size: 17 kDa

Please note: All products are "FOR RESEARCH USE ONLY. NOT FOR USE IN DIAGNOSTIC PROCEDURES"

Our Abpromise to you: Quality guaranteed and expert technical support

- Replacement or refund for products not performing as stated on the datasheet
- Valid for 12 months from date of delivery
- Response to your inquiry within 24 hours
- We provide support in Chinese, English, French, German, Japanese and Spanish
- Extensive multi-media technical resources to help you
- We investigate all quality concerns to ensure our products perform to the highest standards

If the product does not perform as described on this datasheet, we will offer a refund or replacement. For full details of the Abpromise, please visit <https://www.abcam.cn/abpromise> or contact our technical team.

Terms and conditions

- Guarantee only valid for products bought direct from Abcam or one of our authorized distributors