




### Anti-RPL22 antibody ab113714

#### 4 图像

#### 概述

产品名称	Anti-RPL22抗体
描述	山羊多克隆抗体to RPL22
宿主	Goat
经测试应用	适用于: IHC-P
种属反应性	与反应: Human 预测可用于: Mouse, Rat, Chicken, Dog 
免疫原	Synthetic peptide: C-SKESYELRYFQINQ , corresponding to C terminal amino acids 106-119 of Human RPL22  <a href="#">Run BLAST with</a>  <a href="#">Run BLAST with</a>
阳性对照	Human Brain Cortex, Human Testis, Human Thyroid and Human Uterus tissue.
常规说明	<p>The Life Science industry has been in the grips of a reproducibility crisis for a number of years. Abcam is leading the way in addressing this with our range of recombinant monoclonal antibodies and knockout edited cell lines for gold-standard validation. Please check that this product meets your needs before purchasing.</p> <p>If you have any questions, special requirements or concerns, please send us an inquiry and/or contact our Support team ahead of purchase. Recommended alternatives for this product can be found below, along with publications, customer reviews and Q&amp;As</p>

#### 性能

形式	Liquid
存放说明	Shipped at 4°C. Upon delivery aliquot and store at -20°C. Avoid freeze / thaw cycles.
存储溶液	pH: 7.30 Preservative: 0.02% Sodium azide Constituents: 99% Tris buffered saline, 0.5% BSA
纯度	Immunogen affinity purified
克隆	多克隆
同种型	IgG

应用

**The Abpromise guarantee**      **Abpromise™**承诺保证使用ab113714于以下的经测试应用

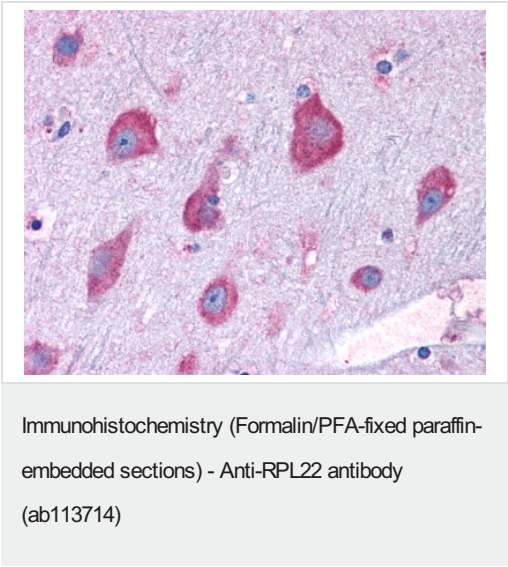
“应用说明”部分 下显示的仅为推荐的起始稀释度;实际最佳的稀释度/浓度应由使用者检定。

应用	Ab评论	说明
IHC-P		Use a concentration of 3.75 µg/ml.

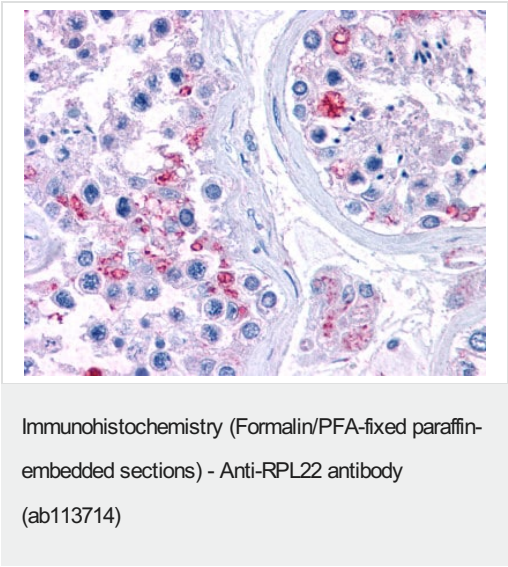
靶标

**序列相似性**      Belongs to the ribosomal protein L22e family.

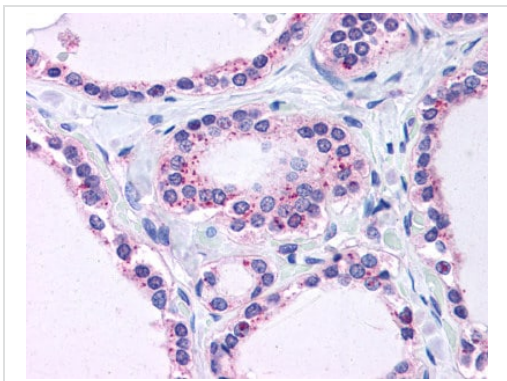
图片



Immunohistochemical staining of Formalin-Fixed, Paraffin-Embedded Human Brain, Cortex using ab113714 at 3.75µg/ml

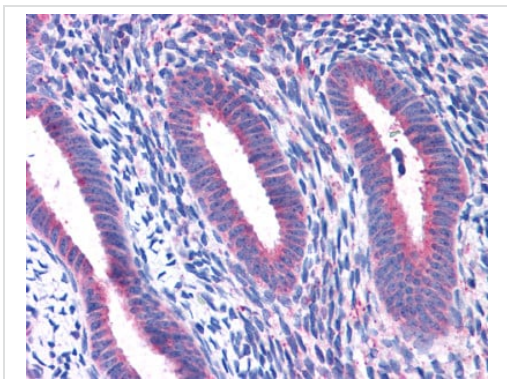


Immunohistochemical staining of Formalin-Fixed, Paraffin-Embedded Human Testis using ab113714 at 3.75µg/ml



Immunohistochemical staining of Formalin-Fixed, Paraffin-Embedded Human Thyroid using ab113714 at 3.75µg/ml

Immunohistochemistry (Formalin/PFA-fixed paraffin-embedded sections) - Anti-RPL22 antibody (ab113714)



Immunohistochemical staining of Formalin-Fixed, Paraffin-Embedded Human Uterus using ab113714 at 3.75µg/ml

Immunohistochemistry (Formalin/PFA-fixed paraffin-embedded sections) - Anti-RPL22 antibody (ab113714)

**Please note:** All products are "FOR RESEARCH USE ONLY. NOT FOR USE IN DIAGNOSTIC PROCEDURES"

### Our Abpromise to you: Quality guaranteed and expert technical support

- Replacement or refund for products not performing as stated on the datasheet
- Valid for 12 months from date of delivery
- Response to your inquiry within 24 hours
- We provide support in Chinese, English, French, German, Japanese and Spanish
- Extensive multi-media technical resources to help you
- We investigate all quality concerns to ensure our products perform to the highest standards

If the product does not perform as described on this datasheet, we will offer a refund or replacement. For full details of the Abpromise, please visit <https://www.abcam.cn/abpromise> or contact our technical team.

## Terms and conditions

---

- Guarantee only valid for products bought direct from Abcam or one of our authorized distributors