


Anti-RPA70 antibody ab12320

6 References 2 图像

概述	
产品名称	Anti-RPA70抗体
描述	兔多克隆抗体to RPA70
宿主	Rabbit
经测试应用	适用于: IHC-P, WB
种属反应性	与反应: Mouse, Human 预测可用于: Rabbit, Chimpanzee, Rhesus monkey, Gorilla, Opossum, Orangutan 
免疫原	Immunogen was a synthetic peptide, which represented a portion of human replication protein A1, 70kDa encoded within exon 12 (LocusLink ID 6117).
常规说明	<p>The Life Science industry has been in the grips of a reproducibility crisis for a number of years. Abcam is leading the way in addressing this with our range of recombinant monoclonal antibodies and knockout edited cell lines for gold-standard validation. Please check that this product meets your needs before purchasing.</p> <p>If you have any questions, special requirements or concerns, please send us an inquiry and/or contact our Support team ahead of purchase. Recommended alternatives for this product can be found below, along with publications, customer reviews and Q&As</p>
性能	
形式	Liquid
存放说明	Shipped at 4°C. Upon delivery aliquot and store at -20°C. Avoid freeze / thaw cycles.
存储溶液	pH: 7 Preservative: 0.1% Sodium azide Constituents: 0.021% PBS, 1.764% Sodium citrate, 1.815% Tris
纯度	Immunogen affinity purified
纯化说明	Purified using the peptide immobilized on solid support.
克隆	多克隆
同种型	IgG
应用	

The Abpromise guarantee **Abpromise™**承诺保证使用ab12320于以下的经测试应用

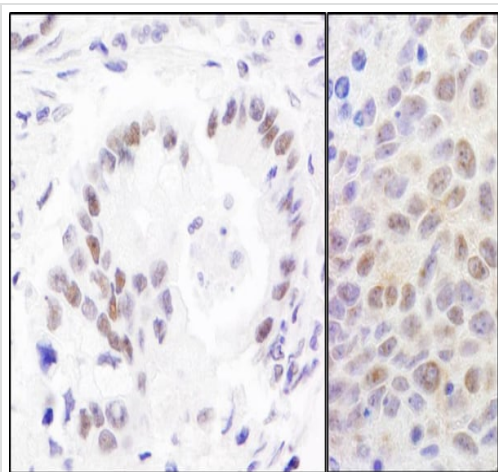
“应用说明”部分 下显示的仅为推荐的起始稀释度;实际最佳的稀释度/浓度应由使用者检定。

应用	Ab评论	说明
IHC-P		1/500 - 1/2000. Perform heat mediated antigen retrieval with Tris/EDTA buffer pH 9.0 before commencing with IHC staining protocol.
WB		1/5000 - 1/25000. Detects a band of approximately 74 kDa (predicted molecular weight: 74 kDa).

靶标

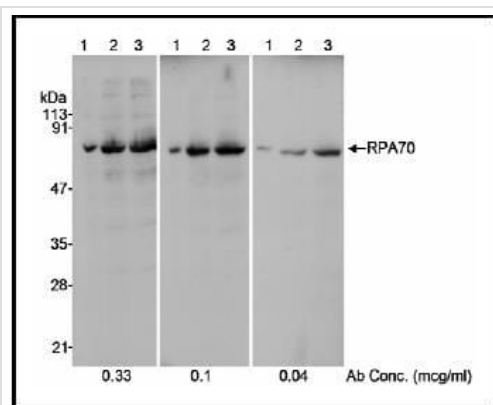
功能	<p>Plays an essential role in several cellular processes in DNA metabolism including replication, recombination and DNA repair. Binds and subsequently stabilizes single-stranded DNA intermediates and thus prevents complementary DNA from reannealing.</p> <p>Functions as component of the alternative replication protein A complex (aRPA). aRPA binds single-stranded DNA and probably plays a role in DNA repair; it does not support chromosomal DNA replication and cell cycle progression through S-phase. In vitro, aRPA cannot promote efficient priming by DNA polymerase alpha but supports DNA polymerase delta synthesis in the presence of PCNA and replication factor C (RFC), the dual incision/excision reaction of nucleotide excision repair and RAD51-dependent strand exchange.</p>
序列相似性	<p>Belongs to the replication factor A protein 1 family.</p>
翻译后修饰	<p>Phosphorylated upon DNA damage, probably by ATM or ATR.</p> <p>Sumoylated on lysine residues Lys-449 and Lys-577, with Lys-449 being the major site.</p> <p>Sumoylation promotes recruitment of RAD51 to the DNA damage foci to initiate DNA repair through homologous recombination. Desumoylated by SENP6.</p>
细胞定位	<p>Nucleus.</p>

图片



Immunohistochemistry (Formalin/PFA-fixed paraffin-embedded sections) - Anti-RPA70 antibody (ab12320)

Immunohistochemistry (Formalin/PFA-fixed paraffin-embedded sections) analysis of human stomach carcinoma (left) and mouse CT26 colon carcinoma (right) tissues labelling RPA70 with ab12320 at 1/1000 (1 µg/ml). Detection: DAB.



Western blot - Anti-RPA70 antibody (ab12320)

Detection of Human RPA70 by Western Blot. Samples: Whole cell lysate (10, 50 and 100 mcg/lane in lanes 1, 2 and 3, respectively) from HeLa cells. Antibody: ab12320 used at the indicated concentrations. Detection: Chemiluminescence with a 10 second exposure.

Detection of Human RPA70 by Western Blot.

Samples: Whole cell lysate (10, 50 and 100 mcg/lane in lanes 1, 2 and 3, respectively) from HeLa cells.

Antibody: ab12320 used at the indicated concentrations.

Detection: Chemiluminescence with a 10 second exposure.

Please note: All products are "FOR RESEARCH USE ONLY. NOT FOR USE IN DIAGNOSTIC PROCEDURES"

Our Abpromise to you: Quality guaranteed and expert technical support

- Replacement or refund for products not performing as stated on the datasheet
- Valid for 12 months from date of delivery
- Response to your inquiry within 24 hours
- We provide support in Chinese, English, French, German, Japanese and Spanish
- Extensive multi-media technical resources to help you
- We investigate all quality concerns to ensure our products perform to the highest standards

If the product does not perform as described on this datasheet, we will offer a refund or replacement. For full details of the Abpromise, please visit <https://www.abcam.cn/abpromise> or contact our technical team.

Terms and conditions

- Guarantee only valid for products bought direct from Abcam or one of our authorized distributors