

Anti-RP105 antibody [MHR73-11] - Low endotoxin, Azide free ab171238

1 图像

概述

产品名称	Anti-RP105抗体[MHR73-11] - Low endotoxin, Azide free
描述	小鼠单克隆抗体[MHR73-11] to RP105 - Low endotoxin, Azide free
宿主	Mouse
经测试应用	适用于: Flow Cyt
种属反应性	与反应: Human
免疫原	The details of the immunogen for this antibody are not available.
阳性对照	Human peripheral blood leukocyte cells.
常规说明	<p>Endotoxin Level: Less than 0.001 ng/μg antibody, as determined by the LAL assay.</p> <p>The Life Science industry has been in the grips of a reproducibility crisis for a number of years. Abcam is leading the way in addressing this with our range of recombinant monoclonal antibodies and knockout edited cell lines for gold-standard validation. Please check that this product meets your needs before purchasing.</p> <p>If you have any questions, special requirements or concerns, please send us an inquiry and/or contact our Support team ahead of purchase. Recommended alternatives for this product can be found below, along with publications, customer reviews and Q&As</p>

性能

形式	Liquid
存放说明	Shipped at 4°C. Store at +4°C short term (1-2 weeks). Upon delivery aliquot. Store at -20°C long term. Avoid freeze / thaw cycle.
存储溶液	pH: 7.20 Constituent: 100% PBS
无载体	是
纯度	Protein G purified
克隆	单克隆
克隆编号	MHR73-11
同种型	IgG1

应用

The Abpromise guarantee

Abpromise™承诺保证使用ab171238于以下的经测试应用

“应用说明”部分 下显示的仅为推荐的起始稀释度;实际最佳的稀释度/浓度应由使用者检定。

应用	Ab评论	说明
Flow Cyt		Use at an assay dependent concentration. ab171238 can be used at less than or equal to 1µg per test. A test is defined as the amount (µg) of antibody that will stain a cell sample in a final volume of 100 µL. Cell number should be determined empirically but can range from 10e5 to 10e8 cells/test. It is recommended that the antibody be carefully titrated for optimal performance in the assay of interest.

靶标

功能

May cooperate with MD-1 and TLR4 to mediate the innate immune response to bacterial lipopolysaccharide (LPS) in B-cells. Leads to NF-kappa-B activation. Also involved in the life/death decision of B-cells.

组织特异性

Expressed mainly on mature peripheral B cells. Detected in spleen, lymph node and appendix. Not detected in pre-B and -T cells.

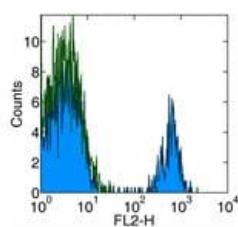
序列相似性

Belongs to the Toll-like receptor family.
Contains 19 LRR (leucine-rich) repeats.
Contains 1 LRRCT domain.

细胞定位

Cell membrane.

图片



Flow cytometry analysis of Human peripheral blood cells (10e5 to 10e8) labeling RP105 with the PE conjugated version of ab171238. Appropriate isotype controls were used (open histogram). Cells in the lymphocyte population were used for analysis.

Flow Cytometry - Anti-RP105 antibody [MHR73-11] -
Low endotoxin, Azide free (ab171238)

Please note: All products are "FOR RESEARCH USE ONLY. NOT FOR USE IN DIAGNOSTIC PROCEDURES"

Our Abpromise to you: Quality guaranteed and expert technical support

- Replacement or refund for products not performing as stated on the datasheet
- Valid for 12 months from date of delivery
- Response to your inquiry within 24 hours

- We provide support in Chinese, English, French, German, Japanese and Spanish
- Extensive multi-media technical resources to help you
- We investigate all quality concerns to ensure our products perform to the highest standards

If the product does not perform as described on this datasheet, we will offer a refund or replacement. For full details of the Abpromise, please visit <https://www.abcam.cn/abpromise> or contact our technical team.

Terms and conditions

- Guarantee only valid for products bought direct from Abcam or one of our authorized distributors