

Anti-Rootletin antibody ab121653

1 [References](#) **6** [图像](#)

概述

产品名称	Anti-Rootletin抗体
描述	兔多克隆抗体to Rootletin
宿主	Rabbit
经测试应用	适用于: WB, IHC-P, ICC
种属反应性	与反应: Human
免疫原	Recombinant fragment corresponding to Human Rootletin aa 406-483. Sequence: VKRLEKQNLEKDQVNKDLTEKLEALESRLQEQALETEDGE GLQQTLRD LAQAVLSDSESGVQLSGSERTADASNGS Run BLAST with Run BLAST with
阳性对照	IHC-P: Human fallopian tube, bronchus, liver, cerebral cortex and testis tissue; ICC: U2OS cells; WB: SCLC-21H.
常规说明	<p>The Life Science industry has been in the grips of a reproducibility crisis for a number of years. Abcam is leading the way in addressing this with our range of recombinant monoclonal antibodies and knockout edited cell lines for gold-standard validation. Please check that this product meets your needs before purchasing.</p> <p>If you have any questions, special requirements or concerns, please send us an inquiry and/or contact our Support team ahead of purchase. Recommended alternatives for this product can be found below, along with publications, customer reviews and Q&As</p>

性能

形式	Liquid
存放说明	Shipped at 4°C. Upon delivery aliquot and store at -20°C. Avoid freeze / thaw cycles.
存储溶液	pH: 7.20 Preservative: 0.02% Sodium azide Constituents: 59% PBS, 40% Glycerol (glycerin, glycerine)
纯度	Immunogen affinity purified
克隆	多克隆
同种型	IgG

应用

The Abpromise guarantee

Abpromise™承诺保证使用ab121653于以下的经测试应用

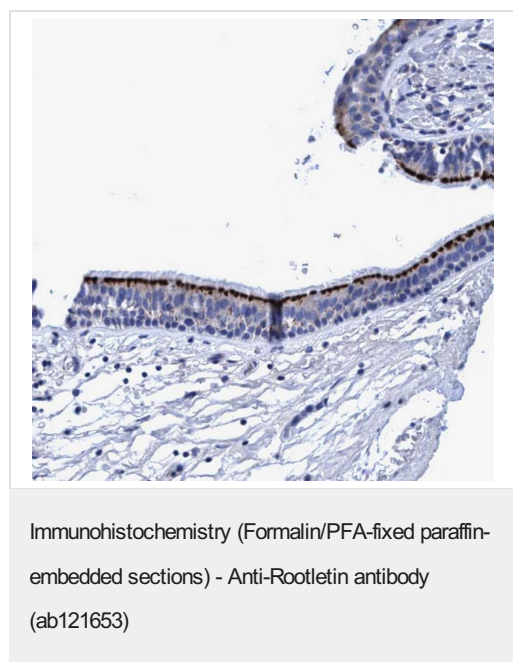
“应用说明”部分 下显示的仅为推荐的起始稀释度;实际最佳的稀释度/浓度应由使用者检定。

应用	Ab评论	说明
WB		Use a concentration of 0.04 - 0.4 µg/ml. Predicted molecular weight: 229 kDa.
IHC-P		1/50 - 1/200. Perform heat mediated antigen retrieval with citrate buffer pH 6 before commencing with IHC staining protocol. Use buffer at pH 6 for antigen retrieval.
ICC		Use a concentration of 0.25 - 2 µg/ml.

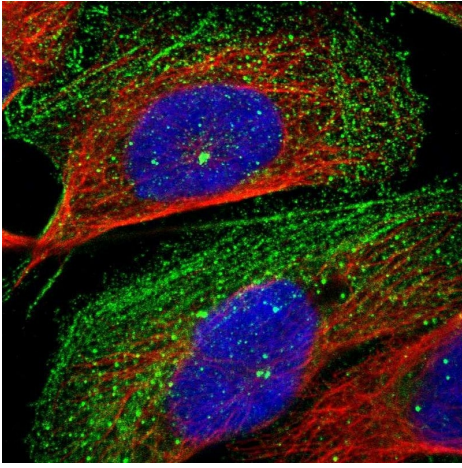
靶标

功能	Major structural component of the ciliary rootlet, a cytoskeletal-like structure in ciliated cells which originates from the basal body at the proximal end of a cilium and extends proximally toward the cell nucleus. Contributes to centrosome cohesion before mitosis.
序列相似性	Belongs to the rootletin family.
翻译后修饰	Phosphorylated by NEK2 which may regulate its association with centrosomes. Phosphorylated upon DNA damage, probably by ATM or ATR.
细胞定位	Cytoplasm > cytoskeleton > centrosome > centriole. In ciliated cells, associated with ciliary rootlets. In non-ciliated cells, localized between, around and at the proximal ends of the centrioles. Dissociates from the centrioles at the onset of mitosis and reassociates with them at anaphase.

图片

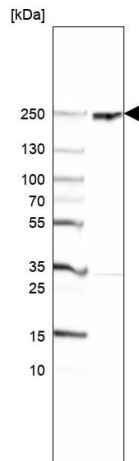


Immunohistochemistry (Formalin/PFA-fixed paraffin-embedded sections) analysis of human bronchus tissue labelling Rootletin with ab121653 at 1/50 dilution. Heat mediated antigen retrieval performed with citrate buffer pH 6 before commencing with IHC staining protocol.



Immunocytochemistry - Anti-Rootletin antibody
(ab121653)

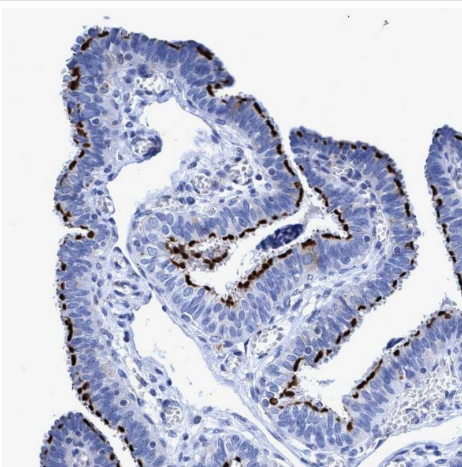
Immunocytochemistry analysis of U-2 OS (human bone osteosarcoma epithelial cell line) cells labelling Rootletin with ab121653 at 2 $\mu\text{g/mL}$.



Western blot - Anti-Rootletin antibody (ab121653)

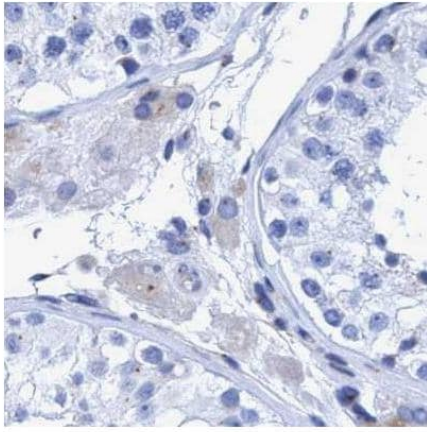
Anti-Rootletin antibody (ab121653) at 0.4 $\mu\text{g/ml}$ + SCLC-21H (human small cell lung carcinoma cell line) cell lysate

Predicted band size: 229 kDa



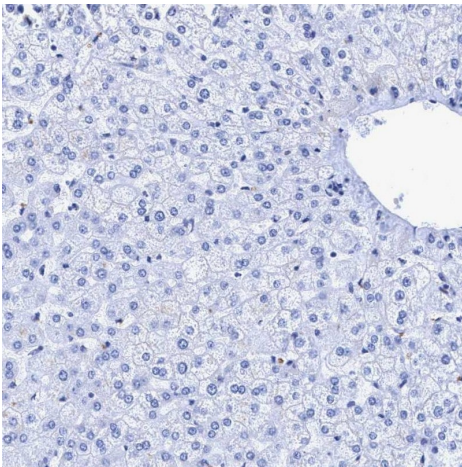
Immunohistochemistry (Formalin/PFA-fixed paraffin-embedded sections) - Anti-Rootletin antibody
(ab121653)

ab121653, at 1/150 dilution, staining Rootletin in Human fallopian tube tissue by Immunohistochemistry using formalin-fixed, paraffin-embedded tissue.



Immunohistochemical analysis of human testis tissue labeling
Rootletin with ab121653 at 1/50 dilution.

Immunohistochemistry (Formalin/PFA-fixed paraffin-
embedded sections) - Anti-Rootletin antibody
(ab121653)



Immunohistochemical analysis of human liver tissue labeling
Rootletin with ab121653 at 1/50 dilution.

Immunohistochemistry (Formalin/PFA-fixed paraffin-
embedded sections) - Anti-Rootletin antibody
(ab121653)

Please note: All products are "FOR RESEARCH USE ONLY. NOT FOR USE IN DIAGNOSTIC PROCEDURES"

Our Abpromise to you: Quality guaranteed and expert technical support

- Replacement or refund for products not performing as stated on the datasheet
- Valid for 12 months from date of delivery
- Response to your inquiry within 24 hours
- We provide support in Chinese, English, French, German, Japanese and Spanish
- Extensive multi-media technical resources to help you
- We investigate all quality concerns to ensure our products perform to the highest standards

If the product does not perform as described on this datasheet, we will offer a refund or replacement. For full details of the Abpromise,

please visit <https://www.abcam.cn/abpromise> or contact our technical team.

Terms and conditions

- Guarantee only valid for products bought direct from Abcam or one of our authorized distributors