

# Anti-ROCK1 (phospho T455 + S456) antibody ab203273

★★★★★ [1 Abreviews](#) [9 References](#) [2 图像](#)

### 概述

产品名称	Anti-ROCK1 (phospho T455 + S456)抗体
描述	兔多克隆抗体to ROCK1 (phospho T455 + S456)
宿主	Rabbit
经测试应用	适用于: IHC-P
种属反应性	与反应: Rat, Human
免疫原	Synthetic peptide within Human ROCK1 aa 400-500 (phospho T455 + S456) conjugated to keyhole limpet haemocyanin. The exact immunogen sequence used to generate this antibody is proprietary information. If additional detail on the immunogen is needed to determine the suitability of the antibody for your needs, please <b><a href="#">contact</a></b> our Scientific Support team to discuss your requirements. Database link: <a href="#">Q13464</a>

 [Run BLAST with](#)

 [Run BLAST with](#)

### 常规说明

The Life Science industry has been in the grips of a reproducibility crisis for a number of years. Abcam is leading the way in addressing this with our range of recombinant monoclonal antibodies and knockout edited cell lines for gold-standard validation. Please check that this product meets your needs before purchasing.

If you have any questions, special requirements or concerns, please send us an inquiry and/or contact our Support team ahead of purchase. Recommended alternatives for this product can be found below, along with publications, customer reviews and Q&As

### 性能

形式	Liquid
存放说明	Shipped at 4°C. Store at +4°C short term (1-2 weeks). Upon delivery aliquot. Store at -20°C long term. Avoid freeze / thaw cycle.
存储溶液	pH: 7.40 Preservative: 0.02% Proclin 300 Constituents: 50% Glycerol (glycerin, glycerine), 1% BSA, 48.98% TBS, 1X
纯度	Protein A purified
克隆	多克隆
同种型	IgG

## 应用

### The Abpromise guarantee

**Abpromise™** 承诺保证使用ab203273于以下的经测试应用

“应用说明”部分 下显示的仅为推荐的起始稀释度;实际最佳的稀释度/浓度应由使用者检定。

应用	Ab评论	说明
IHC-P		1/100 - 1/500. When using a fluorescent probe the recommended dilution is 1/50 – 1/200

## 靶标

### 功能

Protein kinase which is a key regulator of actin cytoskeleton and cell polarity. Involved in regulation of smooth muscle contraction, actin cytoskeleton organization, stress fiber and focal adhesion formation, neurite retraction, cell adhesion and motility via phosphorylation of DAPK3, GFAP, LIMK1, LIMK2, MYL9/MLC2, PFN1 and PPP1R12A. Phosphorylates FHOD1 and acts synergistically with it to promote SRC-dependent non-apoptotic plasma membrane blebbing. Phosphorylates JIP3 and regulates the recruitment of JNK to JIP3 upon UVB-induced stress. Acts as a suppressor of inflammatory cell migration by regulating PTEN phosphorylation and stability. Acts as a negative regulator of VEGF-induced angiogenic endothelial cell activation. Required for centrosome positioning and centrosome-dependent exit from mitosis. Plays a role in terminal erythroid differentiation. May regulate closure of the eyelids and ventral body wall by inducing the assembly of actomyosin bundles. Promotes keratinocyte terminal differentiation. Involved in osteoblast compaction through the fibronectin fibrillogenesis cell-mediated matrix assembly process, essential for osteoblast mineralization.

### 组织特异性

Detected in blood platelets.

### 序列相似性

Belongs to the protein kinase superfamily. AGC Ser/Thr protein kinase family.  
Contains 1 AGC-kinase C-terminal domain.  
Contains 1 PH domain.  
Contains 1 phorbol-ester/DAG-type zinc finger.  
Contains 1 protein kinase domain.  
Contains 1 REM (Hr1) repeat.

### 结构域

The C-terminal auto-inhibitory domain interferes with kinase activity. RHOA binding leads to a conformation change and activation of the kinase. Truncated ROCK1 is constitutively activated.

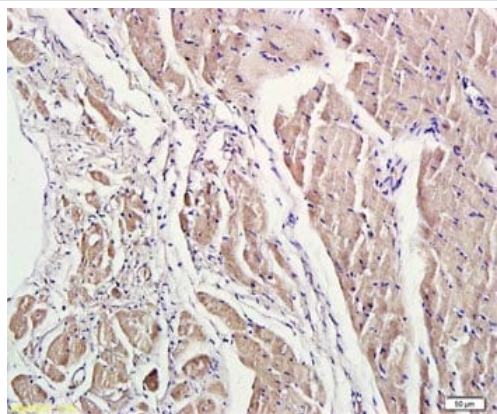
### 翻译后修饰

Autophosphorylated on serine and threonine residues.  
Cleaved by caspase-3 during apoptosis. This leads to constitutive activation of the kinase and membrane blebbing.

### 细胞定位

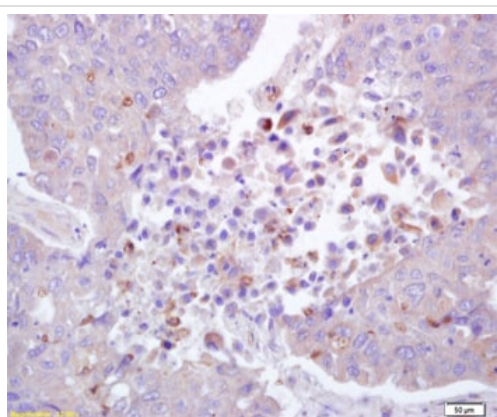
Cytoplasm. Cytoplasm, cytoskeleton, microtubule organizing center, centrosome, centriole. Golgi apparatus membrane. Cell projection, bleb. Cytoplasm, cytoskeleton. Cell membrane. Cell projection, lamellipodium. Cell projection, ruffle. Associated with the mother centriole and an intercentriolar linker. Colocalizes with ITGB1BP1 and ITGB1 at the cell membrane predominantly in lamellipodia and membrane ruffles, but also in retraction fibers. Localizes at the cell membrane in an ITGB1BP1-dependent manner (By similarity). A small proportion is associated with Golgi membranes.

## 图片



Immunohistochemistry (Formalin/PFA-fixed paraffin-embedded sections) - Anti-ROCK1 (phospho T455 + S456) antibody (ab203273)

Immunohistochemical analysis of formalin-fixed and paraffin-embedded rat heart tissue labeling ROCK1 with ab203273 at 1/200 dilution followed by conjugation to the secondary antibody and DAB staining.



Immunohistochemistry (Formalin/PFA-fixed paraffin-embedded sections) - Anti-ROCK1 (phospho T455 + S456) antibody (ab203273)

Immunohistochemical analysis of formalin-fixed and paraffin-embedded human lung carcinoma tissue labeling ROCK1 with ab203273 at 1/200 dilution followed by conjugation to the secondary antibody and DAB staining.

**Please note:** All products are "FOR RESEARCH USE ONLY. NOT FOR USE IN DIAGNOSTIC PROCEDURES"

### Our Abpromise to you: Quality guaranteed and expert technical support

- Replacement or refund for products not performing as stated on the datasheet
- Valid for 12 months from date of delivery
- Response to your inquiry within 24 hours
- We provide support in Chinese, English, French, German, Japanese and Spanish
- Extensive multi-media technical resources to help you
- We investigate all quality concerns to ensure our products perform to the highest standards

If the product does not perform as described on this datasheet, we will offer a refund or replacement. For full details of the Abpromise, please visit <https://www.abcam.cn/abpromise> or contact our technical team.

## Terms and conditions

---

- Guarantee only valid for products bought direct from Abcam or one of our authorized distributors