

# Anti-RNF31/HOIP antibody ab46322

★★★★★ [5 Abreviews](#) [20 References](#) [3 图像](#)

### 概述

|       |   |
|-------|---|
| 产品名称  | Anti-RNF31/HOIP抗体   |
| 描述    | 兔多克隆抗体to RNF31/HOIP   |
| 宿主    | Rabbit  |
| 特异性   | Replenishment batches of ab46322 are tested in WB. Previous batches were additionally validated in ICC/IF. This application is still expected to work and is covered by our Abpromise guarantee.  |
| 经测试应用 | 适用于: ICC/IF, WB   |
| 种属反应性 | 与反应: Human<br>预测可用于: Mouse   |
| 免疫原   | Synthetic peptide. This information is proprietary to Abcam and/or its suppliers.   |
| 常规说明  | <p>The Life Science industry has been in the grips of a reproducibility crisis for a number of years. Abcam is leading the way in addressing this with our range of recombinant monoclonal antibodies and knockout edited cell lines for gold-standard validation. Please check that this product meets your needs before purchasing.</p> <p>If you have any questions, special requirements or concerns, please send us an inquiry and/or contact our Support team ahead of purchase. Recommended alternatives for this product can be found below, along with publications, customer reviews and Q&amp;As</p> |

### 性能

|      |   |
|------|---|
| 形式   | Liquid  |
| 存放说明 | Shipped at 4°C. Store at +4°C short term (1-2 weeks). Upon delivery aliquot. Store at -20°C or -80°C. Avoid freeze / thaw cycle.  |
| 存储溶液 | pH: 7.40<br>Preservative: 0.02% Sodium azide<br>Constituent: PBS  |
| 纯度   | Batches of this product that have a concentration < 1mg/ml may have BSA added as a stabilising agent. If you would like information about the formulation of a specific lot, please contact our scientific support team who will be happy to help.<br>Immunogen affinity purified |

克隆 多克隆  
同种型 IgG

## 应用

**The Abpromise guarantee** **Abpromise™**承诺保证使用ab46322于以下的经测试应用

“应用说明”部分 下显示的仅为推荐的起始稀释度;实际最佳的稀释度/浓度应由使用者检定。

| 应用     | Ab评论      | 说明 |
|--------|-----------|----|
| ICC/IF |           |    |
| WB     | ★★★★☆ (5) |    |

## 应用说明

ChIP: Use at an assay dependent dilution (PMID 19237537).  
ICC/IF: Use at a concentration of 1 µg/ml.  
WB: 1/250. Detects a band of approximately 116 kDa (predicted molecular weight: 119 kDa).

Not yet tested in other applications.  
Optimal dilutions/concentrations should be determined by the end user.

## 靶标

### 功能

E3 ubiquitin-protein ligase component of the LUBAC complex which conjugates linear polyubiquitin chains in a head-to-tail manner to substrates and plays a key role in NF-kappa-B activation and regulation of inflammation. LUBAC conjugates linear polyubiquitin to IKBKG and RIPK1 and is involved in activation of the canonical NF-kappa-B and the JNK signaling pathways. Linear ubiquitination mediated by the LUBAC complex interferes with TNF-induced cell death and thereby prevents inflammation. LUBAC is proposed to be recruited to the TNF-R1 signaling complex (TNF-RSC) following polyubiquitination of TNF-RSC components by BIRC2 and/or BIRC3 and to conjugate linear polyubiquitin to IKBKG and possibly other components contributing to the stability of the complex. Binds polyubiquitin of different linkage types.

### 组织特异性

Expressed in both normal and transformed breast epithelial cell lines.

### 序列相似性

Contains 2 IBR-type zinc fingers.  
Contains 3 RanBP2-type zinc fingers.  
Contains 1 RING-type zinc finger.  
Contains 1 UBA domain.

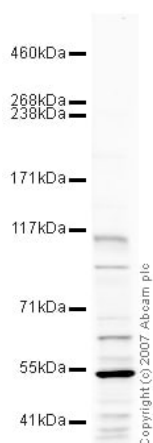
### 结构域

The RanBP2-type zinc fingers mediate the specific interaction with ubiquitin.

### 细胞定位

Cytoplasm.

## 图片



Western blot - Anti-RNF31/HOIP antibody (ab46322)

Anti-RNF31/HOIP antibody (ab46322) at 1/250 dilution + Jurkat (Human T cell lymphoblast-like cell line) Whole Cell Lysate at 10 µg

### Secondary

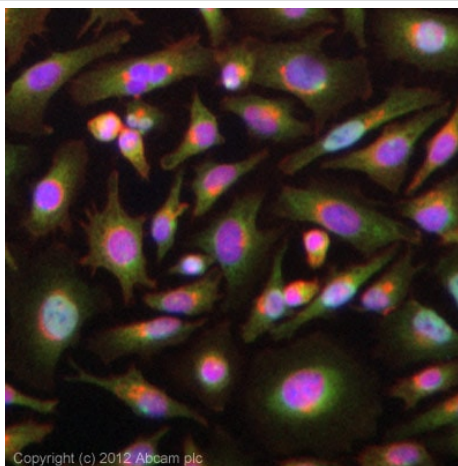
IRDye 680 Conjugated Goat Anti-Rabbit IgG (H+L) at 1/10000 dilution

Performed under reducing conditions.

**Predicted band size:** 119 kDa

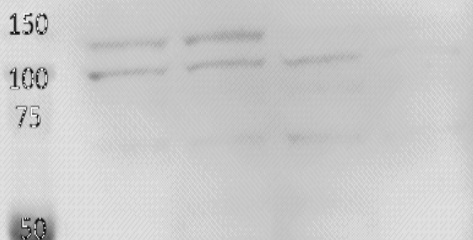
**Observed band size:** 116 kDa

**Additional bands at:** 105 kDa (possible isoform), 50 kDa (possible isoform), 60 kDa. We are unsure as to the identity of these extra bands.



Immunocytochemistry/ Immunofluorescence - Anti-RNF31/HOIP antibody (ab46322)

ICC/IF image of ab46322 stained HeLa cells. The cells were 4% formaldehyde fixed (10 min) and then incubated in 1%BSA / 10% normal goat serum / 0.3M glycine in 0.1% PBS-Tween for 1h to permeabilise the cells and block non-specific protein-protein interactions. The cells were then incubated with the antibody (ab46322, 5µg/ml) overnight at +4°C. The secondary antibody (green) was [ab96899](#), DyLight® 488 goat anti-rabbit IgG (H+L) used at a 1/250 dilution for 1h. Alexa Fluor® 594 WGA was used to label plasma membranes (red) at a 1/200 dilution for 1h. DAPI was used to stain the cell nuclei (blue) at a concentration of 1.43µM. This antibody also gave a positive result in 4% formaldehyde fixed (10 min) Hek293 cells at 5µg/ml.



Western blot - Anti-RNF31/HOIP antibody (ab46322)

This image is courtesy of an anonymous Abreview

Western blot analysis of A549 cell lysate (100µg/lane) RNF31/HOIP with ab46322 at 1/1000. A HRP-conjugated Goat anti-rabbit polyclonal (1/10000) was used as the secondary antibody.

lane 1-2 : siCT A549

lane 3-4 : siHOIP A549

**Please note:** All products are "FOR RESEARCH USE ONLY. NOT FOR USE IN DIAGNOSTIC PROCEDURES"

### **Our Abpromise to you: Quality guaranteed and expert technical support**

---

- Replacement or refund for products not performing as stated on the datasheet
- Valid for 12 months from date of delivery
- Response to your inquiry within 24 hours
  
- We provide support in Chinese, English, French, German, Japanese and Spanish
- Extensive multi-media technical resources to help you
- We investigate all quality concerns to ensure our products perform to the highest standards

If the product does not perform as described on this datasheet, we will offer a refund or replacement. For full details of the Abpromise, please visit <https://www.abcam.cn/abpromise> or contact our technical team.

### **Terms and conditions**

---

- Guarantee only valid for products bought direct from Abcam or one of our authorized distributors