

Anti-RLTPR antibody ab122717

★★★★☆ **3 Abreviews** **5 References** **1 图像**

概述

产品名称	Anti-RLTPR抗体
描述	兔多克隆抗体to RLTPR
宿主	Rabbit
经测试应用	适用于: IHC-P
种属反应性	与反应: Human
免疫原	antigen sequence: EVNELCQSVQ EHVELLGCGA GPQGEAAVRQ AEDAIQNANF SLSILPILYE AGSSPSHHWQ LGQKLEGLLR QVGEVCRQDI QDFTQ, corresponding to amino acids 729-813 of Human RLTPR.

 [Run BLAST with ExPASy](#)  [Run BLAST with NCBI](#)

阳性对照 Human rectum tissue

常规说明

ab122717 is mono-specific.

The Life Science industry has been in the grips of a reproducibility crisis for a number of years. Abcam is leading the way in addressing this with our range of recombinant monoclonal antibodies and knockout edited cell lines for gold-standard validation. Please check that this product meets your needs before purchasing.

If you have any questions, special requirements or concerns, please send us an inquiry and/or contact our Support team ahead of purchase. Recommended alternatives for this product can be found below, along with publications, customer reviews and Q&As

性能

形式	Liquid
存放说明	Shipped at 4°C. Upon delivery aliquot and store at -20°C. Avoid freeze / thaw cycles.
存储溶液	pH: 7.20 Preservative: 0.02% Sodium azide Constituents: 40% Glycerol (glycerin, glycerine), 59% PBS
纯度	Immunogen affinity purified
Primary antibody说明	ab122717 is mono-specific.
克隆	多克隆

同种型

IgG

应用

The Abpromise guarantee

Abpromise™ 承诺保证使用 ab122717 于以下的经测试应用

“应用说明”部分 下显示的仅为推荐的起始稀释度；实际最佳的稀释度/浓度应由使用者检定。

应用	Ab 评论	说明
IHC-P		1/50 - 1/200. Perform heat mediated antigen retrieval with citrate buffer pH 6 before commencing with IHC staining protocol.

靶标

组织特异性

Expressed in all tissues tested, including thymus, spleen, colon, leukocytes, peripheral blood, skin, skin keratinocytes and skin fibroblasts.

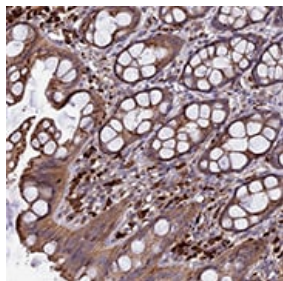
序列相似性

Belongs to the CARMIL family.
Contains 16 LRR (leucine-rich) repeats.

发展阶段

Expressed in fetal skin.

图片



ab122717, at 1/50 dilution, staining RLTPR in paraffin-embedded Human rectum tissue by Immunohistochemistry.

Immunohistochemistry (Formalin/PFA-fixed paraffin-embedded sections) - Anti-RLTPR antibody (ab122717)

Please note: All products are "FOR RESEARCH USE ONLY. NOT FOR USE IN DIAGNOSTIC PROCEDURES"

Our Abpromise to you: Quality guaranteed and expert technical support

- Replacement or refund for products not performing as stated on the datasheet
- Valid for 12 months from date of delivery
- Response to your inquiry within 24 hours
- We provide support in Chinese, English, French, German, Japanese and Spanish
- Extensive multi-media technical resources to help you

- We investigate all quality concerns to ensure our products perform to the highest standards

If the product does not perform as described on this datasheet, we will offer a refund or replacement. For full details of the Abpromise, please visit <https://www.abcam.cn/abpromise> or contact our technical team.

Terms and conditions

- Guarantee only valid for products bought direct from Abcam or one of our authorized distributors