

Anti-RIP3 (phospho T231 + S232) antibody [2D7] ab205421

1 [Abreviews](#) **14** [References](#) **2** [图像](#)

概述

产品名称	Anti-RIP3 (phospho T231 + S232)抗体[2D7]
描述	小鼠单克隆抗体[2D7] to RIP3 (phospho T231 + S232)
宿主	Mouse
经测试应用	适用于: ELISA, WB
种属反应性	与反应: Mouse
免疫原	Synthetic peptide corresponding to Mouse RIP3 (phospho T231 + S232).
阳性对照	WB: Mouse pancreas, kidney and small intestine tissue lysate.
常规说明	<p>This antibody clone is manufactured by Abcam. If you require a custom buffer formulation or conjugation for your experiments, please contact orders@abcam.com.</p> <p>The Life Science industry has been in the grips of a reproducibility crisis for a number of years. Abcam is leading the way in addressing this with our range of recombinant monoclonal antibodies and knockout edited cell lines for gold-standard validation. Please check that this product meets your needs before purchasing.</p> <p>If you have any questions, special requirements or concerns, please send us an inquiry and/or contact our Support team ahead of purchase. Recommended alternatives for this product can be found below, along with publications, customer reviews and Q&As</p>

性能

形式	Liquid
存放说明	Shipped at 4°C. Store at +4°C short term (1-2 weeks). Upon delivery aliquot. Store at -20°C. Avoid freeze / thaw cycle.
存储溶液	<p>pH: 7.40</p> <p>Preservative: 0.02% Sodium azide</p> <p>Constituents: PBS, 6.97% L-Arginine</p>
纯度	Protein G purified
克隆	单克隆
克隆编号	2D7
同种型	IgG1

应用

The Abpromise guarantee **Abpromise™**承诺保证使用ab205421于以下的经测试应用

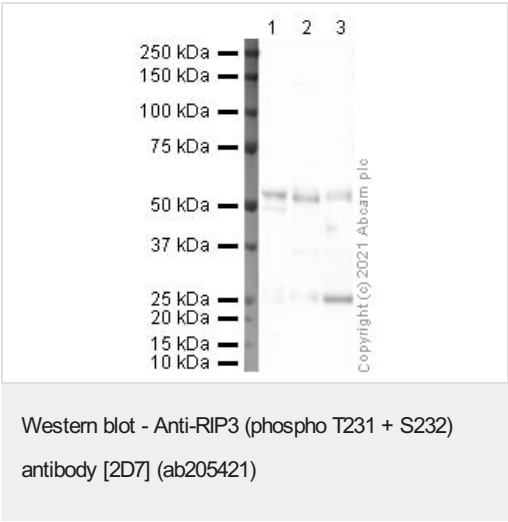
“应用说明”部分 下显示的仅为推荐的起始稀释度;实际最佳的稀释度/浓度应由使用者检定。

应用	Ab评论	说明
ELISA		Use at an assay dependent concentration.
WB		Use a concentration of 1 - 5 µg/ml. Detects a band of approximately 57 kDa (predicted molecular weight: 57 kDa).

靶标

功能	Promotes apoptosis.
组织特异性	Detected at lower levels in heart, placenta, lung and kidney. Isoform 3 is significantly increased in colon and lung cancers.
序列相似性	Belongs to the protein kinase superfamily. TKL Ser/Thr protein kinase family. Contains 1 protein kinase domain.
翻译后修饰	Autophosphorylated.
细胞定位	Cytoplasm.

图片



All lanes : Anti-RIP3 (phospho T231 + S232) antibody [2D7] (ab205421) at 1 µg/ml

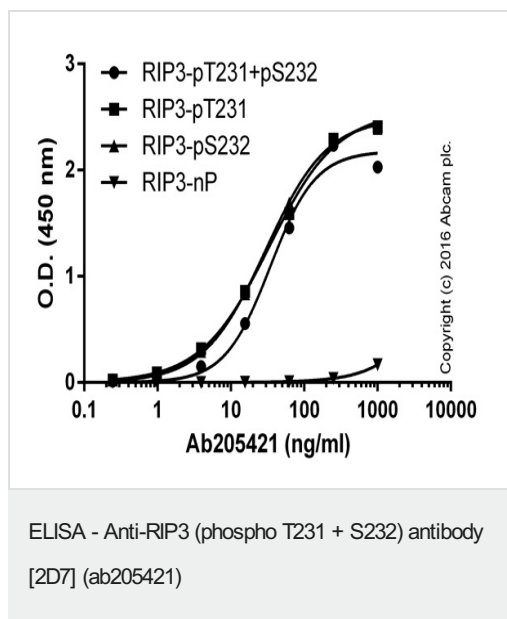
- Lane 1 :** Mouse Pancreas Tissue Lysate at 10 µg
- Lane 2 :** Mouse Kidney Tissue Lysate at 20 µg
- Lane 3 :** Mouse Small Intestine Tissue Lysate at 20 µg

Secondary
All lanes : Goat polyclonal to Mouse IgG - H&L - Pre-Adsorbed (HRP) at 1/5000 dilution

Predicted band size: 57 kDa
Observed band size: 57 kDa

Exposure time: 4 minutes

Blocking buffer: 2% BSA.
Performed under reducing conditions.



Serially diluted ab205421 was bound to immobilised RIP3 phospho peptide (T231), RIP3 phospho peptide (S232), RIP3 dual phospho peptide (T231+S232) or RIP3 control peptide (RIP3-nP; all peptides at 1 microgram x mL⁻¹). The antibody was detected by HRP-labeled goat anti-mouse IgG and signal was developed with TMB substrate.

Please note: All products are "FOR RESEARCH USE ONLY. NOT FOR USE IN DIAGNOSTIC PROCEDURES"

Our Abpromise to you: Quality guaranteed and expert technical support

- Replacement or refund for products not performing as stated on the datasheet
- Valid for 12 months from date of delivery
- Response to your inquiry within 24 hours
- We provide support in Chinese, English, French, German, Japanese and Spanish
- Extensive multi-media technical resources to help you
- We investigate all quality concerns to ensure our products perform to the highest standards

If the product does not perform as described on this datasheet, we will offer a refund or replacement. For full details of the Abpromise, please visit <https://www.abcam.cn/abpromise> or contact our technical team.

Terms and conditions

- Guarantee only valid for products bought direct from Abcam or one of our authorized distributors