

# Anti-RIP3 (phospho S232) antibody [EPR9516(N)-25] ab195117

**重组** RabMAb

★★★★☆ **13 Abreviews** **58 References** **5 图像**

### 概述

产品名称	Anti-RIP3 (phospho S232)抗体[EPR9516(N)-25]
描述	兔单克隆抗体[EPR9516(N)-25] to RIP3 (phospho S232)
宿主	Rabbit
经测试应用	<b>适用于:</b> ELISA, WB, Dot blot <b>不适用于:</b> IHC-P or IP
种属反应性	<b>与反应:</b> Mouse
免疫原	Synthetic peptide. This information is proprietary to Abcam and/or its suppliers.
阳性对照	WB: L-929 whole cell lysate treated with 20 ng/ml TNF alpha, 100 nM Smac mimetic, and 20 µM z-VAD for 8 h and then harvested; Untreated L-929 whole cell lysate; TSE (WT) whole cell lysate treated with 20 ng/ml TNF alpha, 100 nM Smac mimetic, and 20 µM z-VAD for 12 h and then harvested; TSE (KO MLKL) whole cell lysate treated with 20 ng/ml TNF alpha, 100 nM Smac mimetic, and 20 µM z-VAD for 12 h and then harvested.
常规说明	<p>This product is a recombinant monoclonal antibody, which offers several advantages including:</p> <ul style="list-style-type: none"> <li>- High batch-to-batch consistency and reproducibility</li> <li>- Improved sensitivity and specificity</li> <li>- Long-term security of supply</li> <li>- Animal-free production</li> </ul> <p>For more information <a href="#">see here</a>.</p> <p>Our RabMAb<sup>®</sup> technology is a patented hybridoma-based technology for making rabbit monoclonal antibodies. For details on our patents, please refer to <a href="#">RabMAb<sup>®</sup> patents</a>.</p>

### 性能

形式	Liquid
存放说明	Shipped at 4°C. Store at +4°C short term (1-2 weeks). Upon delivery aliquot. Store at -20°C long term. Avoid freeze / thaw cycle.
存储溶液	pH: 7.2 Preservative: 0.01% Sodium azide Constituents: 59% PBS, 40% Glycerol, 0.05% BSA
纯度	Protein A purified

克隆	单克隆
克隆编号	EPR9516(N)-25
同种型	IgG

应用

The Abpromise guarantee

Abpromise™承诺保证使用ab195117于以下的经测试应用

“应用说明”部分 下显示的仅为推荐的起始稀释度;实际最佳的稀释度/浓度应由使用者检定。

应用	Ab评论	说明
ELISA	★★★★★ (1)	Use at an assay dependent concentration.
WB	★★★★★ (8)	1/1000. Detects a band of approximately 53 kDa (predicted molecular weight: 53 kDa).
Dot blot		Use at an assay dependent concentration.

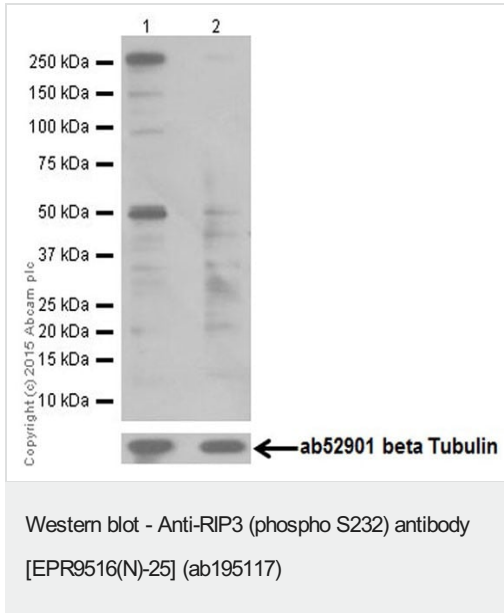
应用说明

Is unsuitable for IHC-P or IP.

靶标

功能	Promotes apoptosis.
组织特异性	Detected at lower levels in heart, placenta, lung and kidney. Isoform 3 is significantly increased in colon and lung cancers.
序列相似性	Belongs to the protein kinase superfamily. TKL Ser/Thr protein kinase family. Contains 1 protein kinase domain.
翻译后修饰	Autophosphorylated.
细胞定位	Cytoplasm.

图片



**All lanes :** Anti-RIP3 (phospho S232) antibody [EPR9516(N)-25] (ab195117) at 1/10000 dilution

**Lane 1 :** Untreated L-929 (Mouse connective tissue fibroblast cell line) whole cell lysate

**Lane 2 :** L-929 (Mouse connective tissue fibroblast cell line) whole cell lysate treated with phosphatase

Lysates/proteins at 10 µg per lane.

#### Secondary

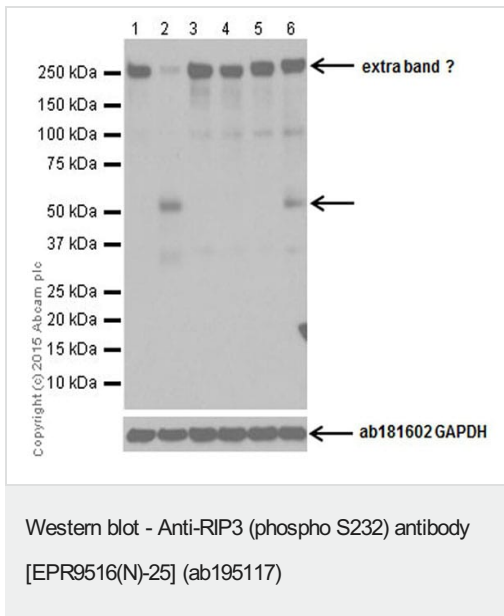
**All lanes :** Goat Anti-Rabbit IgG H&L (HRP) ([ab97051](#)) at 1/100000 dilution

**Predicted band size:** 53 kDa

**Observed band size:** 53 kDa

**Exposure time:** 3 minutes

Blocking/Dilution buffer: 5% NFDM/TBST.



**All lanes :** Anti-RIP3 (phospho S232) antibody [EPR9516(N)-25] (ab195117) at 1/2000 dilution

**Lane 1 :** Untreated TSE (WT) whole cell lysate

**Lane 2 :** TSE (WT) whole cell lysate treated with 20 ng/ml TNF alpha, 100 nM Smac mimetic, and 20 µM z-VAD for 12 h and then harvested

**Lane 3 :** Untreated TSE (KO RIP3) whole cell lysate

**Lane 4 :** TSE (KO RIP3) whole cell lysate treated with 20 ng/ml TNF alpha, 100 nM Smac mimetic, and 20 µM z-VAD for 12 h and then harvested

**Lane 5 :** Untreated TSE (KO MLKL) whole cell lysate

**Lane 6 :** TSE (KO MLKL) whole cell lysate treated with 20 ng/ml TNF alpha, 100 nM Smac mimetic, and 20 µM z-VAD for 12 h and then harvested

Lysates/proteins at 10 µg per lane.

#### Secondary

**All lanes :** Goat Anti-Rabbit IgG H&L (HRP) ([ab97051](#)) at 1/1000 dilution

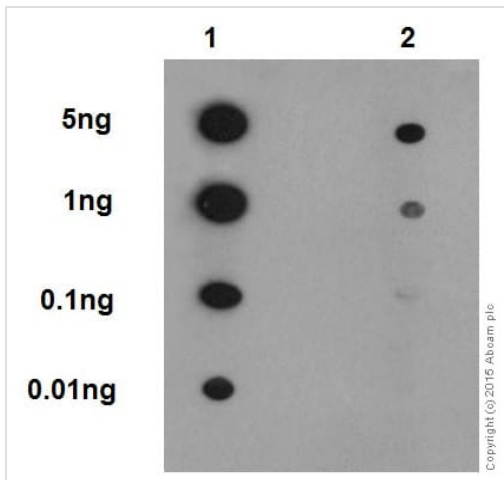
**Predicted band size:** 53 kDa

**Observed band size:** 53 kDa

**Exposure time:** 30 seconds

Blocking/Dilution buffer: 5% NFDM/TBST.

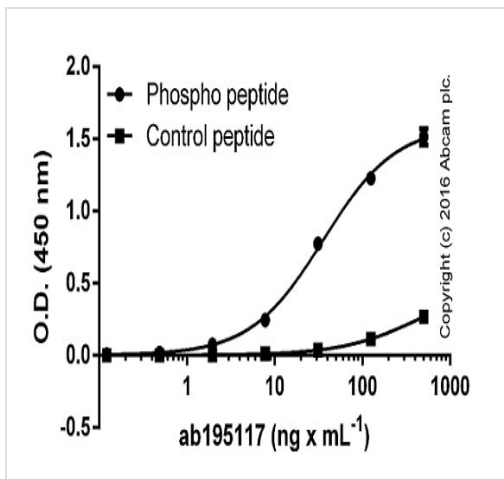
Lysates were provided by Xiaodong Wang, National Institute of Biological Sciences, Beijing



Dot Blot - Anti-RIP3 (phospho S232) antibody  
[EPR9516(N)-25] (ab195117)

Primary antibody: ab195117 at 1:1000 dilution (1.6µg/ml), secondary antibody: Goat Anti-Rabbit IgG, (H+L), Peroxidase conjugated (**ab97051**) at 1:1000 dilution, Blocking and dilution buffer: 5% NFDM/TBST, Lane 1: RIP3 (phospho S232) phospho peptide, Lane 2: RIP3 Non-phospho peptide, Exposure time: 3 minutes.

We observed weak binding to the non-phospho peptide at very high concentrations.



ELISA - Anti-RIP3 (phospho S232) antibody  
[EPR9516(N)-25] (ab195117)

Serially diluted ab195117 was bound to immobilized phospho or non-phospho (control) peptide demonstrating minimal cross-reactivity to the non-phosphorylated residue. Antigen - RIP3 (phospho S232) phospho peptide; RIP3 non-phospho peptide at 250 ng/ml. Primary antibody concentration range: 0 - 500 ng/ml. Secondary antibody - Alkaline Phosphatase-conjugated AffiniPure Goat Anti-Rabbit IgG(H+L) at 1:2500.

### Why choose a recombinant antibody?



**Research with confidence**  
Consistent and reproducible results



**Long-term and scalable supply**  
Recombinant technology



**Success from the first experiment**  
Confirmed specificity



**Ethical standards compliant**  
Animal-free production

Anti-RIP3 (phospho S232) antibody [EPR9516(N)-25] (ab195117)

**Please note:** All products are "FOR RESEARCH USE ONLY. NOT FOR USE IN DIAGNOSTIC PROCEDURES"

### Our Abpromise to you: Quality guaranteed and expert technical support

---

- Replacement or refund for products not performing as stated on the datasheet
- Valid for 12 months from date of delivery
- Response to your inquiry within 24 hours
- We provide support in Chinese, English, French, German, Japanese and Spanish
- Extensive multi-media technical resources to help you
- We investigate all quality concerns to ensure our products perform to the highest standards

If the product does not perform as described on this datasheet, we will offer a refund or replacement. For full details of the Abpromise, please visit <https://www.abcam.cn/abpromise> or contact our technical team.

### Terms and conditions

---

- Guarantee only valid for products bought direct from Abcam or one of our authorized distributors