

Anti-RIP3 antibody ab62344

★★★★★ [5 Abreviews](#) [40 References](#) [2 图像](#)

概述	
产品名称	Anti-RIP3抗体
描述	兔多克隆抗体to RIP3
宿主	Rabbit
经测试应用	适用于: WB, IHC-P
种属反应性	与反应: Mouse
免疫原	Synthetic peptide corresponding to Mouse RIP3 (C terminal). Database link: Q9Z2P5
阳性对照	WB: Mouse C2C12 cell lysate. IHC-P: Mouse kidney tissue.
常规说明	<p>The Life Science industry has been in the grips of a reproducibility crisis for a number of years. Abcam is leading the way in addressing this with our range of recombinant monoclonal antibodies and knockout edited cell lines for gold-standard validation. Please check that this product meets your needs before purchasing.</p> <p>If you have any questions, special requirements or concerns, please send us an inquiry and/or contact our Support team ahead of purchase. Recommended alternatives for this product can be found below, along with publications, customer reviews and Q&As</p>
性能	
形式	Liquid
存放说明	Shipped at 4°C. Store at +4°C short term (1-2 weeks). Store at +4°C.
存储溶液	pH: 7.2 Preservative: 0.02% Sodium azide Constituent: PBS
纯度	Immunogen affinity purified
克隆	多克隆
同种型	IgG
应用	

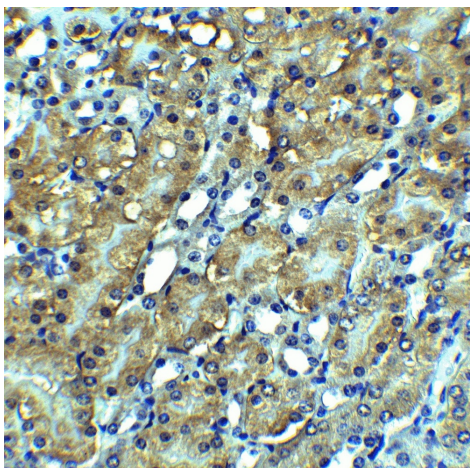
“应用说明”部分 下显示的仅为推荐的起始稀释度;实际最佳的稀释度/浓度应由使用者检定。

应用	Ab评论	说明
WB		Use a concentration of 1 µg/ml. Detects a band of approximately 57 kDa (predicted molecular weight: 57 kDa). Primary antibody incubation: 1h incubation at Room Temperature in 5% NFDM/TBST. Observed: 53kD for mouse RIP3
IHC-P	★★★★★ (1)	Use a concentration of 5 µg/ml.

靶标

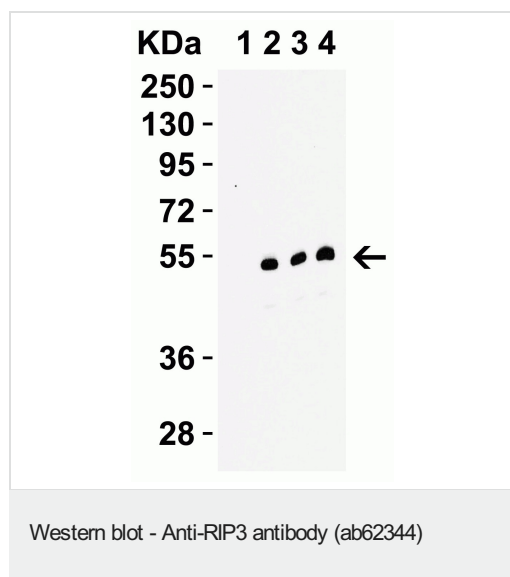
功能	Promotes apoptosis.
组织特异性	Detected at lower levels in heart, placenta, lung and kidney. Isoform 3 is significantly increased in colon and lung cancers.
序列相似性	Belongs to the protein kinase superfamily. TKL Ser/Thr protein kinase family. Contains 1 protein kinase domain.
翻译后修饰	Autophosphorylated.
细胞定位	Cytoplasm.

图片



Immunohistochemical analysis of paraffin-embedded mouse kidney tissue with ab62344 at 2.5 µg/mL. Sections were fixed with formaldehyde and blocked with 10% serum for 1 h at RT; antigen retrieval was by heat mediation with a citrate buffer (pH 6.0). Samples were incubated with primary antibody overnight at 4°C. A goat anti-rabbit IgG H&L (HRP) at 1/250 was used as secondary. Counter stained with Hematoxylin.

Immunohistochemistry (Formalin/PFA-fixed paraffin-embedded sections) - Anti-RIP3 antibody (ab62344)



Lanes 1-2 : Anti-RIP3 antibody (ab62344) at 0.1 µg/ml

Lane 3 : Anti-RIP3 antibody (ab62344) at 0.2 µg/ml

Lane 4 : Anti-RIP3 antibody (ab62344) at 0.5 µg/ml

Lane 1 : C2C12 (mouse myoblast cell line) cell lysate with Peptide blocking

Lanes 2-4 : C2C12 (mouse myoblast cell line) cell lysate

Lysates/proteins at 15 µg per lane.

Secondary

All lanes : Goat anti-rabbit IgG HRP conjugate at 1/10000 dilution

Predicted band size: 57 kDa

Primary antibody incubation: 1h incubation at Room Temperature in 5% NFDM/TBST.

Please note: All products are "FOR RESEARCH USE ONLY. NOT FOR USE IN DIAGNOSTIC PROCEDURES"

Our Abpromise to you: Quality guaranteed and expert technical support

- Replacement or refund for products not performing as stated on the datasheet
- Valid for 12 months from date of delivery
- Response to your inquiry within 24 hours
- We provide support in Chinese, English, French, German, Japanese and Spanish
- Extensive multi-media technical resources to help you
- We investigate all quality concerns to ensure our products perform to the highest standards

If the product does not perform as described on this datasheet, we will offer a refund or replacement. For full details of the Abpromise, please visit <https://www.abcam.cn/abpromise> or contact our technical team.

Terms and conditions

- Guarantee only valid for products bought direct from Abcam or one of our authorized distributors