

Anti-RIP3 antibody ab226297

1 [References](#) **2** [图像](#)

概述

产品名称	Anti-RIP3抗体
描述	兔多克隆抗体to RIP3
宿主	Rabbit
经测试应用	适用于: WB, IP
种属反应性	与反应: Human 预测可用于: Chimpanzee, Gorilla, Orangutan 
免疫原	Synthetic peptide within Human RIP3 aa 400-450. The exact sequence is proprietary. (NP_006862.2). Database link: Q9Y572
阳性对照	WB: Jurkat whole cell lysate (ab7899). IP: Jurkat whole cell lysate (ab7899).
常规说明	<p>The Life Science industry has been in the grips of a reproducibility crisis for a number of years. Abcam is leading the way in addressing this with our range of recombinant monoclonal antibodies and knockout edited cell lines for gold-standard validation. Please check that this product meets your needs before purchasing.</p> <p>If you have any questions, special requirements or concerns, please send us an inquiry and/or contact our Support team ahead of purchase. Recommended alternatives for this product can be found below, along with publications, customer reviews and Q&As</p>

性能

形式	Liquid
存放说明	Shipped at 4°C. Store at +4°C short term (1-2 weeks). Upon delivery aliquot. Store at -20°C long term. Avoid freeze / thaw cycle.
存储溶液	pH: 7 Preservative: 0.09% Sodium azide Constituent: Tris citrate/phosphate
纯度	pH 7 to 8 Immunogen affinity purified
纯化说明	ab226297 was affinity purified using an epitope specific to RIP3 immobilized on solid support.
克隆	多克隆

同种型IgG

应用

The Abpromise guarantee **Abpromise™**承诺保证使用ab226297于以下的经测试应用

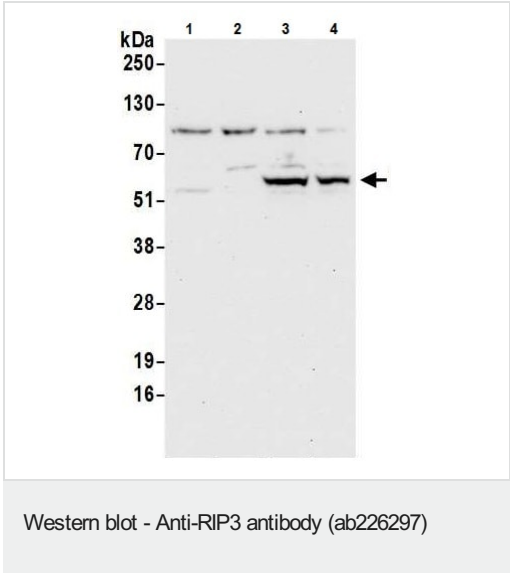
“应用说明”部分 下显示的仅为推荐的起始稀释度;实际最佳的稀释度/浓度应由使用者检定。

应用	Ab评论	说明
WB		1/1000 - 1/5000. Predicted molecular weight: 57 kDa.
IP		Use at 2-10 µg/mg of lysate.

靶标

功能	Promotes apoptosis.
组织特异性	Detected at lower levels in heart, placenta, lung and kidney. Isoform 3 is significantly increased in colon and lung cancers.
序列相似性	Belongs to the protein kinase superfamily. TKL Ser/Thr protein kinase family. Contains 1 protein kinase domain.
翻译后修饰	Autophosphorylated.
细胞定位	Cytoplasm.

图片



All lanes : Anti-RIP3 antibody (ab226297) at 0.4 µg/ml

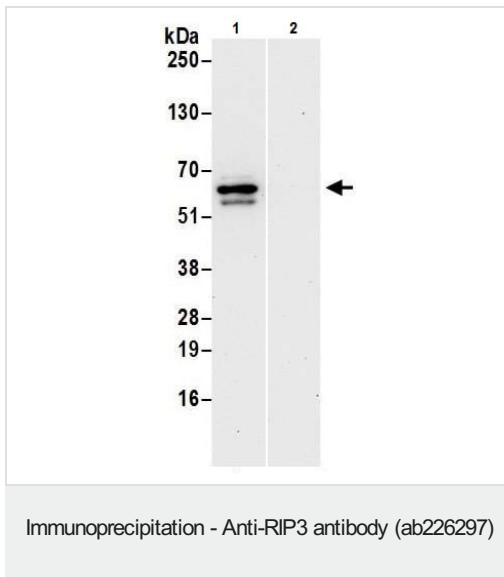
- Lane 1 :** HeLa (human epithelial cell line from cervix adenocarcinoma) whole cell lysate prepared using NETN buffer
- Lane 2 :** HEK-293T (human epithelial cell line from embryonic kidney transformed with large T antigen) whole cell lysate prepared using NETN buffer
- Lane 3 :** Jurkat (human T cell leukemia cell line from peripheral blood) whole cell lysate prepared using NETN buffer
- Lane 4 :** Jurkat (human T cell leukemia cell line from peripheral blood) whole cell lysate prepared using RIPA buffer

Lysates/proteins at 50 µg per lane.

Developed using the ECL technique.

Predicted band size: 57 kDa

Exposure time: 30 seconds



RIP3 was immunoprecipitated from Jurkat (human T cell leukemia cell line from peripheral blood) whole cell lysate (prepared using RIPA buffer; 1 mg for IP, 20% of IP loaded) with ab226297 at 6 µg per reaction. Western blot was performed from the immunoprecipitate using ab226297 at 1 µg/ml.

Lane 1: ab226297 IP in Jurkat whole cell lysate.

Lane 2: Control IgG IP in Jurkat whole cell lysate.

Detection: Chemiluminescence with exposure time of 30 seconds.

Please note: All products are "FOR RESEARCH USE ONLY. NOT FOR USE IN DIAGNOSTIC PROCEDURES"

Our Abpromise to you: Quality guaranteed and expert technical support

- Replacement or refund for products not performing as stated on the datasheet
- Valid for 12 months from date of delivery
- Response to your inquiry within 24 hours
- We provide support in Chinese, English, French, German, Japanese and Spanish
- Extensive multi-media technical resources to help you
- We investigate all quality concerns to ensure our products perform to the highest standards

If the product does not perform as described on this datasheet, we will offer a refund or replacement. For full details of the Abpromise, please visit <https://www.abcam.cn/abpromise> or contact our technical team.

Terms and conditions

- Guarantee only valid for products bought direct from Abcam or one of our authorized distributors