



Anti-RIP2 antibody ab8428

8 References **5 图像**

概述

产品名称	Anti-RIP2抗体
描述	兔多克隆抗体to RIP2
宿主	Rabbit
经测试应用	适用于: WB, ICC/IF
种属反应性	与反应: Mouse, Human
免疫原	Synthetic peptide: PTIPYHKLADLRYLSRGASG , corresponding to amino acids 11/30 of Human RIP2. (Peptide available as ab8463 .)  Run BLAST with  Run BLAST with
阳性对照	A431 or K562 whole cell lysate An approximately 60 kDa band can be detected.
常规说明	<p>The Life Science industry has been in the grips of a reproducibility crisis for a number of years. Abcam is leading the way in addressing this with our range of recombinant monoclonal antibodies and knockout edited cell lines for gold-standard validation. Please check that this product meets your needs before purchasing.</p> <p>If you have any questions, special requirements or concerns, please send us an inquiry and/or contact our Support team ahead of purchase. Recommended alternatives for this product can be found below, along with publications, customer reviews and Q&As</p>

性能

形式	Liquid
存放说明	Shipped at 4°C. Store at +4°C short term (1-2 weeks). Store at +4°C.
存储溶液	pH: 7.2 Preservative: 0.02% Sodium azide
纯度	Affinity purified
克隆	多克隆
同种型	IgG

应用

The Abpromise guarantee

Abpromise™承诺保证使用ab8428于以下的经测试应用

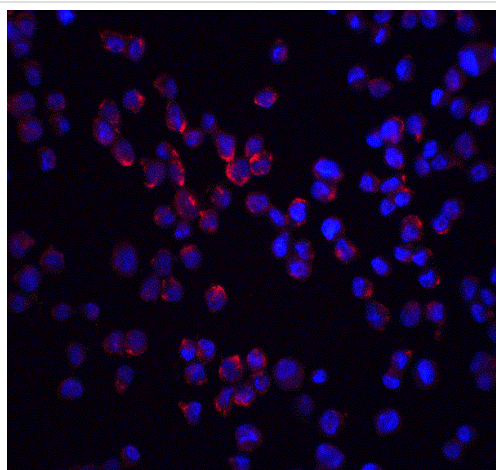
“应用说明”部分 下显示的仅为推荐的起始稀释度;实际最佳的稀释度/浓度应由使用者检定。

应用	Ab评论	说明
WB		1/1000. Detects a band of approximately 60 kDa.
ICC/IF		Use a concentration of 10 µg/ml.

靶标

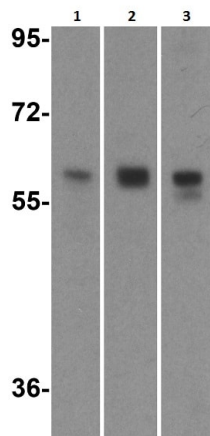
功能	Activates pro-caspase-1 and pro-caspase-8. Potentiates CASP8-mediated apoptosis. Activates NF-kappa-B.
组织特异性	Detected in heart, brain, placenta, lung, peripheral blood leukocytes, spleen, kidney, testis, prostate, pancreas and lymph node.
序列相似性	Belongs to the protein kinase superfamily. TKL Ser/Thr protein kinase family. Contains 1 CARD domain. Contains 1 protein kinase domain.
翻译后修饰	Autophosphorylated. Phosphorylated upon DNA damage, probably by ATM or ATR. Ubiquitinated; undergoes 'Lys-63'-linked polyubiquitination catalyzed by ITCH.
细胞定位	Cytoplasm.

图片



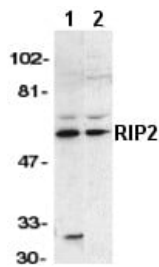
Immunocytochemistry/ Immunofluorescence of K562 cells staining RIP2 with ab8428 at 20µg/ml

Immunocytochemistry/ Immunofluorescence - Anti-RIP2 antibody (ab8428)



Western blot - Anti-RIP2 antibody (ab8428)

Western Blot of HeLa (1), Ramos (2) and EL4 (3) cell lysates labeling RIP2 with Anti-RIP2 antibody (ab8428) at 1 µg/ml.



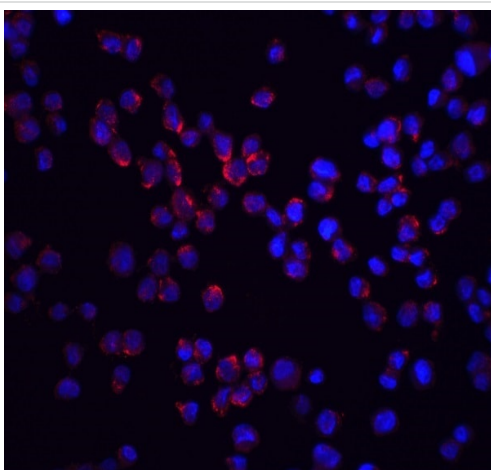
Western blot - Anti-RIP2 antibody (ab8428)

All lanes : Anti-RIP2 antibody (ab8428) at 1/1000 dilution

Lane 1 : A431 whole cell lysate

Lane 2 : K562 whole cell lysate

Observed band size: 60 kDa



Immunocytochemistry/ Immunofluorescence - Anti-RIP2 antibody (ab8428)

Ab8428 at 20 µg/ml staining RIP2 in K562 cells by ICC/IF (Immunocytochemistry/Immunofluorescence).



ab8428 at 10µg/ml staining RIP2 in A431 cells by ICC/IF

Immunocytochemistry/ Immunofluorescence - Anti-RIP2 antibody (ab8428)

Please note: All products are "FOR RESEARCH USE ONLY. NOT FOR USE IN DIAGNOSTIC PROCEDURES"

Our Abpromise to you: Quality guaranteed and expert technical support

- Replacement or refund for products not performing as stated on the datasheet
- Valid for 12 months from date of delivery
- Response to your inquiry within 24 hours
- We provide support in Chinese, English, French, German, Japanese and Spanish
- Extensive multi-media technical resources to help you
- We investigate all quality concerns to ensure our products perform to the highest standards

If the product does not perform as described on this datasheet, we will offer a refund or replacement. For full details of the Abpromise, please visit <https://www.abcam.cn/abpromise> or contact our technical team.

Terms and conditions

- Guarantee only valid for products bought direct from Abcam or one of our authorized distributors