




Anti-RIP2 antibody ab217549

[1 Abreviews](#) [1 图像](#)

概述

产品名称	Anti-RIP2抗体
描述	兔多克隆抗体to RIP2
宿主	Rabbit
经测试应用	适用于: IHC-P
种属反应性	与反应: Rat 预测可用于: Mouse, Human 
免疫原	Synthetic peptide within Human RIP2 aa 450 to the C-terminus conjugated to keyhole limpet haemocyanin. The exact immunogen sequence used to generate this antibody is proprietary information. If additional detail on the immunogen is needed to determine the suitability of the antibody for your needs, please contact our Scientific Support team to discuss your requirements. Database link: O43353  Run BLAST with  Run BLAST with
阳性对照	Rat lung tissue
常规说明	<p>The Life Science industry has been in the grips of a reproducibility crisis for a number of years. Abcam is leading the way in addressing this with our range of recombinant monoclonal antibodies and knockout edited cell lines for gold-standard validation. Please check that this product meets your needs before purchasing.</p> <p>If you have any questions, special requirements or concerns, please send us an inquiry and/or contact our Support team ahead of purchase. Recommended alternatives for this product can be found below, along with publications, customer reviews and Q&As</p>

性能

形式	Liquid
存放说明	Shipped at 4°C. Store at +4°C short term (1-2 weeks). Upon delivery aliquot. Store at -20°C long term. Avoid freeze / thaw cycle.
存储溶液	pH: 7.40 Preservative: 0.02% Proclin 300 Constituents: 50% Glycerol (glycerin, glycerine), 1% BSA, 48.98% TBS, 1X
纯度	Protein A purified

克隆

多克隆

同种型

IgG

应用

The Abpromise guarantee

Abpromise™承诺保证使用ab217549于以下的经测试应用

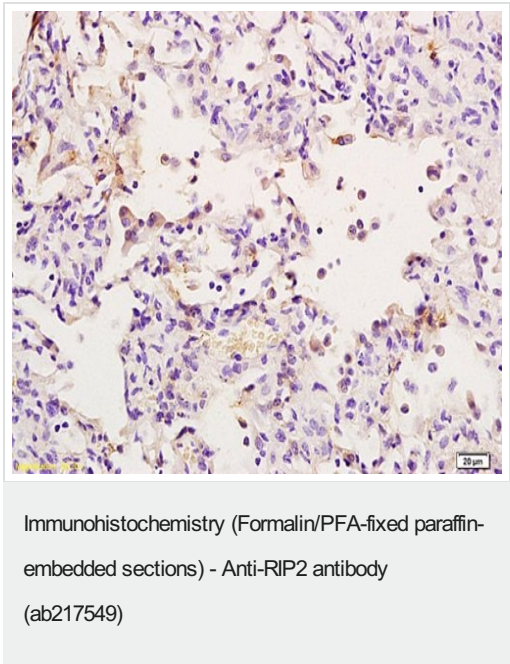
“应用说明”部分 下显示的仅为推荐的起始稀释度;实际最佳的稀释度/浓度应由使用者检定。

应用	Ab评论	说明
IHC-P		1/100 - 1/500. Perform heat mediated antigen retrieval with citrate buffer pH 6 before commencing with IHC staining protocol.

靶标

功能	Activates pro-caspase-1 and pro-caspase-8. Potentiates CASP8-mediated apoptosis. Activates NF-kappa-B.
组织特异性	Detected in heart, brain, placenta, lung, peripheral blood leukocytes, spleen, kidney, testis, prostate, pancreas and lymph node.
序列相似性	Belongs to the protein kinase superfamily. TKL Ser/Thr protein kinase family. Contains 1 CARD domain. Contains 1 protein kinase domain.
翻译后修饰	Autophosphorylated. Phosphorylated upon DNA damage, probably by ATM or ATR. Ubiquitinated; undergoes 'Lys-63'-linked polyubiquitination catalyzed by ITCH.
细胞定位	Cytoplasm.

图片



Immunohistochemical analysis of formalin-fixed paraffin-embedded rat lung tissue, labeling RIP2 using ab217549 at a 1/200 dilution, followed by conjugation to the secondary antibody and DAB staining.

Please note: All products are "FOR RESEARCH USE ONLY. NOT FOR USE IN DIAGNOSTIC PROCEDURES"

Our Abpromise to you: Quality guaranteed and expert technical support

- Replacement or refund for products not performing as stated on the datasheet
- Valid for 12 months from date of delivery
- Response to your inquiry within 24 hours

- We provide support in Chinese, English, French, German, Japanese and Spanish
- Extensive multi-media technical resources to help you
- We investigate all quality concerns to ensure our products perform to the highest standards

If the product does not perform as described on this datasheet, we will offer a refund or replacement. For full details of the Abpromise, please visit <https://www.abcam.cn/abpromise> or contact our technical team.

Terms and conditions

- Guarantee only valid for products bought direct from Abcam or one of our authorized distributors