

Anti-RIN3 antibody ab64838

[1 References](#) [1 图像](#)

概述

产品名称	Anti-RIN3抗体
描述	兔多克隆抗体to RIN3
宿主	Rabbit
经测试应用	适用于: WB
种属反应性	与反应: Human
免疫原	Synthetic peptide. This information is proprietary to Abcam and/or its suppliers.
阳性对照	HUVEC and K562 cell extracts.
常规说明	<p>The Life Science industry has been in the grips of a reproducibility crisis for a number of years. Abcam is leading the way in addressing this with our range of recombinant monoclonal antibodies and knockout edited cell lines for gold-standard validation. Please check that this product meets your needs before purchasing.</p> <p>If you have any questions, special requirements or concerns, please send us an inquiry and/or contact our Support team ahead of purchase. Recommended alternatives for this product can be found below, along with publications, customer reviews and Q&As</p>

性能

形式	Liquid
存放说明	Shipped at 4°C. Store at -20°C. Stable for 12 months at -20°C.
存储溶液	pH: 7.40 Preservative: 0.02% Sodium azide Constituents: PBS, 50% Glycerol (glycerin, glycerine), 0.87% Sodium chloride
	Without Mg ²⁺ and Ca ²⁺
纯度	Immunogen affinity purified
克隆	多克隆
同种型	IgG

应用

The Abpromise guarantee

Abpromise™ 承诺保证使用 ab64838 于以下的经测试应用

“应用说明”部分 下显示的仅为推荐的起始稀释度;实际最佳的稀释度/浓度应由使用者检定。

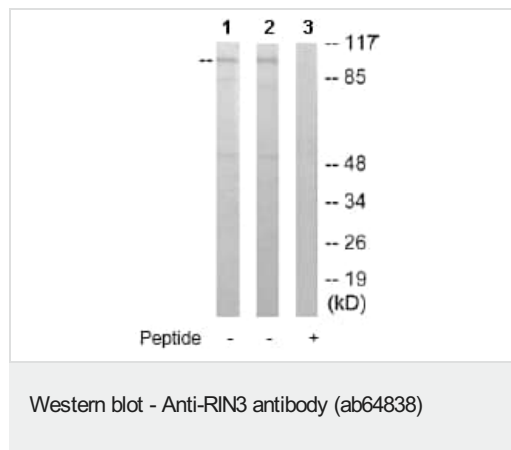
应用	Ab评论	说明
WB		1/500 - 1/1000. Detects a band of approximately 108 kDa (predicted molecular weight: 108 kDa).

靶标

相关性 RIN3 belongs to the RIN family of Ras interaction-interference proteins, which are binding partners to the RAB5 small GTPases.

细胞定位 Cytoplasm. Cytoplasmic vesicle. Early endosome. Note: Activation of tyrosine phosphorylation signaling induces translocation to cytoplasmic vesicles.

图片



All lanes : Anti-RIN3 antibody (ab64838) at 1/500 dilution

Lane 1 : HUVEC cell extract

Lane 2 : K562 cell extract

Lane 3 : HUVEC cell extract with Immunising peptide

Predicted band size: 108 kDa

Observed band size: 108 kDa

The amount of positive control loading for the WB is 5-30 ug of total protein. The amount of the peptide for the WB is 5-10 ug.

Please note: All products are "FOR RESEARCH USE ONLY. NOT FOR USE IN DIAGNOSTIC PROCEDURES"

Our Abpromise to you: Quality guaranteed and expert technical support

- Replacement or refund for products not performing as stated on the datasheet
- Valid for 12 months from date of delivery
- Response to your inquiry within 24 hours
- We provide support in Chinese, English, French, German, Japanese and Spanish
- Extensive multi-media technical resources to help you
- We investigate all quality concerns to ensure our products perform to the highest standards

If the product does not perform as described on this datasheet, we will offer a refund or replacement. For full details of the Abpromise,

please visit <https://www.abcam.cn/abpromise> or contact our technical team.

Terms and conditions

- Guarantee only valid for products bought direct from Abcam or one of our authorized distributors