

# Anti-RIM2 antibody ab69860

[1 Abreviews](#) [1 References](#) [2 图像](#)

### 概述

---

<b>产品名称</b>	Anti-RIM2抗体
<b>描述</b>	兔多克隆抗体to RIM2
<b>宿主</b>	Rabbit
<b>特异性</b>	RIM2 is known to exist in multiple isoforms; this antibody should recognize most of them. The antibody is predicted to have no cross reactivity to other RIM proteins.
<b>经测试应用</b>	<b>适用于:</b> WB, IHC-P <b>不适用于:</b> IHC-FoFr
<b>种属反应性</b>	<b>与反应:</b> Human
<b>免疫原</b>	A 17 amino acid synthetic peptide near the center of human RIM2
<b>常规说明</b>	<p>The Life Science industry has been in the grips of a reproducibility crisis for a number of years. Abcam is leading the way in addressing this with our range of recombinant monoclonal antibodies and knockout edited cell lines for gold-standard validation. Please check that this product meets your needs before purchasing.</p> <p>If you have any questions, special requirements or concerns, please send us an inquiry and/or contact our Support team ahead of purchase. Recommended alternatives for this product can be found below, along with publications, customer reviews and Q&amp;As</p>

### 性能

---

<b>形式</b>	Liquid
<b>存放说明</b>	Shipped at 4°C. Store at +4°C short term (1-2 weeks). Upon delivery aliquot. Store at -20°C. Avoid freeze / thaw cycle.
<b>存储溶液</b>	pH: 7.2 Preservative: 0.02% Sodium azide Constituent: PBS
<b>纯度</b>	Immunogen affinity purified
<b>克隆</b>	多克隆
<b>同种型</b>	IgG

### 应用

---

## The Abpromise guarantee

**Abpromise™** 承诺保证使用ab69860于以下的经测试应用

“应用说明”部分 下显示的仅为推荐的起始稀释度;实际最佳的稀释度/浓度应由使用者检定。

应用	Ab评论	说明
WB		Use a concentration of 1 µg/ml. Predicted molecular weight: 160 kDa.
IHC-P		Use a concentration of 5 µg/ml.

### 应用说明

Is unsuitable for IHC-FoFr.

### 靶标

#### 功能

Rab effector involved in exocytosis. May act as scaffold protein.

#### 序列相似性

Contains 2 C2 domains.

Contains 1 FYVE-type zinc finger.

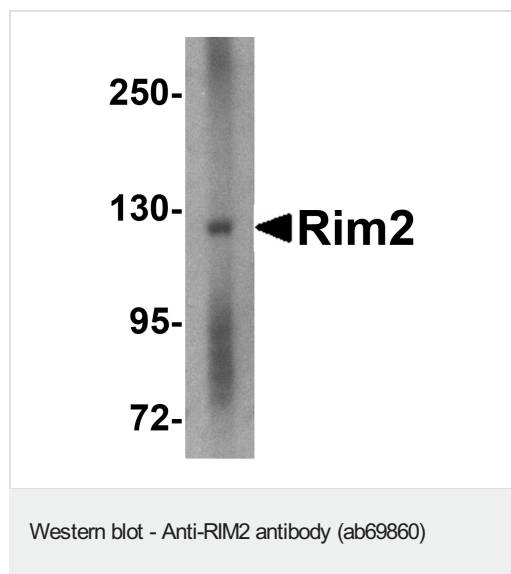
Contains 1 PDZ (DHR) domain.

Contains 1 RabBD (Rab-binding) domain.

#### 细胞定位

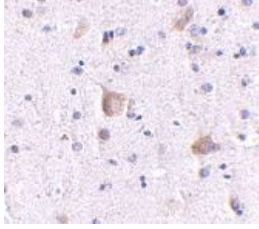
Cell membrane. Cell junction > synapse. Cell junction > synapse > presynaptic cell membrane.

### 图片



Anti-RIM2 antibody (ab69860) at 1 µg/ml + Human brain lysates

**Predicted band size:** 160 kDa



ab69860 at 5 µg/ml staining RIM2 in human prostate tissue section by Immunohistochemistry (Formalin/ PFA fixed paraffin-embedded sections).

Immunohistochemistry (Formalin/PFA-fixed paraffin-embedded sections) - Anti-RIM2 antibody (ab69860)

**Please note:** All products are "FOR RESEARCH USE ONLY. NOT FOR USE IN DIAGNOSTIC PROCEDURES"

### Our Abpromise to you: Quality guaranteed and expert technical support

---

- Replacement or refund for products not performing as stated on the datasheet
- Valid for 12 months from date of delivery
- Response to your inquiry within 24 hours
- We provide support in Chinese, English, French, German, Japanese and Spanish
- Extensive multi-media technical resources to help you
- We investigate all quality concerns to ensure our products perform to the highest standards

If the product does not perform as described on this datasheet, we will offer a refund or replacement. For full details of the Abpromise, please visit <https://www.abcam.cn/abpromise> or contact our technical team.

### Terms and conditions

---

- Guarantee only valid for products bought direct from Abcam or one of our authorized distributors