

Anti-Ribonuclease H2, subunit A/RNASEH2A antibody ab92876

[3 References](#) [4 图像](#)

概述

产品名称	Anti-Ribonuclease H2, subunit A/RNASEH2A抗体
描述	小鼠多克隆抗体to Ribonuclease H2, subunit A/RNASEH2A
宿主	Mouse
经测试应用	适用于: WB, ICC/IF
种属反应性	与反应: Human
免疫原	Recombinant full length protein within Human Ribonuclease H2, subunit A/RNASEH2A. The exact immunogen sequence used to generate this antibody is proprietary information. If additional detail on the immunogen is needed to determine the suitability of the antibody for your needs, please contact our Scientific Support team to discuss your requirements. Database link: NP_006388.2
阳性对照	COLO 320 HSR cell lysate, Jurkat cell lysate and HeLa cell.
常规说明	<p>The Life Science industry has been in the grips of a reproducibility crisis for a number of years. Abcam is leading the way in addressing this with our range of recombinant monoclonal antibodies and knockout edited cell lines for gold-standard validation. Please check that this product meets your needs before purchasing.</p> <p>If you have any questions, special requirements or concerns, please send us an inquiry and/or contact our Support team ahead of purchase. Recommended alternatives for this product can be found below, along with publications, customer reviews and Q&As</p>

性能

形式	Liquid
存放说明	Shipped at 4°C. Upon delivery aliquot. Store at -20°C or -80°C. Avoid freeze / thaw cycle.
存储溶液	pH: 7.4 Constituent: PBS
纯度	Protein A purified
克隆	多克隆
同种型	IgG

应用

The Abpromise guarantee

Abpromise™ 承诺保证使用ab92876于以下的经测试应用

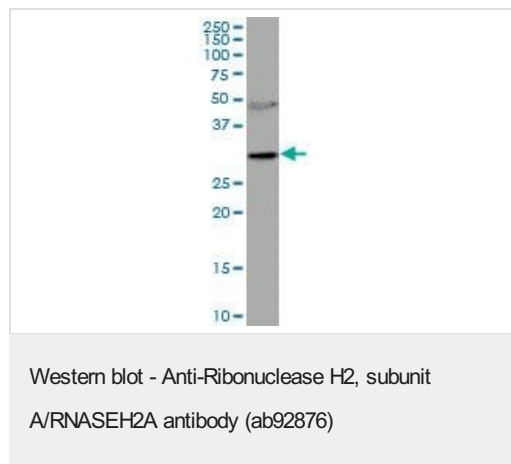
“应用说明”部分下显示的仅为推荐的起始稀释度;实际最佳的稀释度/浓度应由使用者检定。

应用	Ab评论	说明
WB		1/500 - 1/1000. Predicted molecular weight: 33 kDa.
ICC/IF		Use a concentration of 10 µg/ml.

靶标

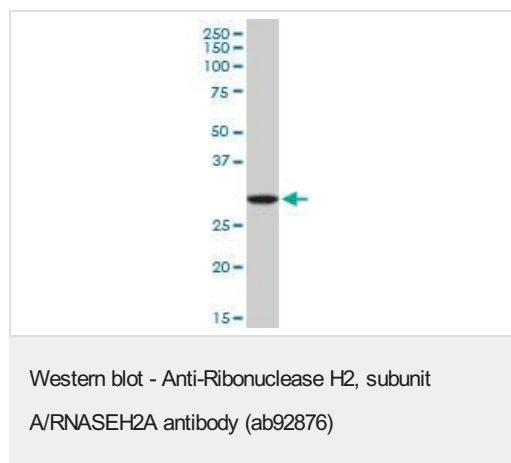
功能	Catalytic subunit of RNase HII, an endonuclease that specifically degrades the RNA of RNA:DNA hybrids. Participates in DNA replication, possibly by mediating the removal of lagging-strand Okazaki fragment RNA primers during DNA replication. Mediates the excision of single ribonucleotides from DNA:RNA duplexes.
疾病相关	Aicardi-Goutieres syndrome 4
序列相似性	Belongs to the RNase HII family. Eukaryotic subfamily.
细胞定位	Nucleus.

图片



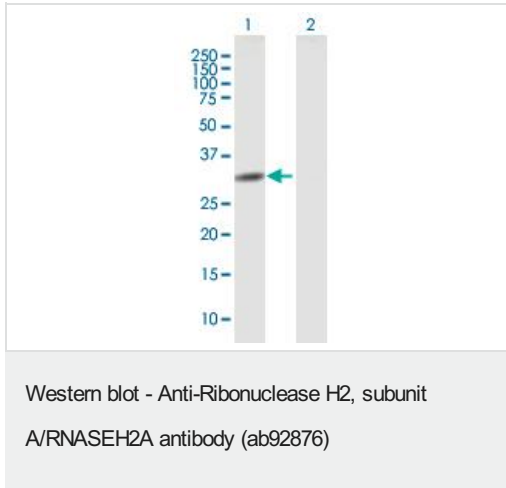
Anti-Ribonuclease H2, subunit A/RNASEH2A antibody (ab92876)
at 1/500 dilution + COLO 320 HSR at 50 µg

Predicted band size: 33 kDa



Anti-Ribonuclease H2, subunit A/RNASEH2A antibody (ab92876)
at 1/500 dilution + Jurkat cell lysate at 50 µg

Predicted band size: 33 kDa



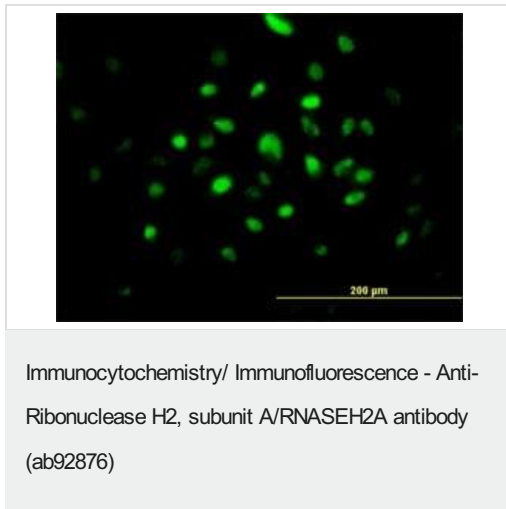
All lanes : Anti-Ribonuclease H2, subunit A/RNASEH2A antibody (ab92876) at 1/500 dilution

Lane 1 : Ribonuclease H2, subunit A/RNASEH2A transfected 293T cell lysate

Lane 2 : Non-transfected cell line.

Lysates/proteins at 50 µg per lane.

Predicted band size: 33 kDa



ab92876 at 10µg/ml staining Ribonuclease H2, subunit A/RNASEH2A on Hela cell by immunofluorescence

Please note: All products are "FOR RESEARCH USE ONLY. NOT FOR USE IN DIAGNOSTIC PROCEDURES"

Our Abpromise to you: Quality guaranteed and expert technical support

- Replacement or refund for products not performing as stated on the datasheet
- Valid for 12 months from date of delivery
- Response to your inquiry within 24 hours
- We provide support in Chinese, English, French, German, Japanese and Spanish
- Extensive multi-media technical resources to help you
- We investigate all quality concerns to ensure our products perform to the highest standards

If the product does not perform as described on this datasheet, we will offer a refund or replacement. For full details of the Abpromise, please visit <https://www.abcam.cn/abpromise> or contact our technical team.

Terms and conditions

- Guarantee only valid for products bought direct from Abcam or one of our authorized distributors