

Anti-Rhp51 antibody ab63799

[3 References](#) [2 图像](#)

概述

产品名称	Anti-Rhp51抗体
描述	兔多克隆抗体to Rhp51
宿主	Rabbit
经测试应用	适用于: WB, IP, ICC/IF
种属反应性	与反应: Schizosaccharomyces pombe
免疫原	Purified recombinant full length protein (Schizosaccharomyces pombe)
阳性对照	Schizosaccharomyces pombe whole cell extracts.
常规说明	<p>The Life Science industry has been in the grips of a reproducibility crisis for a number of years. Abcam is leading the way in addressing this with our range of recombinant monoclonal antibodies and knockout edited cell lines for gold-standard validation. Please check that this product meets your needs before purchasing.</p> <p>If you have any questions, special requirements or concerns, please send us an inquiry and/or contact our Support team ahead of purchase. Recommended alternatives for this product can be found below, along with publications, customer reviews and Q&As</p>

性能

形式	Liquid
存放说明	Shipped at 4°C. Store at +4°C short term (1-2 weeks). Upon delivery aliquot. Store at -20°C or -80°C. Avoid freeze / thaw cycle.
存储溶液	pH: 6 Preservative: 0.09% Sodium azide Constituent: Whole serum
纯度	Whole antiserum
克隆	多克隆
同种型	IgG

应用

The Abpromise guarantee

Abpromise™承诺保证使用ab63799于以下的经测试应用

“应用说明”部分 下显示的仅为推荐的起始稀释度;实际最佳的稀释度/浓度应由使用者检定。

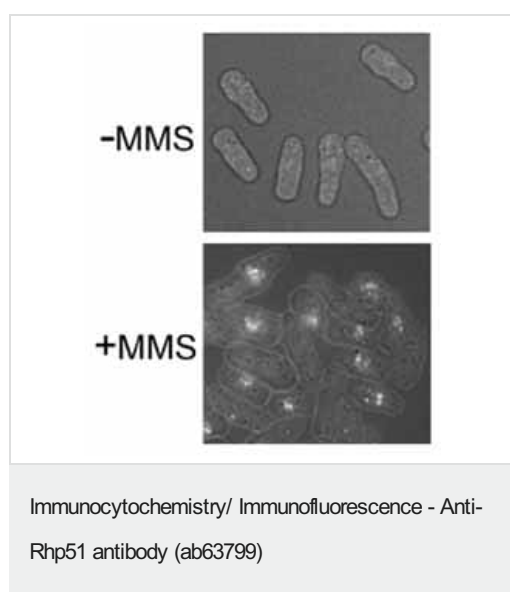
应用	Ab评论	说明
WB		1/2000 - 1/5000. Detects a band of approximately 44 kDa (predicted molecular weight: 40 kDa).
IP		Use at an assay dependent concentration.
ICC/IF		1/500.

靶标

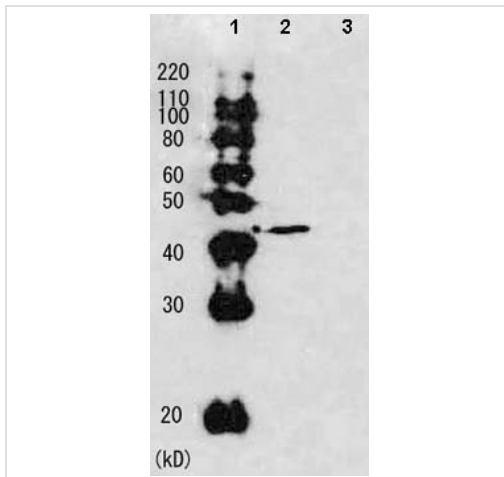
相关性 Rhp51 is required both for recombination and for the repair of DNA damage caused by X-rays. Binds to single and double stranded DNA, in the presence of magnesium, and exhibits DNA-dependent ATPase activity. Promotes DNA strand annealing and strand exchange via DNA recombinase activity and forms helical nucleoprotein filaments.

细胞定位 Nuclear

图片



ab63799 (1/500) staining Rhp51 in *S. pombe* cells without or with MMS (0.025%) treatment for 1 hour by ICC/IF (Immunocytochemistry/immunofluorescence).



Western blot - Anti-Rhp51 antibody (ab63799)

All lanes : Anti-Rhp51 antibody (ab63799) at 1/2000 dilution

Lane 1 : Molecular weight markers

Lane 2 : Whole cell extract of Schizosaccharomyces pombe wild-type strain

Lane 3 : Whole cell extract of Schizosaccharomyces pombe Rad51 deletion strain

Predicted band size: 40 kDa

Observed band size: 44 kDa

Please note: All products are "FOR RESEARCH USE ONLY. NOT FOR USE IN DIAGNOSTIC PROCEDURES"

Our Abpromise to you: Quality guaranteed and expert technical support

- Replacement or refund for products not performing as stated on the datasheet
- Valid for 12 months from date of delivery
- Response to your inquiry within 24 hours
- We provide support in Chinese, English, French, German, Japanese and Spanish
- Extensive multi-media technical resources to help you
- We investigate all quality concerns to ensure our products perform to the highest standards

If the product does not perform as described on this datasheet, we will offer a refund or replacement. For full details of the Abpromise, please visit <https://www.abcam.cn/abpromise> or contact our technical team.

Terms and conditions

- Guarantee only valid for products bought direct from Abcam or one of our authorized distributors