

### Anti-RHOB antibody [2916C2a] ab53743

★★★★★ [1 Abreviews](#) [4 References](#) [1 图像](#)

#### 概述

产品名称	Anti-RHOB抗体[2916C2a]
描述	小鼠单克隆抗体[2916C2a] to RHOB
宿主	Mouse
经测试应用	适用于: WB
种属反应性	与反应: Recombinant fragment
免疫原	Recombinant fragment (Human)
常规说明	<p>The Life Science industry has been in the grips of a reproducibility crisis for a number of years. Abcam is leading the way in addressing this with our range of recombinant monoclonal antibodies and knockout edited cell lines for gold-standard validation. Please check that this product meets your needs before purchasing.</p> <p>If you have any questions, special requirements or concerns, please send us an inquiry and/or contact our Support team ahead of purchase. Recommended alternatives for this product can be found below, along with publications, customer reviews and Q&amp;As</p>

#### 性能

形式	Liquid
存放说明	Shipped at 4°C. Store at +4°C short term (1-2 weeks). Upon delivery aliquot. Store at -20°C or -80°C. Avoid freeze / thaw cycle.
存储溶液	<p>pH: 7.40</p> <p>Preservative: 0.05% Sodium azide</p> <p>Constituents: 1% BSA, PBS</p>
纯度	Protein G purified
纯化说明	Purified from culture supernatant
克隆	单克隆
克隆编号	2916C2a
同种型	IgG1

#### 应用

The Abpromise guarantee Abpromise™承诺保证使用ab53743于以下的经测试应用

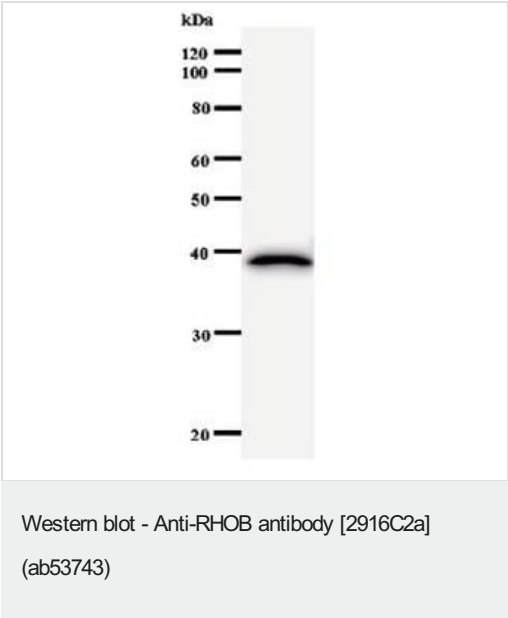
“应用说明”部分 下显示的仅为推荐的起始稀释度;实际最佳的稀释度/浓度应由使用者检定。

应用	Ab评论	说明
WB		Use at an assay dependent concentration. Predicted molecular weight: 22 kDa.

靶标

功能	Mediates apoptosis in neoplastically transformed cells after DNA damage. Not essential for development but affects cell adhesion and growth factor signaling in transformed cells. Plays a negative role in tumorigenesis as deletion causes tumor formation. Involved in intracellular protein trafficking of a number of proteins. Targets PKN1 to endosomes and is involved in trafficking of the EGF receptor from late endosomes to lysosomes. Also required for stability and nuclear trafficking of AKT1/AKT which promotes endothelial cell survival during vascular development.
序列相似性	Belongs to the small GTPase superfamily. Rho family.
翻译后修饰	Prenylation specifies the subcellular location of RHOB. The farnesylated form is localized to the plasma membrane while the geranylgeranylated form is localized to the endosome.
细胞定位	Late endosome membrane. Cell membrane. Nucleus. Late endosomal membrane (geranylgeranylated form). Plasma membrane (farnesylated form). Also detected at the nuclear margin and in the nucleus.

图片



Anti-RHOB antibody [2916C2a] (ab53743) + immunized recombinant protein

**Predicted band size:** 22 kDa  
**Observed band size:** 39 kDa

The band on the Western blot does not correspond to the predicted size, as the recombinant protein was used as the test antigen

Please note: All products are "FOR RESEARCH USE ONLY. NOT FOR USE IN DIAGNOSTIC PROCEDURES"

Our Abpromise to you: Quality guaranteed and expert technical support

- Replacement or refund for products not performing as stated on the datasheet
- Valid for 12 months from date of delivery
- Response to your inquiry within 24 hours
- We provide support in Chinese, English, French, German, Japanese and Spanish
- Extensive multi-media technical resources to help you
- We investigate all quality concerns to ensure our products perform to the highest standards

If the product does not perform as described on this datasheet, we will offer a refund or replacement. For full details of the Abpromise, please visit <https://www.abcam.cn/abpromise> or contact our technical team.

#### **Terms and conditions**

---

- Guarantee only valid for products bought direct from Abcam or one of our authorized distributors