


### Anti-RhoA antibody ab86297

★★★★★ [1 Abreviews](#) [18 References](#) [4 图像](#)

#### 概述

产品名称	Anti-RhoA抗体
描述	兔多克隆抗体to RhoA
宿主	Rabbit
经测试应用	适用于: ICC/IF, WB
种属反应性	与反应: Mouse, Rat, Human 预测可用于: Chicken, Cow, Dog, Zebrafish, Orangutan 
免疫原	Synthetic peptide corresponding to Human RhoA aa 150 to the C-terminus conjugated to keyhole limpet haemocyanin. (Peptide available as <a href="#">ab101307</a> )
阳性对照	This antibody gave a positive signal in the following whole cell lysates: HL60; MCF7; MDA-MB-231; HeLa; Human Platelets.
常规说明	<p>The Life Science industry has been in the grips of a reproducibility crisis for a number of years. Abcam is leading the way in addressing this with our range of recombinant monoclonal antibodies and knockout edited cell lines for gold-standard validation. Please check that this product meets your needs before purchasing.</p> <p>If you have any questions, special requirements or concerns, please send us an inquiry and/or contact our Support team ahead of purchase. Recommended alternatives for this product can be found below, along with publications, customer reviews and Q&amp;As</p>

#### 性能

形式	Liquid
存放说明	Shipped at 4°C. Store at +4°C short term (1-2 weeks). Upon delivery aliquot. Store at -20°C or -80°C. Avoid freeze / thaw cycle.
存储溶液	pH: 7.40 Preservative: 0.02% Sodium azide Constituent: PBS
	Batches of this product that have a concentration < 1mg/ml may have BSA added as a stabilising agent. If you would like information about the formulation of a specific lot, please contact our scientific support team who will be happy to help.

纯度	Immunogen affinity purified
克隆	多克隆
同种型	IgG

应用

The Abpromise guarantee      **Abpromise™**承诺保证使用ab86297于以下的经测试应用

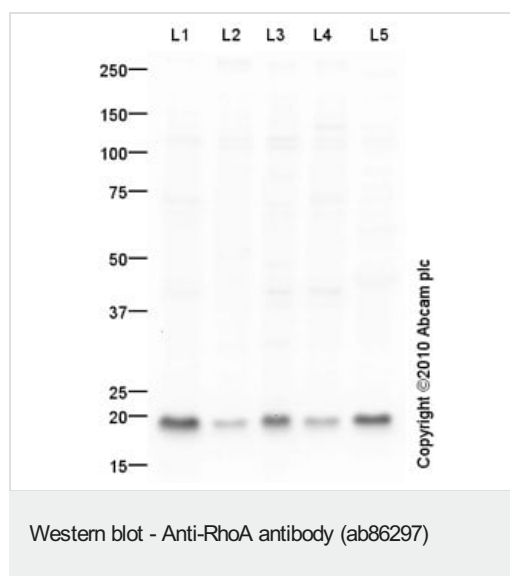
“应用说明”部分 下显示的仅为推荐的起始稀释度;实际最佳的稀释度/浓度应由使用者检定。

应用	Ab评论	说明
ICC/IF		Use a concentration of 10 µg/ml.
WB		Use a concentration of 1 µg/ml. Detects a band of approximately 20 kDa (predicted molecular weight: 21 kDa).

靶标

功能	Regulates a signal transduction pathway linking plasma membrane receptors to the assembly of focal adhesions and actin stress fibers. Serves as a target for the yopT cysteine peptidase from Yersinia pestis, vector of the plague, and Yersinia pseudotuberculosis, which causes gastrointestinal disorders. May be an activator of PLCE1. Activated by ARHGEF2, which promotes the exchange of GDP for GTP.
序列相似性	Belongs to the small GTPase superfamily. Rho family.
结构域	The basic-rich region is essential for yopT recognition and cleavage.
翻译后修饰	Substrate for botulinum ADP-ribosyltransferase. Cleaved by yopT protease when the cell is infected by some Yersinia pathogens. This removes the lipid attachment, and leads to its displacement from plasma membrane and to subsequent cytoskeleton cleavage. AMPylation at Tyr-34 and Thr-37 are mediated by bacterial enzymes in case of infection by H.somnus and V.parahaemolyticus, respectively. AMPylation occurs in the effector region and leads to inactivation of the GTPase activity by preventing the interaction with downstream effectors, thereby inhibiting actin assembly in infected cells. It is unclear whether some human enzyme mediates AMPylation; FICD has such ability in vitro but additional experiments remain to be done to confirm results in vivo. Ubiquitinated by the BCR(BACURD1) and BCR(BACURD2) E3 ubiquitin ligase complexes, leading to its degradation by the proteasome, thereby regulating the actin cytoskeleton and cell migration.
细胞定位	Cell membrane. Cytoplasm > cytoskeleton.

图片



**All lanes :** Anti-RhoA antibody (ab86297) at 1 µg/ml

**Lane 1 :** HL60 (Human promyelocytic leukemia cell line) Whole Cell Lysate

**Lane 2 :** MCF7 (Human breast adenocarcinoma cell line) Whole Cell Lysate

**Lane 3 :** MDA-MB-231 (Human breast adenocarcinoma cell line) Whole Cell Lysate

**Lane 4 :** HeLa (Human epithelial carcinoma cell line) Whole Cell Lysate

**Lane 5 :** Human Platelet (Human adult normal cell line) Whole Cell Lysate

Lysates/proteins at 10 µg per lane.

### Secondary

**All lanes :** Goat Anti-Rabbit IgG H&L (HRP) preadsorbed (**ab97080**) at 1/5000 dilution

Developed using the ECL technique.

Performed under reducing conditions.

**Predicted band size:** 21 kDa

**Observed band size:** 20 kDa

**Exposure time:** 90 seconds



Western blot - Anti-RhoA antibody (ab86297)

**All lanes :** Anti-RhoA antibody (ab86297) at 1 µg/ml

**Lane 1 :** Kidney (Mouse) Tissue Lysate

**Lane 2 :** Mouse lung normal tissue lysate - total protein ([ab29297](#))

**Lane 3 :** Kidney (Rat) Tissue Lysate

**Lane 4 :** Lung (Rat) Tissue Lysate

Lysates/proteins at 10 µg per lane.

### Secondary

**All lanes :** Goat Anti-Rabbit IgG H&L (HRP) preadsorbed ([ab97080](#)) at 1/5000 dilution

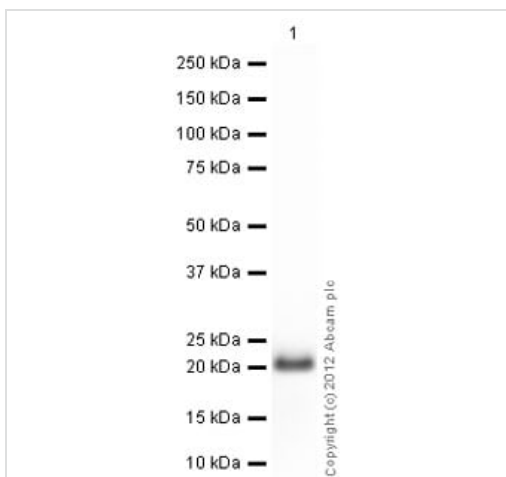
Developed using the ECL technique.

Performed under reducing conditions.

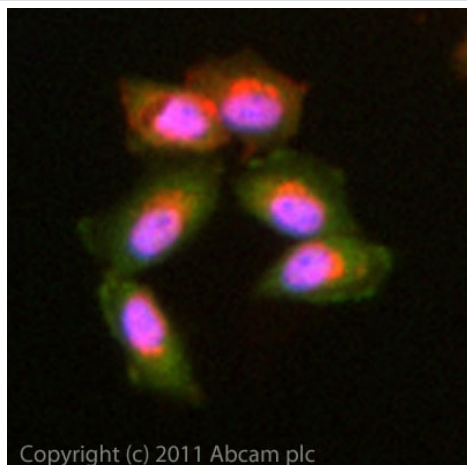
**Predicted band size:** 21 kDa

**Observed band size:** 20 kDa

**Exposure time:** 2 minutes



Western blot - Anti-RhoA antibody (ab86297)



Immunocytochemistry/ Immunofluorescence - Anti-RhoA antibody (ab86297)

ICC/IF image of ab86297 stained MCF7 cells. The cells were 4% PFA fixed (10 min) and then incubated in 1%BSA / 10% normal goat serum / 0.3M glycine in 0.1% PBS-Tween for 1h to permeabilise the cells and block non-specific protein-protein interactions. The cells were then incubated with the antibody (ab86297, 10µg/ml) overnight at +4°C. The secondary antibody (green) was **ab96899** Dylight 488 goat anti-rabbit IgG (H+L) used at a 1/250 dilution for 1h. Alexa Fluor® 594 WGA was used to label plasma membranes (red) at a 1/200 dilution for 1h. DAPI was used to stain the cell nuclei (blue) at a concentration of 1.43µM.

**Please note:** All products are "FOR RESEARCH USE ONLY. NOT FOR USE IN DIAGNOSTIC PROCEDURES"

### Our Abpromise to you: Quality guaranteed and expert technical support

- Replacement or refund for products not performing as stated on the datasheet
- Valid for 12 months from date of delivery
- Response to your inquiry within 24 hours
- We provide support in Chinese, English, French, German, Japanese and Spanish
- Extensive multi-media technical resources to help you
- We investigate all quality concerns to ensure our products perform to the highest standards

If the product does not perform as described on this datasheet, we will offer a refund or replacement. For full details of the Abpromise, please visit <https://www.abcam.cn/abpromise> or contact our technical team.

### Terms and conditions

- Guarantee only valid for products bought direct from Abcam or one of our authorized distributors