

### Anti-RhoA antibody [1B12] ab54835

★★★★★ [16 Abreviews](#) [77 References](#) [6 图像](#)

#### 概述

产品名称	Anti-RhoA抗体[1B12]
描述	小鼠单克隆抗体[1B12] to RhoA
宿主	Mouse
经测试应用	适用于: WB, IHC-P, Flow Cyt, ICC/IF
种属反应性	与反应: Human
免疫原	Recombinant full length protein corresponding to Human RhoA aa 1-193. Database link: <a href="#">P61586</a>
阳性对照	WB: 293T, HL-60, lysate ICC/IF: HeLa cells. Flow cyt: HeLa cells. IHC-P: Human lymphoma tissue.
常规说明	<p>This product was changed from ascites to tissue culture supernatant on 15 May 2019. Please note that the dilutions may need to be adjusted accordingly. If you have any questions, please do not hesitate to contact our scientific support team.</p> <p>The Life Science industry has been in the grips of a reproducibility crisis for a number of years. Abcam is leading the way in addressing this with our range of recombinant monoclonal antibodies and knockout edited cell lines for gold-standard validation. Please check that this product meets your needs before purchasing.</p> <p>If you have any questions, special requirements or concerns, please send us an inquiry and/or contact our Support team ahead of purchase. Recommended alternatives for this product can be found below, along with publications, customer reviews and Q&amp;As</p>

#### 性能

形式	Liquid
存放说明	Shipped at 4°C. Store at +4°C short term (1-2 weeks). Upon delivery aliquot. Store at -20°C long term. Avoid freeze / thaw cycle.
存储溶液	pH: 7.40 Constituent: 100% PBS
纯度	Tissue culture supernatant
纯化说明	Purified from TCS.
克隆	单克隆

克隆编号	1B12
同种型	IgG1
轻链类型	lambda

应用

The Abpromise guarantee

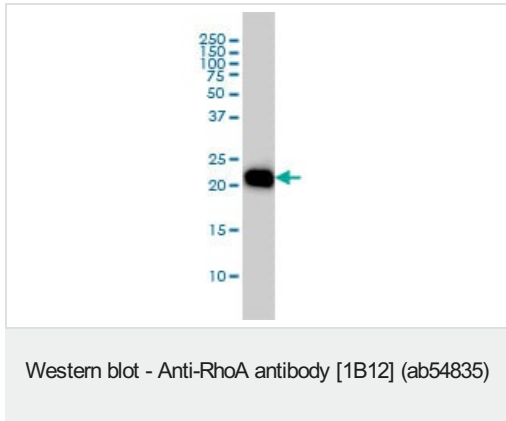
Abpromise™承诺保证使用ab54835于以下的经测试应用

“应用说明”部分 下显示的仅为推荐的起始稀释度;实际最佳的稀释度/浓度应由使用者检定。

应用	Ab评论	说明
WB	★★★★★ (11)	Use at an assay dependent concentration. Predicted molecular weight: 22 kDa.
IHC-P	★★★★★ (1)	Use at an assay dependent concentration.
Flow Cyt		Use at an assay dependent concentration. <b>ab170190</b> - Mouse monoclonal IgG1, is suitable for use as an isotype control with this antibody.
ICC/IF	★★★★★ (2)	Use at an assay dependent concentration.

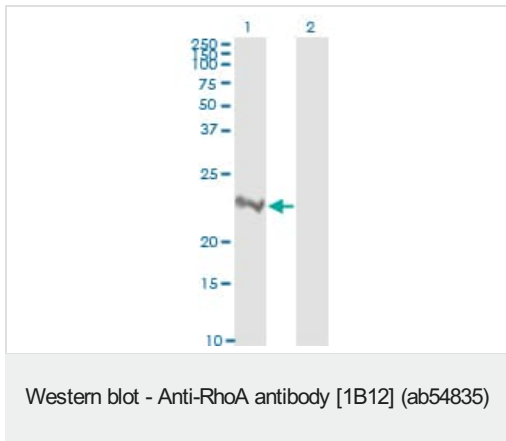
靶标

功能	Regulates a signal transduction pathway linking plasma membrane receptors to the assembly of focal adhesions and actin stress fibers. Serves as a target for the yopT cysteine peptidase from Yersinia pestis, vector of the plague, and Yersinia pseudotuberculosis, which causes gastrointestinal disorders. May be an activator of PLCE1. Activated by ARHGEF2, which promotes the exchange of GDP for GTP.
序列相似性	Belongs to the small GTPase superfamily. Rho family.
结构域	The basic-rich region is essential for yopT recognition and cleavage.
翻译后修饰	Substrate for botulinum ADP-ribosyltransferase. Cleaved by yopT protease when the cell is infected by some Yersinia pathogens. This removes the lipid attachment, and leads to its displacement from plasma membrane and to subsequent cytoskeleton cleavage. AMPylation at Tyr-34 and Thr-37 are mediated by bacterial enzymes in case of infection by H.somnus and V.parahaemolyticus, respectively. AMPylation occurs in the effector region and leads to inactivation of the GTPase activity by preventing the interaction with downstream effectors, thereby inhibiting actin assembly in infected cells. It is unclear whether some human enzyme mediates AMPylation; FICD has such ability in vitro but additional experiments remain to be done to confirm results in vivo. Ubiquitinated by the BCR(BACURD1) and BCR(BACURD2) E3 ubiquitin ligase complexes, leading to its degradation by the proteasome, thereby regulating the actin cytoskeleton and cell migration.
细胞定位	Cell membrane. Cytoplasm > cytoskeleton.



RhoA antibody (ab54835) at 1ug/lane + HL-60 cell lysate  
(**ab7914**) at 25ug/lane.

This image was generated using the ascites version of the product.



**All lanes** : Anti-RhoA antibody [1B12] (ab54835) at 1  $\mu$ g

**Lane 1** : RHOA transfected 293T lysate

**Lane 2** : Non-transfected lysate

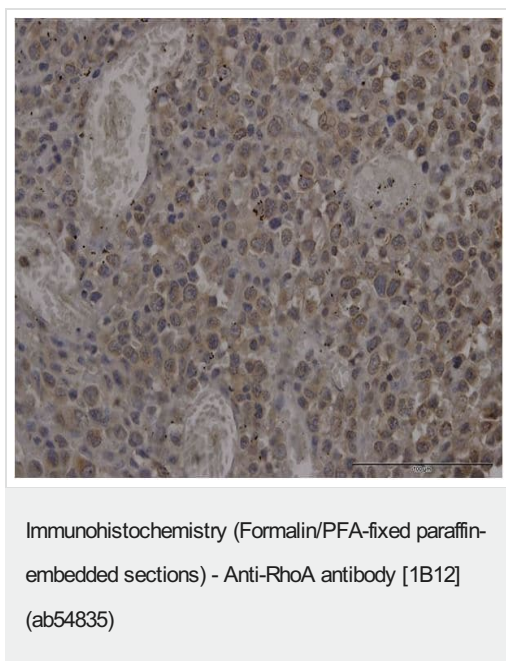
Lysates/proteins at 25  $\mu$ g per lane.

**Secondary**

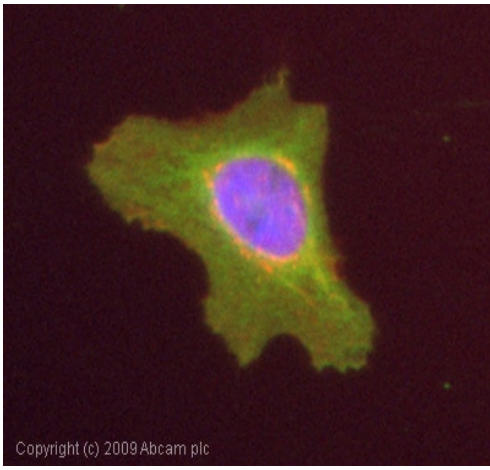
**All lanes** : Goat anti-mouse IgG

**Predicted band size:** 22 kDa

This image was generated using the ascites version of the product.



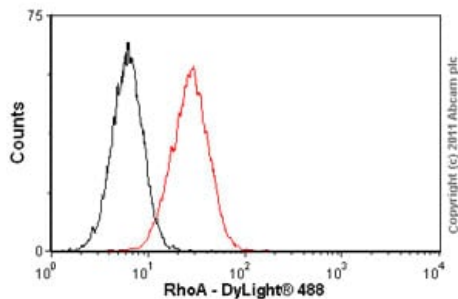
Paraffin embedded human lymphoma tissue stained for RhoA using ab54835 at 5  $\mu$ g/ml in immunohistochemical analysis.



Immunocytochemistry/ Immunofluorescence - Anti-RhoA antibody [1B12] (ab54835)

ICC/IF image of ab54835 stained HeLa cells (**ab150035**). The cells were 4% PFA fixed (10 min) and then incubated in 1%BSA / 10% normal goat serum / 0.3M glycine in 0.1% PBS-Tween for 1h to permeabilise the cells and block non-specific protein-protein interactions. The cells were then incubated with the antibody (ab54835, 1µg/ml) overnight at +4°C. The secondary antibody (green) was Alexa Fluor® 488 goat anti-mouse IgG (H+L) used at a 1/1000 dilution for 1h. Alexa Fluor® 594 WGA was used to label plasma membranes (red) at a 1/200 dilution for 1h. DAPI was used to stain the cell nuclei (blue) at a concentration of 1.43µM.

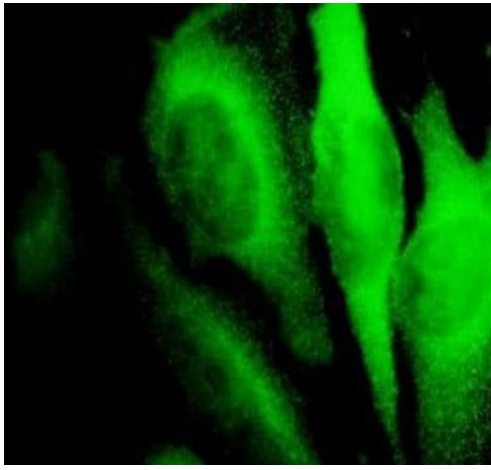
This image was generated using the ascites version of the product.



Flow Cytometry - Anti-RhoA antibody [1B12] (ab54835)

Overlay histogram showing HeLa cells (**ab150035**) stained with ab54835 (red line). The cells were fixed with methanol (5 min) and then permeabilized with 0.1% PBS-Tween for 20 min. The cells were then incubated in 1x PBS / 10% normal goat serum / 0.3M glycine to block non-specific protein-protein interactions followed by the antibody (ab54835, 1µg/1x10<sup>6</sup> cells) for 30 min at 22°C. The secondary antibody used was DyLight® 488 goat anti-mouse IgG (H+L) (**ab96879**) at 1/500 dilution for 30 min at 22°C. Isotype control antibody (black line) was mouse IgG1 [ICIGG1] (**ab91353**, 2µg/1x10<sup>6</sup> cells) used under the same conditions. Acquisition of >5,000 events was performed. This antibody gave a decreased signal in HeLa cells fixed with 4% paraformaldehyde (10 min)/permeabilized in 0.1% PBS-Tween used under the same conditions.

This image was generated using the ascites version of the product.



Immunocytochemistry/ Immunofluorescence - Anti-RhoA antibody [1B12] (ab54835)

ab54835 at 10 ug/ml staining RhoA in human Hela cells  
(**ab150035**) by Immunocytochemistry / Immunofluorescence.

This image was generated using the ascites version of the product.

**Please note:** All products are "FOR RESEARCH USE ONLY. NOT FOR USE IN DIAGNOSTIC PROCEDURES"

#### Our Abpromise to you: Quality guaranteed and expert technical support

---

- Replacement or refund for products not performing as stated on the datasheet
- Valid for 12 months from date of delivery
- Response to your inquiry within 24 hours
- We provide support in Chinese, English, French, German, Japanese and Spanish
- Extensive multi-media technical resources to help you
- We investigate all quality concerns to ensure our products perform to the highest standards

If the product does not perform as described on this datasheet, we will offer a refund or replacement. For full details of the Abpromise, please visit <https://www.abcam.cn/abpromise> or contact our technical team.

#### Terms and conditions

---

- Guarantee only valid for products bought direct from Abcam or one of our authorized distributors