

### Anti-RHEB antibody ab109914

#### 1 图像

#### 概述

|       |   |
|-------|---|
| 产品名称  | Anti-RHEB抗体   |
| 描述    | 兔多克隆抗体to RHEB   |
| 宿主    | Rabbit  |
| 经测试应用 | 适用于: WB   |
| 种属反应性 | 与反应: Human<br>预测可用于: Rat, Rabbit, Horse, Cow, Pig, Chimpanzee, Macaque monkey, Gorilla   |
| 免疫原   | Synthetic peptide. This information is proprietary to Abcam and/or its suppliers.   |
| 阳性对照  | This antibody gave a positive signal in the following whole cell lysates: Raji; SHSY5Y; EGF treated A431; Jurkat.   |
| 常规说明  | <p>The Life Science industry has been in the grips of a reproducibility crisis for a number of years. Abcam is leading the way in addressing this with our range of recombinant monoclonal antibodies and knockout edited cell lines for gold-standard validation. Please check that this product meets your needs before purchasing.</p> <p>If you have any questions, special requirements or concerns, please send us an inquiry and/or contact our Support team ahead of purchase. Recommended alternatives for this product can be found below, along with publications, customer reviews and Q&amp;As</p> |

#### 性能

|      |  |
|------|--|
| 形式   | Liquid   |
| 存放说明 | Shipped at 4°C. Store at +4°C short term (1-2 weeks). Upon delivery aliquot. Store at -20°C or -80°C. Avoid freeze / thaw cycle.   |
| 存储溶液 | pH: 7.40<br>Preservative: 0.02% Sodium azide<br>Constituent: PBS<br><br>Batches of this product that have a concentration < 1mg/ml may have BSA added as a stabilising agent. If you would like information about the formulation of a specific lot, please contact our scientific support team who will be happy to help. |
| 纯度   | Immunogen affinity purified  |
| 克隆   | 多克隆  |

同种型lgG

应用

The Abpromise guarantee      Abpromise™承诺保证使用ab109914于以下的经测试应用

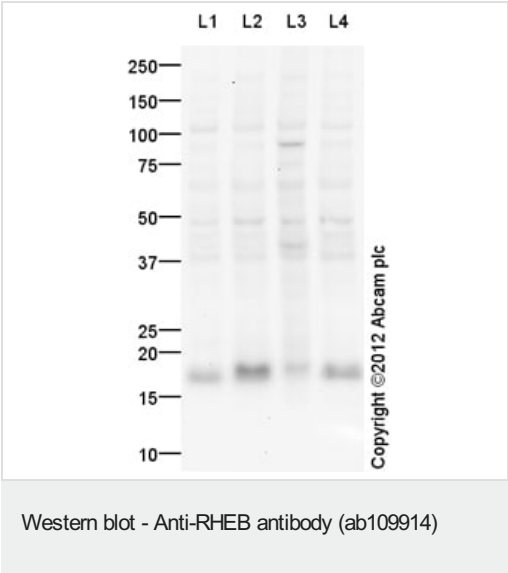
“应用说明”部分 下显示的仅为推荐的起始稀释度;实际最佳的稀释度/浓度应由使用者检定。

| 应用 | Ab评论 | 说明   |
|----|------|--|
| WB |      | Use a concentration of 1 µg/ml. Detects a band of approximately 18 kDa (predicted molecular weight: 20 kDa). |

靶标

|       |   |
|-------|---|
| 功能    | Stimulates the phosphorylation of S6K1 and EIF4EBP1 through activation of mTORC1 signaling. Activates the protein kinase activity of mTORC1. Has low intrinsic GTPase activity. |
| 组织特异性 | Ubiquitous. Highest levels observed in skeletal and cardiac muscle.   |
| 序列相似性 | Belongs to the small GTPase superfamily. Rheb family.   |
| 翻译后修饰 | Farnesylation is important for efficiently activating mTORC1-mediated signaling.  |
| 细胞定位  | Cell membrane.  |

图片



All lanes : Anti-RHEB antibody (ab109914) at 1 µg/ml

Lane 1 : Raji (Human Burkitt's lymphoma cell line) Whole Cell Lysate

Lane 2 : SHSY-5Y (Human neuroblastoma cell line) Whole Cell Lysate

Lane 3 : EGF-Stimulated A431 Whole Cell Lysate

Lane 4 : Jurkat (Human T cell lymphoblast-like cell line) Whole Cell Lysate

Lysates/proteins at 10 µg per lane.

Secondary

All lanes : Goat Anti-Rabbit IgG H&L (HRP) (ab97051) at 1/10000 dilution

Developed using the ECL technique.

Performed under reducing conditions.

**Predicted band size:** 20 kDa

**Observed band size:** 18 kDa

**Additional bands at:** 42 kDa, 49 kDa, 95 kDa. We are unsure as to the identity of these extra bands.

**Exposure time:** 20 minutes

This blot was produced using a 4-12% Bis-tris gel under the MES buffer system. The gel was run at 200V for 35 minutes before being transferred onto a Nitrocellulose membrane at 30V for 70 minutes. The membrane was then blocked for an hour using 5% Bovine Serum Albumin before being incubated with ab109914 overnight at 4°C. Antibody binding was detected using an anti-rabbit antibody conjugated to HRP, and visualised using ECL development solution.

**Please note:** All products are "FOR RESEARCH USE ONLY. NOT FOR USE IN DIAGNOSTIC PROCEDURES"

#### **Our Abpromise to you: Quality guaranteed and expert technical support**

---

- Replacement or refund for products not performing as stated on the datasheet
- Valid for 12 months from date of delivery
- Response to your inquiry within 24 hours
- We provide support in Chinese, English, French, German, Japanese and Spanish
- Extensive multi-media technical resources to help you
- We investigate all quality concerns to ensure our products perform to the highest standards

If the product does not perform as described on this datasheet, we will offer a refund or replacement. For full details of the Abpromise, please visit <https://www.abcam.cn/abpromise> or contact our technical team.

#### **Terms and conditions**

---

- Guarantee only valid for products bought direct from Abcam or one of our authorized distributors