


Anti-RGS19 antibody ab229253

1 图像

概述

产品名称	Anti-RGS19抗体
描述	兔多克隆抗体to RGS19
宿主	Rabbit
经测试应用	适用于: WB
种属反应性	与反应: Human 预测可用于: Rhesus monkey 
免疫原	Recombinant fragment within Human RGS19. The exact sequence is proprietary. Database link: P49795
阳性对照	WB: RGS19-transfected HEK-293T whole cell lysate.
常规说明	<p>The Life Science industry has been in the grips of a reproducibility crisis for a number of years. Abcam is leading the way in addressing this with our range of recombinant monoclonal antibodies and knockout edited cell lines for gold-standard validation. Please check that this product meets your needs before purchasing.</p> <p>If you have any questions, special requirements or concerns, please send us an inquiry and/or contact our Support team ahead of purchase. Recommended alternatives for this product can be found below, along with publications, customer reviews and Q&As</p>

性能

形式	Liquid
存放说明	Shipped at 4°C. Store at +4°C short term (1-2 weeks). Upon delivery aliquot. Store at -20°C long term. Avoid freeze / thaw cycle.
存储溶液	pH: 7.00 Preservative: 0.025% Proclin 300 Constituents: 79% PBS, 20% Glycerol (glycerin, glycerine)
纯度	Immunogen affinity purified
克隆	多克隆
同种型	IgG

应用

The Abpromise guarantee

Abpromise™ 承诺保证使用ab229253于以下的经测试应用

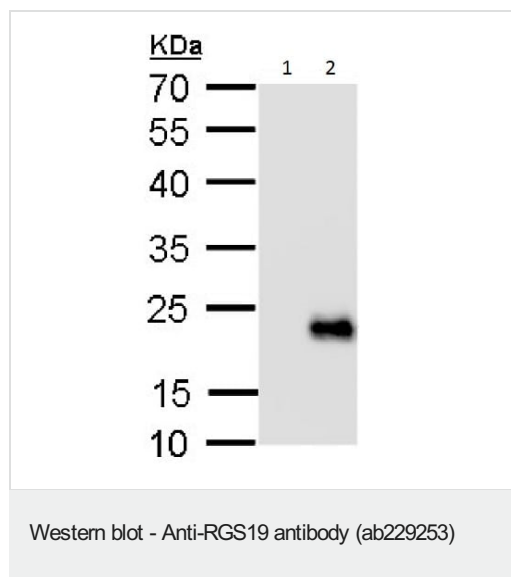
“应用说明”部分 下显示的仅为推荐的起始稀释度;实际最佳的稀释度/浓度应由使用者检定。

应用	Ab评论	说明
WB		1/5000 - 1/20000. Predicted molecular weight: 25 kDa.

靶标

功能	Inhibits signal transduction by increasing the GTPase activity of G protein alpha subunits thereby driving them into their inactive GDP-bound form. Binds to G-alpha subfamily 1 members, with the order G(i)a3 > G(i)a1 > G(o)a >> G(z)a/G(i)a2. Activity on G(z)-alpha is inhibited by phosphorylation and palmitoylation of the G-protein.
组织特异性	Highest expression in lung. Placenta, liver and heart also express high levels of GAIP.
序列相似性	Contains 1 RGS domain.
翻译后修饰	Fatty acylated. Heavily palmitoylated in the cysteine string motif. Phosphorylated, mainly on serine residues.
细胞定位	Membrane.

图片



All lanes : Anti-RGS19 antibody (ab229253) at 1/10000 dilution

Lane 1 : HEK-293T whole cell lysate

Lane 2 : RGS19-transfected HEK-293T whole cell lysate

Lysates/proteins at 30 µg per lane.

Developed using the ECL technique.

Predicted band size: 25 kDa

12% SDS-PAGE

Please note: All products are "FOR RESEARCH USE ONLY. NOT FOR USE IN DIAGNOSTIC PROCEDURES"

Our Abpromise to you: Quality guaranteed and expert technical support

- Replacement or refund for products not performing as stated on the datasheet
- Valid for 12 months from date of delivery

- Response to your inquiry within 24 hours
- We provide support in Chinese, English, French, German, Japanese and Spanish
- Extensive multi-media technical resources to help you
- We investigate all quality concerns to ensure our products perform to the highest standards

If the product does not perform as described on this datasheet, we will offer a refund or replacement. For full details of the Abpromise, please visit <https://www.abcam.cn/abpromise> or contact our technical team.

Terms and conditions

- Guarantee only valid for products bought direct from Abcam or one of our authorized distributors