

# Anti-RFWD3 antibody ab99306

**1 References**   [1 图像](#)

### 概述

产品名称	Anti-RFWD3抗体
描述	兔多克隆抗体to RFWD3
宿主	Rabbit
经测试应用	适用于: IP
种属反应性	与反应: Human
免疫原	Immunogen corresponds to a region within amino acids 75-125 of Human RFWD3 (NP_060594.3).
阳性对照	Hela whole cell lysate
常规说明	<p>The Life Science industry has been in the grips of a reproducibility crisis for a number of years. Abcam is leading the way in addressing this with our range of recombinant monoclonal antibodies and knockout edited cell lines for gold-standard validation. Please check that this product meets your needs before purchasing.</p> <p>If you have any questions, special requirements or concerns, please send us an inquiry and/or contact our Support team ahead of purchase. Recommended alternatives for this product can be found below, along with publications, customer reviews and Q&amp;As</p>

### 性能

形式	Liquid
存放说明	Shipped at 4°C. Upon delivery aliquot and store at -20°C. Avoid freeze / thaw cycles.
存储溶液	<p>pH: 7</p> <p>Preservative: 0.09% Sodium azide</p> <p>Constituent: Tris citrate/phosphate</p>
纯度	Immunogen affinity purified
克隆	多克隆
同种型	IgG

### 应用

The Abpromise guarantee

**Abpromise™** 承诺保证使用ab99306于以下的经测试应用

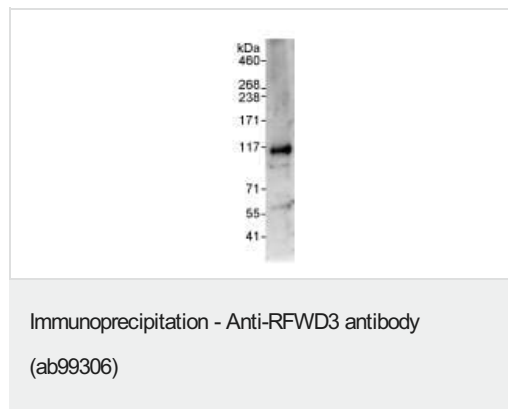
“应用说明”部分 下显示的仅为推荐的起始稀释度;实际最佳的稀释度/浓度应由使用者检定。

应用	Ab评论	说明
IP		Use at 2-5 µg/mg of lysate.

## 靶标

功能	E3 ubiquitin-protein ligase that mediates the ubiquitination of p53/TP53 in the late response to DNA damage, and acts as a positive regulator of p53/TP53 stability, thereby regulating the G1/S DNA damage checkpoint. May act by catalyzing the formation of short polyubiquitin chains on p53/TP53 that are not targeted to the proteasome. In response to ionizing radiation, interacts with MDM2 and enhances p53/TP53 ubiquitination, possibly by restricting MDM2 from extending polyubiquitin chains on ubiquitinated p53/TP53.
通路	Protein modification; protein ubiquitination.
序列相似性	Contains 1 RING-type zinc finger. Contains 3 WD repeats.
翻译后修饰	Phosphorylated at Ser-46 and Ser-63 upon DNA damage by ATM or ATR. ATM phosphorylation occurs at early times upon DNA damage, while ATR is the major kinase at later times. Phosphorylation by ATM and ATR is required to stabilize p53/TP53.
细胞定位	Nucleus.

## 图片



An anti RFWD3 antibody, at 1 µg/ml, staining RFWD3 in HeLa whole cell lysate immunoprecipitated using ab99306 at 3 µg/mg lysate (1 mg/IP; 20% of IP loaded/lane). Detection: Chemiluminescence with an exposure time of 30 seconds.

**Please note:** All products are "FOR RESEARCH USE ONLY. NOT FOR USE IN DIAGNOSTIC PROCEDURES"

## Our Abpromise to you: Quality guaranteed and expert technical support

- Replacement or refund for products not performing as stated on the datasheet
- Valid for 12 months from date of delivery
- Response to your inquiry within 24 hours
- We provide support in Chinese, English, French, German, Japanese and Spanish
- Extensive multi-media technical resources to help you

- We investigate all quality concerns to ensure our products perform to the highest standards

If the product does not perform as described on this datasheet, we will offer a refund or replacement. For full details of the Abpromise, please visit <https://www.abcam.cn/abpromise> or contact our technical team.

#### **Terms and conditions**

---

- Guarantee only valid for products bought direct from Abcam or one of our authorized distributors