

# Anti-RFP antibody ab152123

[3 References](#) [3 图像](#)

### 概述

产品名称	Anti-RFP抗体
描述	兔多克隆抗体to RFP
宿主	Rabbit
经测试应用	适用于: WB, IP, ICC/IF
种属反应性	与反应: Species independent
免疫原	Recombinant full length RFP.
阳性对照	RFP-transfected HeLa cells; RFP-transfected 293T lysate.
常规说明	<p>The Life Science industry has been in the grips of a reproducibility crisis for a number of years. Abcam is leading the way in addressing this with our range of recombinant monoclonal antibodies and knockout edited cell lines for gold-standard validation. Please check that this product meets your needs before purchasing.</p> <p>If you have any questions, special requirements or concerns, please send us an inquiry and/or contact our Support team ahead of purchase. Recommended alternatives for this product can be found below, along with publications, customer reviews and Q&amp;As</p>

### 性能

形式	Liquid
存放说明	Shipped at 4°C. Upon delivery aliquot. Store at -20°C or -80°C. Avoid freeze / thaw cycle.
存储溶液	pH: 7 Preservative: 0.01% Thimerosal (merthiolate) Constituents: 1.21% Tris, 0.75% Glycine, 20% Glycerol (glycerin, glycerine)
纯度	Immunogen affinity purified
克隆	多克隆
同种型	IgG

### 应用

**The Abpromise guarantee** **Abpromise™**承诺保证使用ab152123于以下的经测试应用

“应用说明”部分 下显示的仅为推荐的起始稀释度;实际最佳的稀释度/浓度应由使用者检定。

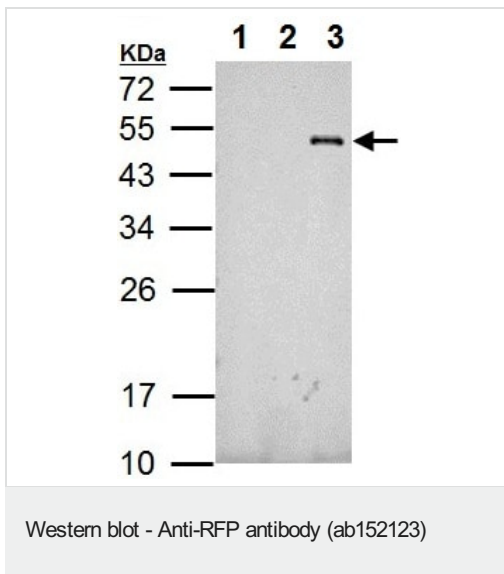
应用	Ab评论	说明
WB		1/5000 - 1/20000. Predicted molecular weight: 27 kDa.
IP		1/10000.
ICC/IF		1/5000.

## 靶标

## 相关性

Fluorescent proteins have become a useful and ubiquitous tool for making chimeric proteins, where they function as a fluorescent protein tag. Typically they tolerate N- and C-terminal fusion to a broad variety of proteins. They have been expressed in most known cell types and are used as a noninvasive fluorescent marker in living cells and organisms. They enable a wide range of applications where they have functioned as a cell lineage tracer, reporter of gene expression, or as a measure of protein-protein interactions.

## 图片



**All lanes :** Anti-RFP antibody (ab152123) at 1/10000 dilution

**Lane 1 :** Non-transfected 293T whole cell lysate

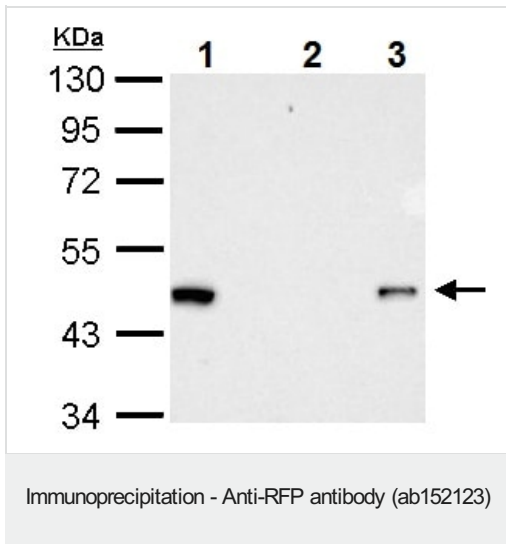
**Lane 2 :** GFP-transfected 293T whole cell lysate

**Lane 3 :** RFP-transfected 293T whole cell lysate

Lysates/proteins at 5 µg per lane.

**Predicted band size:** 27 kDa

12% SDS PAGE



Immunoprecipitation of RFP-tagged protein.

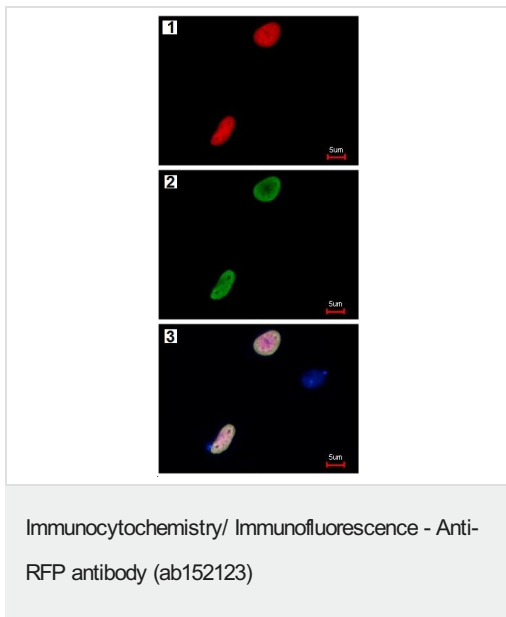
HeLa transfected lysates were subjected to immunoprecipitation using:

Lane 1: 15 µg of HeLa transfected lysate

Lane 2: normal rabbit IgG

Lane 3: 2.5 µg ab152123

Detection ab152123 at 1/10000 dilution



Immunofluorescence analysis of RFP-transfected HeLa cells

labeling RFP with ab152123: (1) RFP is expressed in the transfected cell, (2) The cell expressing RFP is detected using ab152123 at 1/5000 followed by Alexa Fluor 488 at 1/500 Goat anti-Rabbit IgG, (3) Merged with DNA probe, the lower cell represents a negative control.

**Please note:** All products are "FOR RESEARCH USE ONLY. NOT FOR USE IN DIAGNOSTIC PROCEDURES"

### Our Abpromise to you: Quality guaranteed and expert technical support

- Replacement or refund for products not performing as stated on the datasheet
- Valid for 12 months from date of delivery
- Response to your inquiry within 24 hours
- We provide support in Chinese, English, French, German, Japanese and Spanish
- Extensive multi-media technical resources to help you
- We investigate all quality concerns to ensure our products perform to the highest standards

If the product does not perform as described on this datasheet, we will offer a refund or replacement. For full details of the Abpromise, please visit <https://www.abcam.cn/abpromise> or contact our technical team.

### Terms and conditions

- Guarantee only valid for products bought direct from Abcam or one of our authorized distributors