

Anti-Reticulon 1A antibody [MON160] ab8957

3 References **3 图像**

概述

产品名称	Anti-Reticulon 1A抗体[MON160]
描述	小鼠单克隆抗体[MON160] to Reticulon 1A
宿主	Mouse
特异性	This antibody exclusively recognizes the 135 kDa Reticulon-1A protein in immunoblots of NCI-H82 and other SCLC cell lines, and stains normal and pathological neural and neuroendocrine tissues
经测试应用	适用于: IHC-P
种属反应性	与反应: Human
免疫原	Recombinant fragment within Reticulon 1A aa 1-800. The exact immunogen sequence used to generate this antibody is proprietary information. If additional detail on the immunogen is needed to determine the suitability of the antibody for your needs, please contact our Scientific Support team to discuss your requirements. Partially purified bacterially expressed Reticulon-1A (NSP-A) hybrid protein (beta-GAL-NSP-A 6-776). Database link: Q16799
表位	This antibody is reactive with residues 174-337 of Reticulon-1A.
常规说明	<p>A central structure in the secretory pathway of the cell comprises an elaborate endomembranous system with the multifunctional endoplasmic reticulum (ER) as a major constituent. Newly synthesized secretory proteins and a variety of resident proteins of the pathway enter the rough endoplasmic reticulum. Subsequently, the proteins may be sorted selectively to different membrane-delimited organelles including the Golgi apparatus, endosomes, lysosomes and secretory vesicles. Abcam provides antibodies to a new family of ER-associated proteins, the reticulons, which show a tissue specific distribution.</p> <p>The Life Science industry has been in the grips of a reproducibility crisis for a number of years. Abcam is leading the way in addressing this with our range of recombinant monoclonal antibodies and knockout edited cell lines for gold-standard validation. Please check that this product meets your needs before purchasing.</p> <p>If you have any questions, special requirements or concerns, please send us an inquiry and/or contact our Support team ahead of purchase. Recommended alternatives for this product can be found below, along with publications, customer reviews and Q&As</p>

性能

形式	Liquid
存放说明	Shipped at 4°C. Store at +4°C short term (1-2 weeks). Upon delivery aliquot. Store at -20°C or -80°C. Avoid freeze / thaw cycle.
存储溶液	Preservative: 0.09% Sodium azide Constituent: PBS
纯度	Protein G purified
Primary antibody说明	A central structure in the secretory pathway of the cell comprises an elaborate endomembranous system with the multifunctional endoplasmic reticulum (ER) as a major constituent. Newly synthesized secretory proteins and a variety of resident proteins of the pathway enter the rough endoplasmic reticulum. Subsequently, the proteins may be sorted selectively to different membrane-delimited organelles including the Golgi apparatus, endosomes, lysosomes and secretory vesicles. Abcam provides antibodies to a new family of ER-associated proteins, the reticulons, which show a tissue specific distribution.
克隆	单克隆
克隆编号	MON160
骨髓瘤	unknown
同种型	IgG1

应用

The Abpromise guarantee **Abpromise™**承诺保证使用ab8957于以下的经测试应用

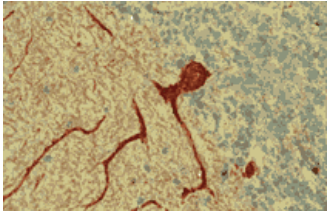
“应用说明”部分 下显示的仅为推荐的起始稀释度;实际最佳的稀释度/浓度应由使用者检定。

应用	Ab评论	说明
IHC-P		Use at an assay dependent concentration. Recommended range is 1/50 - 1/100 for immunohistochemistry with avidin-biotinylated horseradish peroxidase complex (ABC) as detection reagent.

靶标

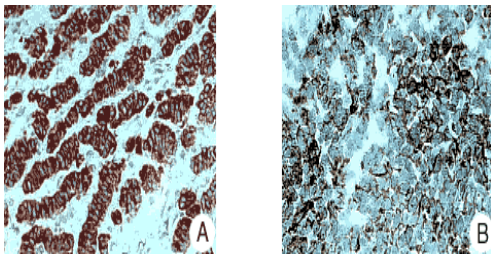
相关性	Reticulon 1A may be involved in neuroendocrine secretion or in membrane trafficking in neuroendocrine cells. It is expressed in neural and neuroendocrine tissues and cell cultures derived therefrom. Expression of isoform RTN1-C is strongly correlated with neuronal differentiation. Different isoforms have been described as a result of alternative splicing.
细胞定位	Endoplasmic reticulum

图片



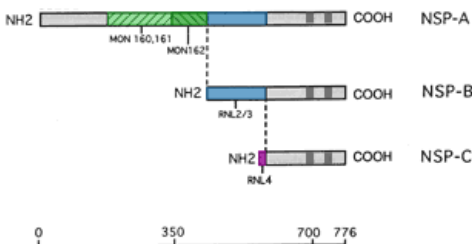
NSP-A immunostaining in human cerebellum using ab8957.

Immunohistochemistry (Formalin/PFA-fixed paraffin-embedded sections) - Anti-Reticulon 1A antibody
[MON160] (ab8957)



Human carcinoid (A) and small cell lung carcinoma (B) in paraffin sections, immunostained for NSP-A with ab8957.

Immunohistochemistry (Formalin/PFA-fixed paraffin-embedded sections) - Anti-Reticulon 1A antibody
[MON160] (ab8957)



Schematic representation of the deduced domain structure of the three NSP-gene encoded proteins, NSP-A, NSP-B and NSP-C and mapping of the epitopes recognized by the different NSP monoclonal antibodies.

Schematic Diagram - Anti-Reticulon 1A antibody
[MON160] (ab8957)

Please note: All products are "FOR RESEARCH USE ONLY. NOT FOR USE IN DIAGNOSTIC PROCEDURES"

Our Abpromise to you: Quality guaranteed and expert technical support

- Replacement or refund for products not performing as stated on the datasheet
- Valid for 12 months from date of delivery
- Response to your inquiry within 24 hours

- We provide support in Chinese, English, French, German, Japanese and Spanish
- Extensive multi-media technical resources to help you
- We investigate all quality concerns to ensure our products perform to the highest standards

If the product does not perform as described on this datasheet, we will offer a refund or replacement. For full details of the Abpromise, please visit <https://www.abcam.cn/abpromise> or contact our technical team.

Terms and conditions

- Guarantee only valid for products bought direct from Abcam or one of our authorized distributors