

Anti-Respiratory Syncytial Virus antibody [2F7] ab43812

16 References **1 图像**

概述

产品名称	Anti-Respiratory Syncytial Virus抗体[2F7]
描述	小鼠单克隆抗体[2F7] to Respiratory Syncytial Virus
宿主	Mouse
经测试应用	适用于: WB, IHC-Fr, ICC/IF, ELISA
种属反应性	与反应: Respiratory syncytial virus
免疫原	Recombinant FP
常规说明	<p>The Life Science industry has been in the grips of a reproducibility crisis for a number of years. Abcam is leading the way in addressing this with our range of recombinant monoclonal antibodies and knockout edited cell lines for gold-standard validation. Please check that this product meets your needs before purchasing.</p> <p>If you have any questions, special requirements or concerns, please send us an inquiry and/or contact our Support team ahead of purchase. Recommended alternatives for this product can be found below, along with publications, customer reviews and Q&As</p>

性能

形式	Liquid
存放说明	Shipped at 4°C. Store at +4°C short term (1-2 weeks). Upon delivery aliquot. Store at -20°C or -80°C. Avoid freeze / thaw cycle.
存储溶液	Constituents: 0.75% Glycine, 1.21% Tris, 2% Sucrose
纯度	Protein A purified
克隆	单克隆
克隆编号	2F7
同种型	IgG1
轻链类型	kappa

应用

The Abpromise guarantee

Abpromise™ 承诺保证使用ab43812于以下的经测试应用

“应用说明”部分 下显示的仅为推荐的起始稀释度;实际最佳的稀释度/浓度应由使用者检定。

应用	Ab评论	说明
WB		1/500 - 1/5000. Predicted molecular weight: 48 , 70 kDa.
IHC-Fr		1/100 - 1/500.
ICC/IF		1/100 - 1/500. Immunocytology on infected cells.
ELISA		1/1000 - 1/2000.

靶标

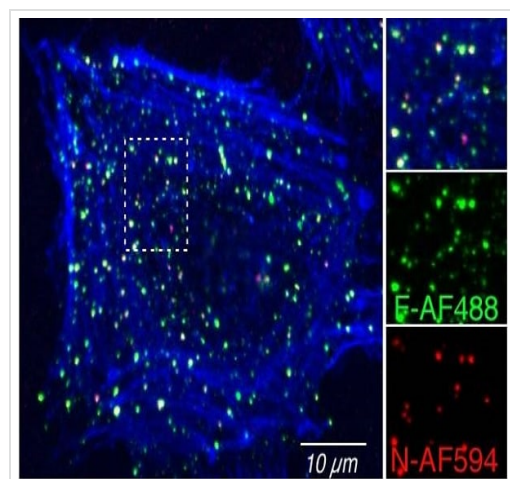
相关性

Respiratory syncytial virus (RSV) is a major cause of respiratory illness in young children. RSV infection produces a variety of signs and symptoms involving different areas of the respiratory tract, from the nose to the lungs. RSV is a negative sense, enveloped RNA virus. The virion is variable in shape and size with average diameter of between 120 and 300 nm. The 63 kD RSV fusion protein of the RSS 2 strain (subtype A) directs fusion of viral and cellular membranes, results in viral penetration, and can direct fusion of infected cells with adjoining cells, resulting in the formation of syncytia or multi nucleated giant cells.

细胞定位

Virion. Host cytoplasm

图片



Immunofluorescent staining of Respiratory Syncytial Virus F protein Bound to HeLa cells using ab43812. Respiratory Syncytial Virus F protein was visualized in green and Respiratory Syncytial N protein in red.

Immunocytochemistry/ Immunofluorescence - Anti-Respiratory Syncytial Virus antibody [2F7] (ab43812)

Image from Krzyzaniak MA et al., PLoS Pathogens. 2013;9(4):e1003309. Fig 2.; doi: 10.1371/journal.ppat.1003309 Reproduced under the Creative Commons license <http://creativecommons.org/licenses/by/4.0/>

Please note: All products are "FOR RESEARCH USE ONLY. NOT FOR USE IN DIAGNOSTIC PROCEDURES"

Our Abpromise to you: Quality guaranteed and expert technical support

- Replacement or refund for products not performing as stated on the datasheet
- Valid for 12 months from date of delivery
- Response to your inquiry within 24 hours

- We provide support in Chinese, English, French, German, Japanese and Spanish
- Extensive multi-media technical resources to help you
- We investigate all quality concerns to ensure our products perform to the highest standards

If the product does not perform as described on this datasheet, we will offer a refund or replacement. For full details of the Abpromise, please visit <https://www.abcam.cn/abpromise> or contact our technical team.

Terms and conditions

- Guarantee only valid for products bought direct from Abcam or one of our authorized distributors