


Anti-Reptin/TIP49B/RUVB2 antibody ab36569

★★★★★ [13 Abreviews](#) [16 References](#) [4 图像](#)

概述

产品名称	Anti-Reptin/TIP49B/RUVB2抗体
描述	兔多克隆抗体to Reptin/TIP49B/RUVB2
宿主	Rabbit
经测试应用	适用于: WB, ICC/IF
种属反应性	与反应: Human, Zebrafish 预测可用于: Mouse, Rat, Cow, Xenopus laevis 
免疫原	Synthetic peptide corresponding to Human Reptin/TIP49B/RUVB2 aa 300-400 conjugated to keyhole limpet haemocyanin. (Peptide available as ab36568)
常规说明	<p>The Life Science industry has been in the grips of a reproducibility crisis for a number of years. Abcam is leading the way in addressing this with our range of recombinant monoclonal antibodies and knockout edited cell lines for gold-standard validation. Please check that this product meets your needs before purchasing.</p> <p>If you have any questions, special requirements or concerns, please send us an inquiry and/or contact our Support team ahead of purchase. Recommended alternatives for this product can be found below, along with publications, customer reviews and Q&As</p>

性能

形式	Liquid
存放说明	Shipped at 4°C. Store at +4°C short term (1-2 weeks). Upon delivery aliquot. Store at -20°C or -80°C. Avoid freeze / thaw cycle.
存储溶液	pH: 7.40 Preservative: 0.02% Sodium azide Constituent: PBS Batches of this product that have a concentration < 1mg/ml may have BSA added as a stabilising agent. If you would like information about the formulation of a specific lot, please contact our scientific support team who will be happy to help.
纯度	Immunogen affinity purified
克隆	多克隆

同种型

IgG

应用

The Abpromise guarantee

Abpromise™承诺保证使用ab36569于以下的经测试应用

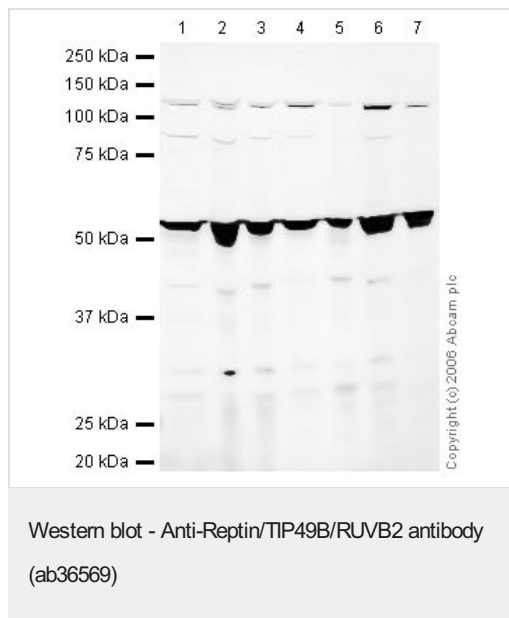
“应用说明”部分 下显示的仅为推荐的起始稀释度;实际最佳的稀释度/浓度应由使用者检定。

应用	Ab评论	说明
WB	★★★★★ (8)	Use a concentration of 1 µg/ml. Detects a band of approximately 52 kDa (predicted molecular weight: 50 kDa).
ICC/IF	★★★★★ (2)	Use a concentration of 1 µg/ml.

靶标

功能	Possesses single-stranded DNA-stimulated ATPase and ATP-dependent DNA helicase (5' to 3') activity. Component of the NuA4 histone acetyltransferase complex which is involved in transcriptional activation of select genes principally by acetylation of nucleosomal histones H4 and H2A. This modification may both alter nucleosome - DNA interactions and promote interaction of the modified histones with other proteins which positively regulate transcription. This complex may be required for the activation of transcriptional programs associated with oncogene and proto-oncogene mediated growth induction, tumor suppressor mediated growth arrest and replicative senescence, apoptosis, and DNA repair. The NuA4 complex ATPase and helicase activities seem to be, at least in part, contributed by the association of RUVBL1 and RUVBL2 with EP400. NuA4 may also play a direct role in DNA repair when recruited to sites of DNA damage. RUVBL2 plays an essential role in oncogenic transformation by MYC and also modulates transcriptional activation by the LEF1/TCF1-CTNNB1 complex. May also inhibit the transcriptional activity of ATF2.
组织特异性	Ubiquitously expressed. Highly expressed in testis and thymus.
序列相似性	Belongs to the ruvB family.
结构域	The C-terminal domain is required for association with ATF2.
翻译后修饰	Phosphorylated upon DNA damage, probably by ATM or ATR.
细胞定位	Nucleus matrix. Nucleus > nucleoplasm. Cytoplasm. Membrane. Mainly localized in the nucleus, associated with nuclear matrix or in the nuclear cytosol. Although it is also present in the cytoplasm and associated with the cell membranes.

图片



All lanes : Anti-Reptin/TIP49B/RUVB2 antibody (ab36569) at 1 µg/ml

Lane 1 : HeLa (Human epithelial carcinoma cell line) Whole Cell Lysate

Lane 2 : Jurkat whole cell lysate ([ab7899](#))

Lane 3 : A-431 whole cell lysate ([ab7909](#))

Lane 4 : HEK-293 whole cell lysate ([ab7902](#))

Lane 5 : Hep G2 whole cell lysate ([ab7900](#))

Lane 6 : MCF-7 (Human breast adenocarcinoma cell line) Whole Cell Lysate

Lane 8 : U2OS Whole Cell Lysate

Lysates/proteins at 10 µg per lane.

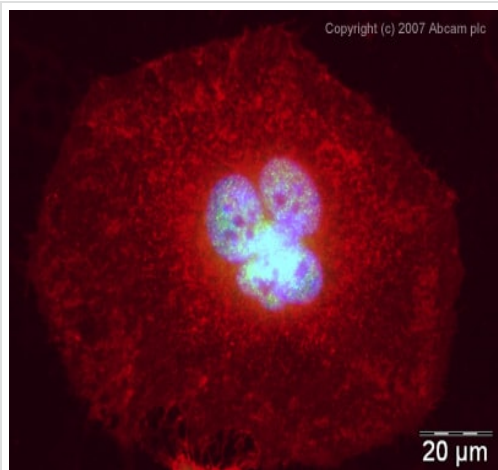
Secondary

All lanes : IRDye 680 Conjugated Goat Anti-Rabbit IgG (H+L) at 1/15000 dilution

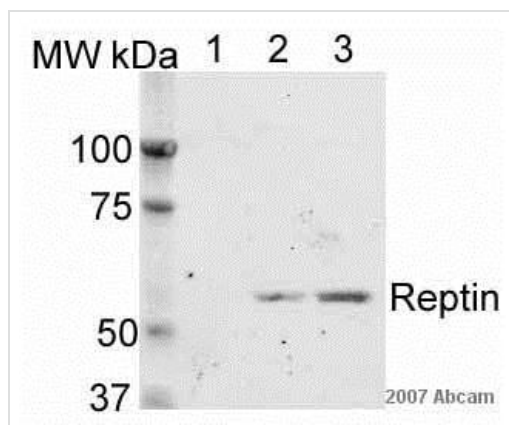
Performed under reducing conditions.

Predicted band size: 50 kDa

Observed band size: 52 kDa



Immunocytochemistry/ Immunofluorescence - Anti-Reptin/TIP49B/RUVB2 antibody (ab36569)



Western blot - Anti-Reptin/TIP49B/RUVB2 antibody (ab36569)

This image is courtesy of an anonymous Abreview

ICC/IF image of ab36569 stained human HeLa cells. The cells were PFA fixed (10 min) and incubated with the antibody (ab36569, 1 μg/ml) for 1h at room temperature. The secondary antibody (green) was Alexa Fluor® 488 goat anti-rabbit IgG (H+L) used at a 1/1000 dilution for 1h. Image-iT™ FX Signal Enhancer was used to quench autofluorescence. 5% BSA (in TBS-T) was used for all other blocking steps. DAPI was used to stain the cell nuclei (blue). Alexa Fluor® 594 WGA was used to label plasma membranes (red).

All lanes : Anti-Reptin/TIP49B/RUVB2 antibody (ab36569) at 1 μg/ml

Lane 1 : HeLa cells treated with reptin-specific siRNA#1, whole cell lysate

Lane 2 : HeLa cells treated with reptin-specific siRNA#2, whole cell lysate

Lane 3 : HeLa cells treated with non-specific siRNA, whole cell lysate

Lysates/proteins at 20 μg per lane.

Secondary

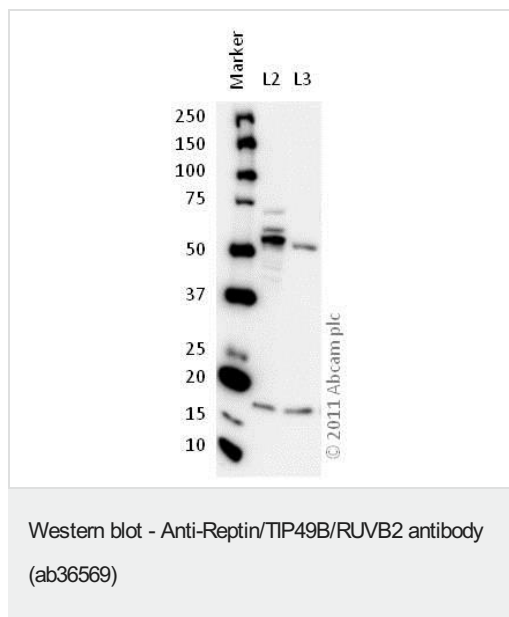
All lanes : Alexa Fluor® 680 conjugated goat anti-rabbit at 1/7000 dilution

Performed under reducing conditions.

Predicted band size: 50 kDa

Observed band size: 55 kDa

Detection method was Odyssey, with 10 second exposure.



All lanes : Anti-Reptin/TIP49B/RUVB2 antibody (ab36569) at 1 µg/ml

Lane 1 : Marker

Lane 2 : Zebrafish brain homogenate at 20 µg

Lane 3 : Zebrafish heart homogenate at 20 µg

Secondary

All lanes : Goat polyclonal to Rabbit IgG – H&L – Pre-Adsorbed (HRP) at 1/6000 dilution

Developed using the ECL technique.

Performed under reducing conditions.

Predicted band size: 50 kDa

Observed band size: 51 kDa

Exposure time: 5 minutes

Please note: All products are "FOR RESEARCH USE ONLY. NOT FOR USE IN DIAGNOSTIC PROCEDURES"

Our Abpromise to you: Quality guaranteed and expert technical support

- Replacement or refund for products not performing as stated on the datasheet
- Valid for 12 months from date of delivery
- Response to your inquiry within 24 hours
- We provide support in Chinese, English, French, German, Japanese and Spanish
- Extensive multi-media technical resources to help you
- We investigate all quality concerns to ensure our products perform to the highest standards

If the product does not perform as described on this datasheet, we will offer a refund or replacement. For full details of the Abpromise, please visit <https://www.abcam.cn/abpromise> or contact our technical team.

Terms and conditions

- Guarantee only valid for products bought direct from Abcam or one of our authorized distributors