

Anti-RELL1 antibody ab121394

6 图像

概述

产品名称	Anti-RELL1抗体
描述	兔多克隆抗体to RELL1
宿主	Rabbit
经测试应用	适用于: WB, IHC-P, ICC/IF
种属反应性	与反应: Human
免疫原	antigen, corresponding to amino acids 127-257 of Human RELL1 (UniProt ID: Q8IUW5).
阳性对照	WB: RH-30 cell line. IHC-P: Human skin, gastrointestinal, lymphoid and cerebral cortex tissue. ICC/IF: Human cell line U-2 OS.
常规说明	<p>The Life Science industry has been in the grips of a reproducibility crisis for a number of years. Abcam is leading the way in addressing this with our range of recombinant monoclonal antibodies and knockout edited cell lines for gold-standard validation. Please check that this product meets your needs before purchasing.</p> <p>If you have any questions, special requirements or concerns, please send us an inquiry and/or contact our Support team ahead of purchase. Recommended alternatives for this product can be found below, along with publications, customer reviews and Q&As</p>

性能

形式	Liquid
存放说明	Shipped at 4°C. Upon delivery aliquot and store at -20°C. Avoid repeated freeze / thaw cycles.
存储溶液	pH: 7.20 Preservative: 0.02% Sodium azide Constituents: 59% PBS, 40% Glycerol (glycerin, glycerine)
纯度	Immunogen affinity purified
克隆	多克隆
同种型	IgG

应用

The Abpromise guarantee

Abpromise™ 承诺保证使用ab121394于以下的经测试应用

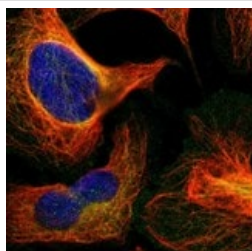
“应用说明”部分 下显示的仅为推荐的起始稀释度;实际最佳的稀释度/浓度应由使用者检定。

应用	Ab评论	说明
WB		Use a concentration of 0.04 - 0.4 µg/ml.
IHC-P		1/50 - 1/200. Perform heat mediated antigen retrieval with citrate buffer pH 6 before commencing with IHC staining protocol.
ICC/IF		Use a concentration of 0.25 - 2 µg/ml.

靶标

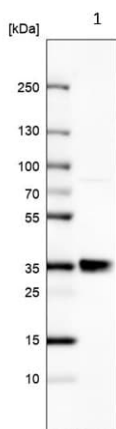
组织特异性	Widely expressed. Expressed at highest levels in the placenta, skeletal muscle, spleen and testis.
序列相似性	Belongs to the RELT family.
翻译后修饰	Phosphorylated in vitro by OXSR1.
细胞定位	Cell membrane.

图片



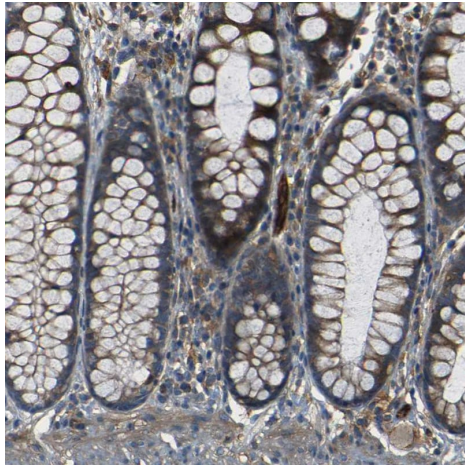
Immunocytochemistry/ Immunofluorescence - Anti-RELL1 antibody (ab121394)

ab121394, at 4 µg/ml, staining RELL1 in Human cell line U-2 OS by Immunofluorescence.



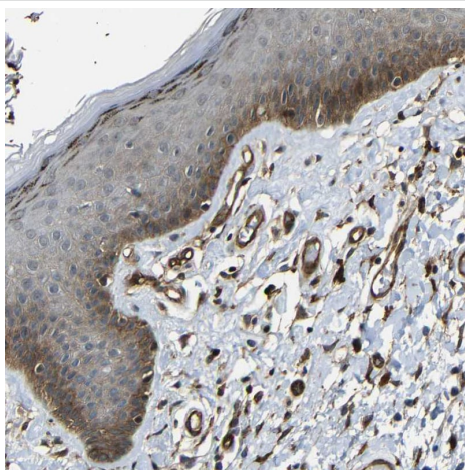
Western blot - Anti-RELL1 antibody (ab121394)

Anti-RELL1 antibody (ab121394) at 0.4 µg/ml + human cell line RH-30



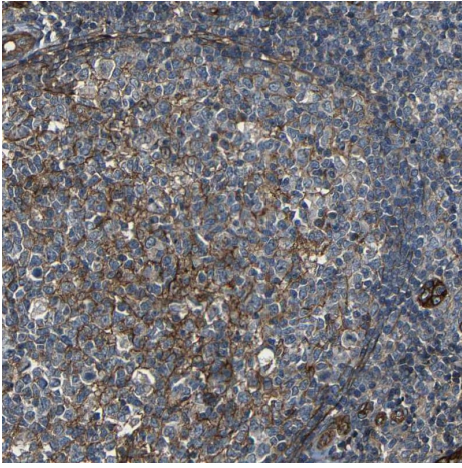
Immunohistochemical analysis of human gastrointestinal tissue labeling RELL1 with ab121394 at a 1/200 dilution.

Immunohistochemistry (Formalin/PFA-fixed paraffin-embedded sections) - Anti-RELL1 antibody (ab121394)



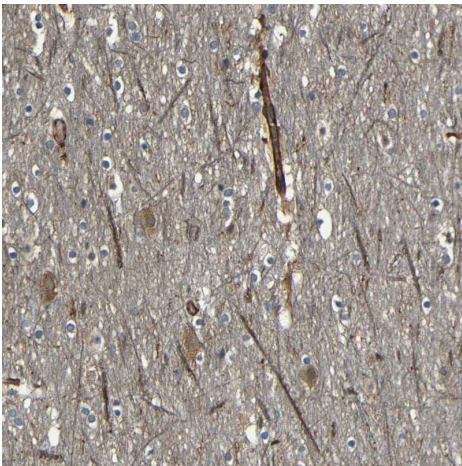
Immunohistochemical analysis of human skin tissue labeling RELL1 with ab121394 at a 1/200 dilution.

Immunohistochemistry (Formalin/PFA-fixed paraffin-embedded sections) - Anti-RELL1 antibody (ab121394)



Immunohistochemical analysis of human lymphoid tissue labeling RELL1 with ab121394 at a 1/200 dilution.

Immunohistochemistry (Formalin/PFA-fixed paraffin-embedded sections) - Anti-RELL1 antibody (ab121394)



Immunohistochemical analysis of human cerebral cortex tissue labeling RELL1 with ab121394 at a 1/200 dilution.

Immunohistochemistry (Formalin/PFA-fixed paraffin-embedded sections) - Anti-RELL1 antibody (ab121394)

Please note: All products are "FOR RESEARCH USE ONLY. NOT FOR USE IN DIAGNOSTIC PROCEDURES"

Our Abpromise to you: Quality guaranteed and expert technical support

- Replacement or refund for products not performing as stated on the datasheet
- Valid for 12 months from date of delivery
- Response to your inquiry within 24 hours
- We provide support in Chinese, English, French, German, Japanese and Spanish
- Extensive multi-media technical resources to help you
- We investigate all quality concerns to ensure our products perform to the highest standards

If the product does not perform as described on this datasheet, we will offer a refund or replacement. For full details of the Abpromise,

please visit <https://www.abcam.cn/abpromise> or contact our technical team.

Terms and conditions

- Guarantee only valid for products bought direct from Abcam or one of our authorized distributors