

### Anti-Rel B antibody ab154957

**3 References**   **6 图像**

#### 概述

产品名称	Anti-Rel B抗体
描述	兔多克隆抗体to Rel B
宿主	Rabbit
经测试应用	适用于: WB, IHC-P, ChIP, IP
种属反应性	与反应: Mouse, Human
免疫原	Recombinant protein fragment contain a sequence corresponding to a region within amino acids 354-528 of Human Rel B (Q01201).
阳性对照	ChIP: THP-1 chromatin extract; WB: Jurkat, transfected HEK-293T, NIH 3T3 whole cell lysates; IHC-P: Human breast carcinoma tissue; IP: HeLa whole cell lysate.
常规说明	<p>The Life Science industry has been in the grips of a reproducibility crisis for a number of years. Abcam is leading the way in addressing this with our range of recombinant monoclonal antibodies and knockout edited cell lines for gold-standard validation. Please check that this product meets your needs before purchasing.</p> <p>If you have any questions, special requirements or concerns, please send us an inquiry and/or contact our Support team ahead of purchase. Recommended alternatives for this product can be found below, along with publications, customer reviews and Q&amp;As</p>

#### 性能

形式	Liquid
存放说明	Shipped at 4°C. Store at +4°C short term (1-2 weeks). Upon delivery aliquot. Store at -20°C or -80°C. Avoid freeze / thaw cycle.
存储溶液	<p>pH: 7.00</p> <p>Preservative: 0.025% Proclin 300</p> <p>Constituents: 79% PBS, 20% Glycerol (glycerin, glycerine)</p>
纯度	Immunogen affinity purified
克隆	多克隆
同种型	IgG

#### 应用

The Abpromise guarantee

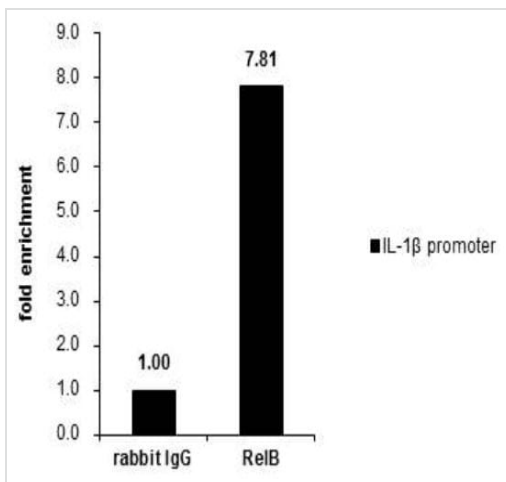
Abpromise™承诺保证使用ab154957于以下的经测试应用

“应用说明”部分 下显示的仅为推荐的起始稀释度;实际最佳的稀释度/浓度应由使用者检定。

应用	Ab评论	说明
WB		1/1000 - 1/10000. Predicted molecular weight: 62 kDa.
IHC-P		1/100 - 1/1000.
ChIP		Use at an assay dependent concentration.
IP		1/100 - 1/500.

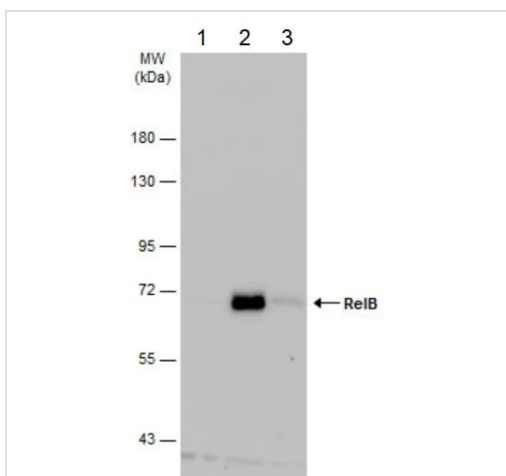
靶标	
功能	NF-kappa-B is a pleiotropic transcription factor which is present in almost all cell types and is involved in many biological processes such as inflammation, immunity, differentiation, cell growth, tumorigenesis and apoptosis. NF-kappa-B is a homo- or heterodimeric complex formed by the Rel-like domain-containing proteins RELA/p65, RELB, NFKB1/p105, NFKB1/p50, REL and NFKB2/p52. The dimers bind at kappa-B sites in the DNA of their target genes and the individual dimers have distinct preferences for different kappa-B sites that they can bind with distinguishable affinity and specificity. Different dimer combinations act as transcriptional activators or repressors, respectively. NF-kappa-B is controlled by various mechanisms of post-translational modification and subcellular compartmentalization as well as by interactions with other cofactors or corepressors. NF-kappa-B complexes are held in the cytoplasm in an inactive state complexed with members of the NF-kappa-B inhibitor (I-kappa-B) family. In a conventional activation pathway, I-kappa-B is phosphorylated by I-kappa-B kinases (IKKs) in response to different activators, subsequently degraded thus liberating the active NF-kappa-B complex which translocates to the nucleus. NF-kappa-B heterodimeric RelB-p50 and RelB-p52 complexes are transcriptional activators. RELB neither associates with DNA nor with RELA/p65 or REL. Stimulates promoter activity in the presence of NFKB2/p49.
序列相似性	Contains 1 RHD (Rel-like) domain.
结构域	Both N- and C-terminal domains are required for transcriptional activation.
翻译后修饰	Phosphorylation at 'Thr-103' and 'Ser-573' is followed by proteasomal degradation.
细胞定位	Nucleus. Cytoplasm > cytoskeleton > centrosome. Co-localizes with NEK6 in the centrosome.

图片



ChIP - Anti-Rel B antibody (ab154957)

Cross-linked ChIP was performed with THP-1 (human monocytic leukemia cell line) chromatin extract treated with LPS (1.0 µg/ml for 3 h) and 5 µg of either normal rabbit IgG or ab154957. The precipitated DNA was detected by PCR with primer set targeting to IL-1β promoter.



Western blot - Anti-Rel B antibody (ab154957)

**All lanes** : Anti-Rel B antibody (ab154957) at 1/10000 dilution

**Lane 1** : Jurkat (human T cell leukemia cell line from peripheral blood) whole cell lysate

**Lane 2** : Raji (human Burkitt's lymphoma cell line) whole cell lysate

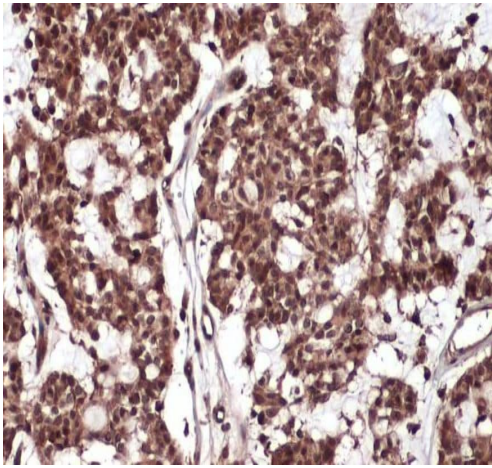
**Lane 3** : NCI-H1299 (human lung carcinoma cell line) whole cell lysate

Lysates/proteins at 30 µg per lane.

### Secondary

**All lanes** : HRP-conjugated anti-rabbit IgG antibody

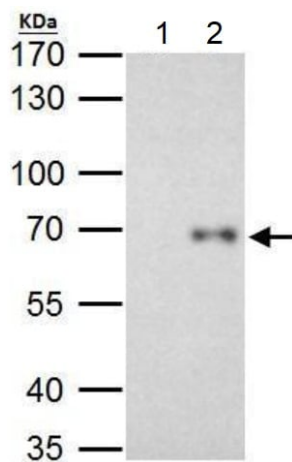
**Predicted band size:** 62 kDa



Immunohistochemistry (Formalin/PFA-fixed paraffin-embedded sections) - Anti-Rel B antibody (ab154957)

Immunohistochemical analysis of paraffin-embedded human breast carcinoma tissue staining Rel B at cytoplasm and nucleus with ab154957 at 1/500.

Antigen Retrieval: Citrate buffer, pH 6.0, 15 min.



Immunoprecipitation - Anti-Rel B antibody (ab154957)

RelB antibody immunoprecipitates RelB protein in IP experiments.

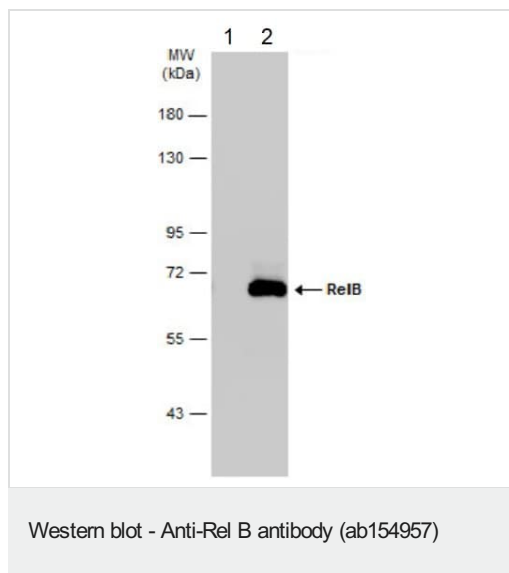
IP Sample: HeLa (human epithelial cell line from cervix adenocarcinoma) whole cell lysate

A. Control with 2 µg of preimmune rabbit IgG

B. Immunoprecipitation of RelB protein by 2 µg of ab154957

7.5% SDS-PAGE

The immunoprecipitated RelB protein was detected by ab154957 at 1/1000 dilution, followed by anti-rabbit IgG antibody.



**All lanes :** Anti-Rel B antibody (ab154957) at 1/5000 dilution

**Lane 1 :** HEK-293T (human epithelial cell line from embryonic kidney transformed with large T antigen) whole cell lysate

**Lane 2 :** Transfected HEK-293T whole cell lysate

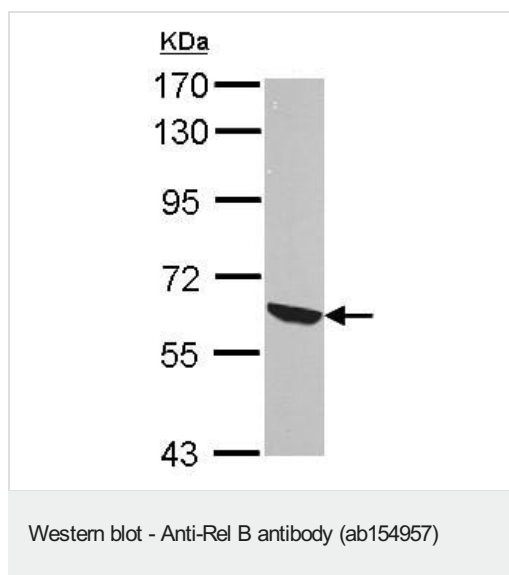
Lysates/proteins at 30 µg per lane.

#### Secondary

**All lanes :** HRP-conjugated anti-rabbit IgG antibody

**Predicted band size:** 62 kDa

7.5% SDS-PAGE



Anti-Rel B antibody (ab154957) at 1/10000 dilution + NIH/3T3 (mouse embryo fibroblast cell line) whole cell lysate at 30 µg

#### Secondary

HRP-conjugated anti-rabbit IgG antibody

**Predicted band size:** 62 kDa

7.5% SDS PAGE

**Please note:** All products are "FOR RESEARCH USE ONLY. NOT FOR USE IN DIAGNOSTIC PROCEDURES"

#### Our Abpromise to you: Quality guaranteed and expert technical support

- Replacement or refund for products not performing as stated on the datasheet

- Valid for 12 months from date of delivery
- Response to your inquiry within 24 hours
- We provide support in Chinese, English, French, German, Japanese and Spanish
- Extensive multi-media technical resources to help you
- We investigate all quality concerns to ensure our products perform to the highest standards

If the product does not perform as described on this datasheet, we will offer a refund or replacement. For full details of the Abpromise, please visit <https://www.abcam.cn/abpromise> or contact our technical team.

## **Terms and conditions**

---

- Guarantee only valid for products bought direct from Abcam or one of our authorized distributors