

Anti-REEP3 antibody ab106463

1 References [1 图像](#)

概述

产品名称	Anti-REEP3抗体
描述	兔多克隆抗体to REEP3
宿主	Rabbit
特异性	At least three isoforms of REEP3 are known to exist; ab106463 will detect all three.
经测试应用	适用于: WB
种属反应性	与反应: Rat
免疫原	Synthetic peptide corresponding to 17 amino acids near the C terminal of Human REEP3 (NP_001001330).
阳性对照	Rat heart tissue lysate.
常规说明	<p>The Life Science industry has been in the grips of a reproducibility crisis for a number of years. Abcam is leading the way in addressing this with our range of recombinant monoclonal antibodies and knockout edited cell lines for gold-standard validation. Please check that this product meets your needs before purchasing.</p> <p>If you have any questions, special requirements or concerns, please send us an inquiry and/or contact our Support team ahead of purchase. Recommended alternatives for this product can be found below, along with publications, customer reviews and Q&As</p>

性能

形式	Liquid
存放说明	Shipped at 4°C. Store at +4°C short term (1-2 weeks). Store at -20°C or -80°C. Avoid freeze / thaw cycle.
存储溶液	<p>pH: 7.2</p> <p>Preservative: 0.02% Sodium azide</p> <p>Constituent: 99% PBS</p>
纯度	Immunogen affinity purified
纯化说明	ab106463 was purified by affinity chromatography via a peptide column.
克隆	多克隆
同种型	IgG

应用

The Abpromise guarantee

Abpromise™承诺保证使用ab106463于以下的经测试应用

“应用说明”部分 下显示的仅为推荐的起始稀释度;实际最佳的稀释度/浓度应由使用者检定。

应用	Ab评论	说明
WB		Use a concentration of 1 - 2 µg/ml. Predicted molecular weight: 29 kDa.

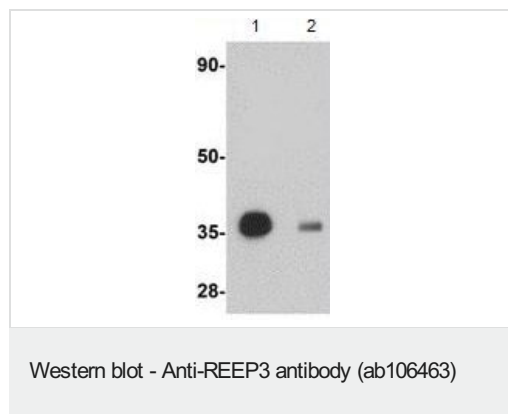
靶标

功能 May enhance the cell surface expression of odorant receptors.

序列相似性 Belongs to the DP1 family.

细胞定位 Membrane.

图片



All lanes : Anti-REEP3 antibody (ab106463) at 1 µg/ml

Lane 1 : Rat heart tissue lysate

Lane 2 : Rat heart tissue lysate with immunizing peptide

Lysates/proteins at 15 µg per lane.

Predicted band size: 29 kDa

Please note: All products are "FOR RESEARCH USE ONLY. NOT FOR USE IN DIAGNOSTIC PROCEDURES"

Our Abpromise to you: Quality guaranteed and expert technical support

- Replacement or refund for products not performing as stated on the datasheet
- Valid for 12 months from date of delivery
- Response to your inquiry within 24 hours
- We provide support in Chinese, English, French, German, Japanese and Spanish
- Extensive multi-media technical resources to help you
- We investigate all quality concerns to ensure our products perform to the highest standards

If the product does not perform as described on this datasheet, we will offer a refund or replacement. For full details of the Abpromise, please visit <https://www.abcam.cn/abpromise> or contact our technical team.

Terms and conditions

-
- Guarantee only valid for products bought direct from Abcam or one of our authorized distributors