


Anti-RCC2 antibody ab70788

★★★★★ [2 Abreviews](#) [2 References](#) [2 图像](#)

概述

产品名称	Anti-RCC2抗体
描述	兔多克隆抗体to RCC2
宿主	Rabbit
经测试应用	适用于: IHC-P, WB
种属反应性	与反应: Mouse, Human 预测可用于: Horse, Dog, Pig, Chimpanzee, Rhesus monkey, Orangutan, Bat, Elephant 
免疫原	Synthetic peptide corresponding to a region between residue 475 and the C-terminus (residue 522) of human RCC2. (NP_061185.1).
阳性对照	HeLa and 293T whole cell lysates.
常规说明	<p>The Life Science industry has been in the grips of a reproducibility crisis for a number of years. Abcam is leading the way in addressing this with our range of recombinant monoclonal antibodies and knockout edited cell lines for gold-standard validation. Please check that this product meets your needs before purchasing.</p> <p>If you have any questions, special requirements or concerns, please send us an inquiry and/or contact our Support team ahead of purchase. Recommended alternatives for this product can be found below, along with publications, customer reviews and Q&As</p>

性能

形式	Liquid
存放说明	Shipped at 4°C. Upon delivery aliquot and store at -20°C. Avoid freeze / thaw cycles.
存储溶液	pH: 6.8 Preservative: 0.09% Sodium azide Constituents: 0.1% BSA, Tris buffered saline
纯度	Immunogen affinity purified
克隆	多克隆
同种型	IgG

应用

The Abpromise guarantee

Abpromise™ 承诺保证使用 ab70788 于以下的经测试应用

“应用说明”部分 下显示的仅为推荐的起始稀释度;实际最佳的稀释度/浓度应由使用者检定。

应用	Ab评论	说明
IHC-P		1/200 - 1/1000. Perform heat mediated antigen retrieval with citrate buffer pH 6 before commencing with IHC staining protocol.
WB	★★★★★ (2)	1/2000 - 1/10000. Detects a band of approximately 56 kDa (predicted molecular weight: 56 kDa).

靶标

功能

Required for completion of mitosis and cytokinesis. May function as a guanine nucleotide exchange factor for the small GTPase RAC1.

序列相似性

Contains 7 RCC1 repeats.

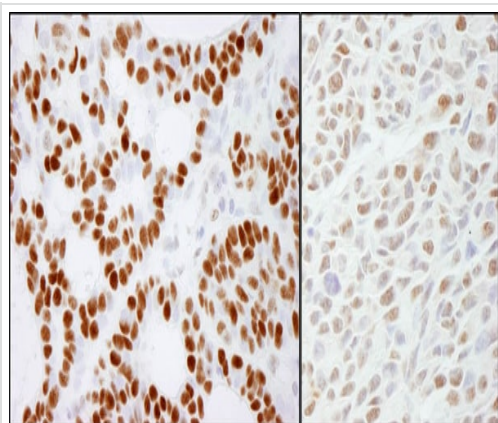
翻译后修饰

Phosphorylated upon DNA damage, probably by ATM or ATR.

细胞定位

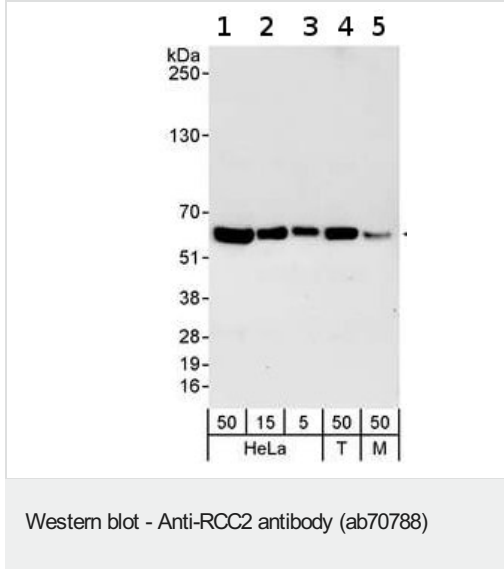
Nucleus > nucleolus. Chromosome > centromere. Cytoplasm > cytoskeleton > spindle. Appears in the nucleus at G2, then concentrates at the inner centromere region of chromosomes during prophase. Redistributes to the midzone of the mitotic spindle during anaphase. Here, the protein covers the entire equatorial diameter from cortex to cortex.

图片



Immunohistochemistry (Formalin/PFA-fixed paraffin-embedded sections) analysis of human skin basal cell carcinoma (left) and mouse CT26 colon carcinoma (right) tissues labelling RCC2 with ab70788 at 1/1000 (0.2µg/ml) and 1/200 (1µg/ml). Detection: DAB.

Immunohistochemistry (Formalin/PFA-fixed paraffin-embedded sections) - Anti-RCC2 antibody (ab70788)



All lanes : Anti-RCC2 antibody (ab70788) at 0.04 µg/ml

Lane 1 : HeLa whole cell lysate at 50 µg

Lane 2 : HeLa whole cell lysate at 15 µg

Lane 3 : HeLa whole cell lysate at 5 µg

Lane 4 : 293T whole cell lysate at 50 µg

Lane 5 : NIH3T3 whole cell lysate at 50 µg

Predicted band size: 56 kDa

Observed band size: 56 kDa

Please note: All products are "FOR RESEARCH USE ONLY. NOT FOR USE IN DIAGNOSTIC PROCEDURES"

Our Abpromise to you: Quality guaranteed and expert technical support

- Replacement or refund for products not performing as stated on the datasheet
- Valid for 12 months from date of delivery
- Response to your inquiry within 24 hours
- We provide support in Chinese, English, French, German, Japanese and Spanish
- Extensive multi-media technical resources to help you
- We investigate all quality concerns to ensure our products perform to the highest standards

If the product does not perform as described on this datasheet, we will offer a refund or replacement. For full details of the Abpromise, please visit <https://www.abcam.cn/abpromise> or contact our technical team.

Terms and conditions

- Guarantee only valid for products bought direct from Abcam or one of our authorized distributors