

Anti-RCC1 antibody ab70749

3 图像

概述

产品名称	Anti-RCC1抗体
描述	山羊多克隆抗体to RCC1
宿主	Goat
经测试应用	适用于: IP, WB
种属反应性	与反应: Human 预测可用于: Chimpanzee, Rhesus monkey, Gorilla 
免疫原	Synthetic peptide corresponding to Human RCC1 (N terminal). Database link: P18754
阳性对照	WB: Whole cell lysate from HeLa, 293T cells; IP: HeLa whole cell lysate.
常规说明	<p>The Life Science industry has been in the grips of a reproducibility crisis for a number of years. Abcam is leading the way in addressing this with our range of recombinant monoclonal antibodies and knockout edited cell lines for gold-standard validation. Please check that this product meets your needs before purchasing.</p> <p>If you have any questions, special requirements or concerns, please send us an inquiry and/or contact our Support team ahead of purchase. Recommended alternatives for this product can be found below, along with publications, customer reviews and Q&As</p>

性能

形式	Liquid
存放说明	Shipped at 4°C. Upon delivery aliquot and store at -20°C. Avoid freeze / thaw cycles.
存储溶液	pH: 7 Preservative: 0.09% Sodium azide Constituents: 1.815% Tris, 1.764% Sodium citrate, 0.021% PBS
纯度	Immunogen affinity purified
克隆	多克隆
同种型	IgG

应用

The Abpromise guarantee

Abpromise™ 承诺保证使用 ab70749 于以下的经测试应用

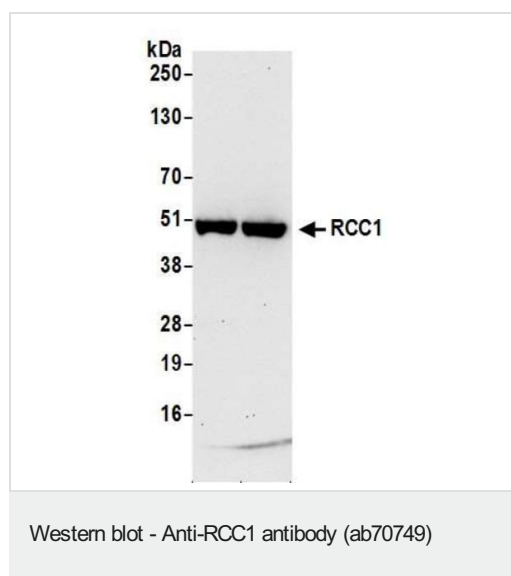
“应用说明”部分 下显示的仅为推荐的起始稀释度；实际最佳的稀释度/浓度应由使用者检定。

应用	Ab 评论	说明
IP		Use at 1-2 µg/mg of lysate.
WB		1/2000 - 1/10000. Detects a band of approximately 45 kDa (predicted molecular weight: 45 kDa).

靶标

功能	Guanine-nucleotide releasing factor that promotes the exchange of Ran-bound GDP by GTP. Involved in the regulation of onset of chromosome condensation in the S phase. Binds both to the nucleosomes and double-stranded DNA. RCC1-Ran complex (together with other proteins) acts as a component of a signal transmission pathway that detects unreplicated DNA. Plays a key role in nucleo-cytoplasmic transport, mitosis and nuclear-envelope assembly.
序列相似性	Contains 7 RCC1 repeats.
翻译后修饰	N-terminal methylation by METTL11A/NTM1 is required for binding double-stranded DNA and stable chromatin association. Di- and trimethylation produce a permanent positive charge on the amino group, which facilitate electrostatic binding to the phosphate groups on DNA, while inhibiting histone-binding. Methylated tail helps retain RCC1 on chromosomes during nucleotide exchange on Ran.
细胞定位	Nucleus. Cytoplasm. Becomes dispersed throughout the cytoplasm during mitosis.

图片



All lanes : Anti-RCC1 antibody (ab70749) at 0.1 µg/ml

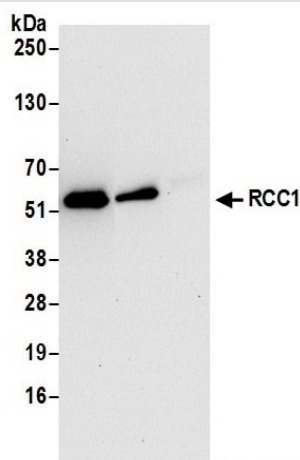
Lane 1 : HeLa whole cell lysate

Lane 2 : HEK-293T whole cell lysate

Lysates/proteins at 50 µg per lane.

Predicted band size: 45 kDa

Chemiluminescence with an exposure time of 30 seconds.



Immunoprecipitation - Anti-RCC1 antibody (ab70749)

Detection of human RCC1 by western blot of immunoprecipitates. Whole cell lysate (0.5 or 1.0 mg per IP reaction; 20% of IP loaded) from HeLa cells prepared using NETN lysis buffer.

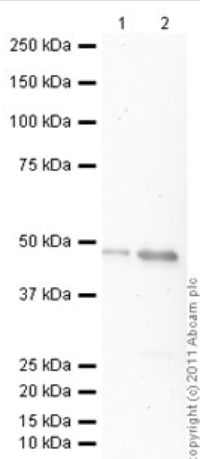
Lane 1: Anti-RCC1 antibody ab70749 used for IP at 6 µg per reaction

Lane 2: Anti-RCC1 antibody, [ab245594](#)

Lane 3: IgG Control

For blotting immunoprecipitated RCC1, ab70749 was used at 1 µg/mL.

Detection: Chemiluminescence with an exposure time of 30 seconds.



Western blot - Anti-RCC1 antibody (ab70749)

All lanes : Anti-RCC1 antibody (ab70749) at 1/2000 dilution

Lane 1 : Recombinant Human RCC1 protein ([ab90625](#)) at 0.01 µg

Lane 2 : Recombinant Human RCC1 protein ([ab90625](#)) at 0.1 µg

Secondary

All lanes : Rabbit polyclonal to Goat IgG - H&L - Pre-Adsorbed (HRP) ([ab65486](#)) at 1/3000 dilution (Rabbit polyclonal to Goat IgG - H&L - Pre-Adsorbed (HRP))

Developed using the ECL technique.

Performed under reducing conditions.

Predicted band size: 45 kDa

Exposure time: 8 minutes

Please note: All products are "FOR RESEARCH USE ONLY. NOT FOR USE IN DIAGNOSTIC PROCEDURES"

Our Abpromise to you: Quality guaranteed and expert technical support

- Replacement or refund for products not performing as stated on the datasheet
- Valid for 12 months from date of delivery
- Response to your inquiry within 24 hours

- We provide support in Chinese, English, French, German, Japanese and Spanish
- Extensive multi-media technical resources to help you
- We investigate all quality concerns to ensure our products perform to the highest standards

If the product does not perform as described on this datasheet, we will offer a refund or replacement. For full details of the Abpromise, please visit <https://www.abcam.cn/abpromise> or contact our technical team.

Terms and conditions

- Guarantee only valid for products bought direct from Abcam or one of our authorized distributors