


Anti-RC3H1 antibody ab70196

[1 References](#) [2 图像](#)

概述

产品名称	Anti-RC3H1抗体
描述	兔多克隆抗体to RC3H1
宿主	Rabbit
经测试应用	适用于: WB, IP
种属反应性	与反应: Human 预测可用于: Pig, Chimpanzee, Rhesus monkey, Gorilla, Orangutan, Bat 
免疫原	Synthetic peptide corresponding to a region between C terminal residues 1075 and 1133 of human RC3H1 (NP_742068.1)
阳性对照	HeLa and 293T whole cell lysates.
常规说明	<p>The Life Science industry has been in the grips of a reproducibility crisis for a number of years. Abcam is leading the way in addressing this with our range of recombinant monoclonal antibodies and knockout edited cell lines for gold-standard validation. Please check that this product meets your needs before purchasing.</p> <p>If you have any questions, special requirements or concerns, please send us an inquiry and/or contact our Support team ahead of purchase. Recommended alternatives for this product can be found below, along with publications, customer reviews and Q&As</p>

性能

形式	Liquid
存放说明	Shipped at 4°C. Upon delivery aliquot and store at -20°C. Avoid freeze / thaw cycles.
存储溶液	pH: 6.8 Preservative: 0.09% Sodium azide Constituents: 0.1% BSA, Tris buffered saline
纯度	Immunogen affinity purified
纯化说明	ab70196 was affinity purified using an epitope specific to RC3H1 immobilized on solid support.
克隆	多克隆
同种型	IgG

The Abpromise guarantee

Abpromise™承诺保证使用ab70196于以下的经测试应用

“应用说明”部分 下显示的仅为推荐的起始稀释度;实际最佳的稀释度/浓度应由使用者检定。

应用	Ab评论	说明
WB		
IP		

应用说明

IP: Use at 2-5µg/mg of lysate.

WB: 1/1000 - 1/10000. Detects a band of approximately 150 kDa (predicted molecular weight: 126 kDa).

Not yet tested in other applications.

Optimal dilutions/concentrations should be determined by the end user.

靶标

功能

Represses ICOS function, an essential costimulatory receptor for follicular T-cells. May act as an ubiquitin ligase that regulates ubiquitin-dependent control of AU-rich mRNAs by AUF1/HNRPD and HUR/ELAVL1.

组织特异性

Widely expressed. Expressed at higher level in cerebellum, spleen, ovary and liver.

序列相似性

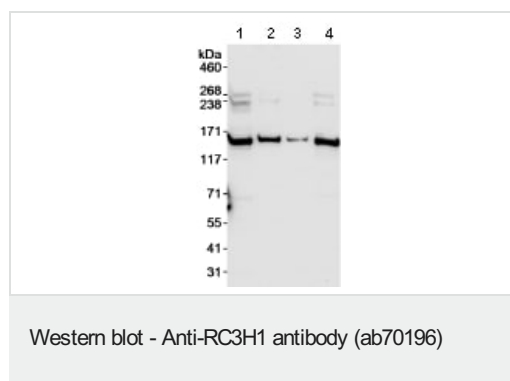
Contains 1 C3H1-type zinc finger.

Contains 1 RING-type zinc finger.

细胞定位

Cytoplasm. Localizes to cytosolic RNA granules, which are sites for regulating mRNA translation and decay, suggesting that it may bind RNA.

图片



All lanes : Anti-RC3H1 antibody (ab70196) at 0.04 µg/ml

Lane 1 : HeLa whole cell lysate at 50 µg

Lane 2 : HeLa whole cell lysate at 15 µg

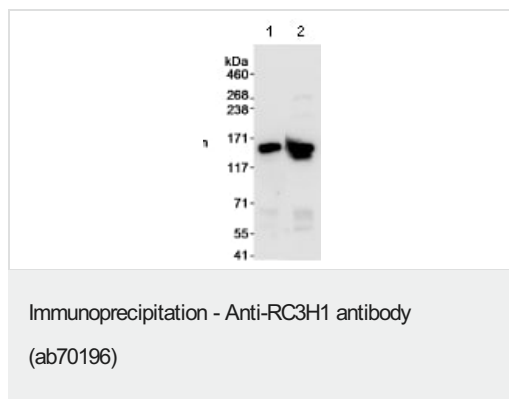
Lane 3 : HeLa whole cell lysate at 5 µg

Lane 4 : 293T whole cell lysate at 50 µg

Predicted band size: 126 kDa

Observed band size: 150 kDa

Exposure time: 30 seconds



Western Blot showing Lane 2: ab70196 at 0.04 μ g/ml staining RC3H1 in HeLa whole cell lysates immunoprecipitated using ab70196 at 3 μ g/mg lysate (1 mg/IP; 1/4 of IP loaded/lane). Lane 1: an irrelevant antibody was used for immunoprecipitation. Detection: Chemiluminescence with an exposure time of 30 seconds.

Please note: All products are "FOR RESEARCH USE ONLY. NOT FOR USE IN DIAGNOSTIC PROCEDURES"

Our Abpromise to you: Quality guaranteed and expert technical support

- Replacement or refund for products not performing as stated on the datasheet
- Valid for 12 months from date of delivery
- Response to your inquiry within 24 hours
- We provide support in Chinese, English, French, German, Japanese and Spanish
- Extensive multi-media technical resources to help you
- We investigate all quality concerns to ensure our products perform to the highest standards

If the product does not perform as described on this datasheet, we will offer a refund or replacement. For full details of the Abpromise, please visit <https://www.abcam.cn/abpromise> or contact our technical team.

Terms and conditions

- Guarantee only valid for products bought direct from Abcam or one of our authorized distributors