

### Anti-RBP4 antibody [EP3657] ab109193

**重组** RabMAb

**13 References** [7 图像](#)

#### 概述

产品名称	Anti-RBP4抗体[EP3657]
描述	兔单克隆抗体[EP3657] to RBP4
宿主	Rabbit
经测试应用	<b>适用于:</b> WB, ICC/IF <b>不适用于:</b> IHC-P
种属反应性	<b>与反应:</b> Mouse, Rat, Human
免疫原	Synthetic peptide. This information is proprietary to Abcam and/or its suppliers.
阳性对照	WB: Human plasma, HepG2 cell lysates, Human fetal kidney, Mouse serum and Rat serum. ICC/IF: HeLa cells
常规说明	This product is a recombinant monoclonal antibody, which offers several advantages including: <ul style="list-style-type: none"> <li>- High batch-to-batch consistency and reproducibility</li> <li>- Improved sensitivity and specificity</li> <li>- Long-term security of supply</li> <li>- Animal-free production</li> </ul> For more information <a href="#">see here</a> . Our RabMAb <sup>®</sup> technology is a patented hybridoma-based technology for making rabbit monoclonal antibodies. For details on our patents, please refer to <a href="#">RabMAb<sup>®</sup> patents</a> .

#### 性能

形式	Liquid
存放说明	Shipped at 4°C. Store at +4°C short term (1-2 weeks). Upon delivery aliquot. Store at -20°C. Stable for 12 months at -20°C.
存储溶液	pH: 7.20 Preservative: 0.01% Sodium azide Constituents: 40% Glycerol (glycerin, glycerine), 59% PBS, 0.18% BSA
纯度	Protein A purified
克隆	单克隆
克隆编号	EP3657

同种型

IgG

应用

The Abpromise guarantee

Abpromise™承诺保证使用ab109193于以下的经测试应用

“应用说明”部分 下显示的仅为推荐的起始稀释度;实际最佳的稀释度/浓度应由使用者检定。

应用	Ab评论	说明
WB		1/1000 - 1/10000. Detects a band of approximately 23 kDa (predicted molecular weight: 23 kDa).
ICC/IF		1/100 - 1/250.

应用说明

Is unsuitable for IHC-P.

靶标

功能

Delivers retinol from the liver stores to the peripheral tissues. In plasma, the RBP-retinol complex interacts with transthyretin, this prevents its loss by filtration through the kidney glomeruli.

疾病相关

Defects in RBP4 are a cause of retinol-binding protein deficiency (RBP deficiency) [MIM:180250]. This condition causes night vision problems. It produces a typical 'fundus xerophthalmicus', featuring a progressed atrophy of the retinal pigment epithelium.

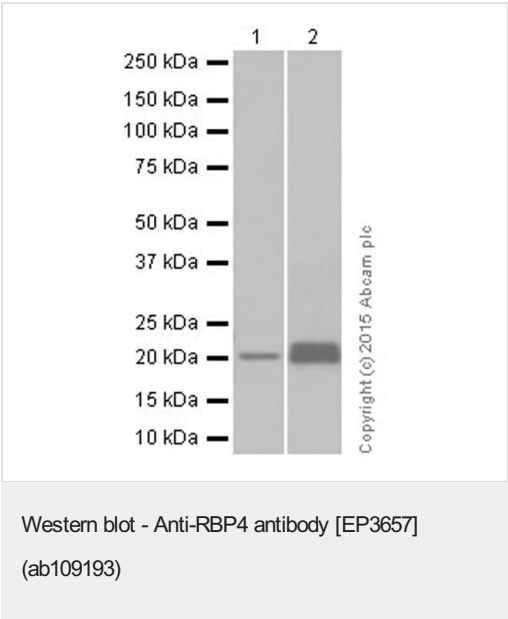
序列相似性

Belongs to the calycin superfamily. Lipocalin family.

细胞定位

Secreted.

图片



All lanes : Anti-RBP4 antibody [EP3657] (ab109193) at 1/5000 dilution

Lane 1 : HepG2 (human hepatocellular carcinoma) whole cell lysate

Lane 2 : Human fetal kidney

Lysates/proteins at 20 µg per lane.

Secondary

All lanes : Anti-Rabbit IgG (HRP), specific to the non-reduced form of IgG at 1/1000 dilution

Predicted band size: 23 kDa

Observed band size: 23 kDa

Blocking and diluting buffer 5% NFDM/TBST

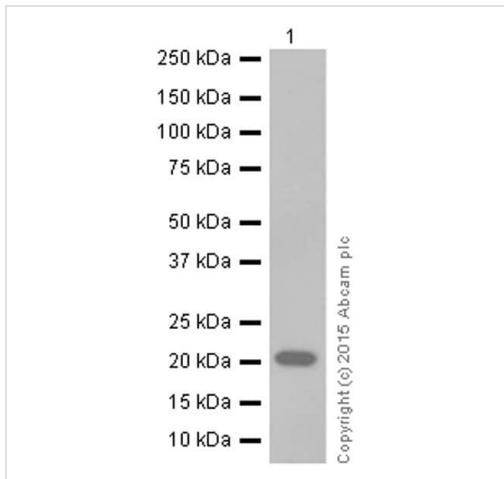
Anti-RBP4 antibody [EP3657] (ab109193) at 1/5000 dilution +  
Mouse serum at 20 µg

#### Secondary

Anti-Rabbit IgG (HRP), specific to the non-reduced form of IgG at  
1/1000 dilution

**Predicted band size:** 23 kDa

**Observed band size:** 23 kDa



Western blot - Anti-RBP4 antibody [EP3657]  
(ab109193)

Blocking and diluting buffer 5% NFDM/TBST

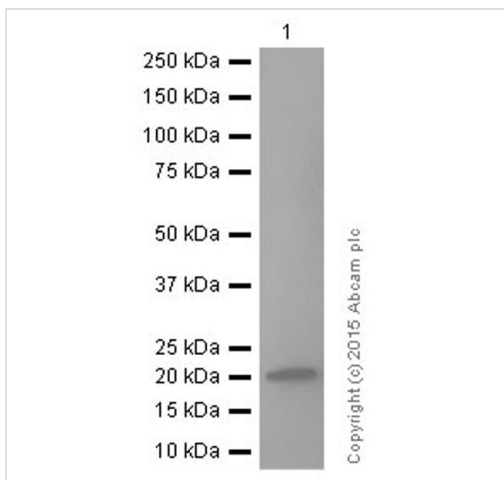
Anti-RBP4 antibody [EP3657] (ab109193) at 1/5000 dilution + Rat  
serum at 20 µg

#### Secondary

Goat Anti-Rabbit IgG H&L (HRP) ([ab97051](#)) at 1/20000 dilution

**Predicted band size:** 23 kDa

**Observed band size:** 23 kDa



Western blot - Anti-RBP4 antibody [EP3657]  
(ab109193)

Blocking and diluting buffer 5% NFDM/TBST

**All lanes :** Anti-RBP4 antibody [EP3657] (ab109193) at 1/1000  
dilution (un-purified)

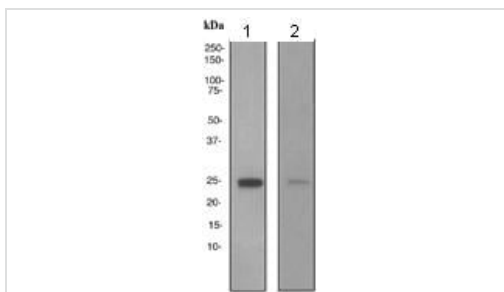
**Lane 1 :** Human plasma lysate

**Lane 2 :** HepG2 cell lysate

Lysates/proteins at 10 µg per lane.

#### Secondary

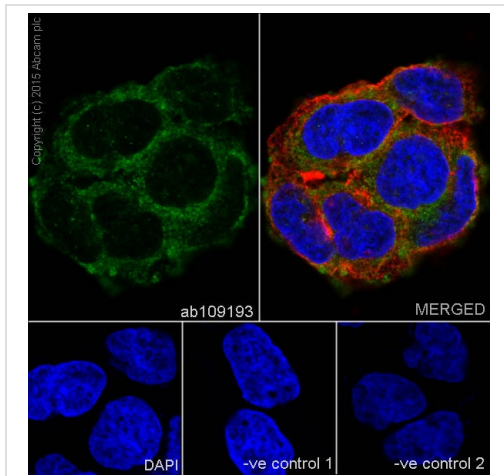
**All lanes :** HRP labelled goat anti-rabbit at 1/2000 dilution



Western blot - Anti-RBP4 antibody [EP3657]  
(ab109193)

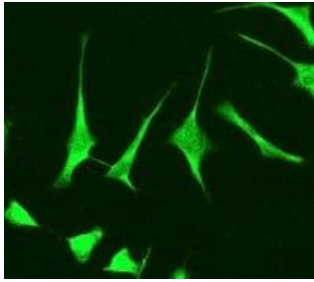
**Predicted band size:** 23 kDa

**Observed band size:** 23 kDa



Immunocytochemistry/ Immunofluorescence - Anti-RBP4 antibody [EP3657] (ab109193)

Immunocytochemistry/immunofluorescence staining of 100% methanol fixed; 0.1% triton X 100 permeabilized HeLa (human cervix adenocarcinoma) cells with purified ab109193 at dilution of 1/100. The secondary antibody used was Alexa Fluor® 488; goat anti-rabbit IgG (**ab150077**) at a dilution of 1/1000. Nucleus was counter-stained with DAPI (blue). **ab7291**, a mouse anti-tubulin antibody (1/1000) was used to stain tubulin along with **ab150120** (AlexaFluor®594 goat anti-mouse secondary, 1/1000) shown in the top right hand panel. The negative controls are shown in the bottom middle and right hand panels- for negative control 1 rabbit primary antibody and anti-mouse secondary antibody (**ab150120**) was used. For negative control 2 mouse primary antibody (**ab7291**) and anti-rabbit secondary antibody (**ab150077**) was used.



Immunocytochemistry/ Immunofluorescence - Anti-RBP4 antibody [EP3657] (ab109193)

Immunofluorescent analysis of HeLa cells labelling RBP4 with unpurified ab109193 at a dilution of 1/100.

Why choose a recombinant antibody?



Anti-RBP4 antibody [EP3657] (ab109193)

### **Our Abpromise to you: Quality guaranteed and expert technical support**

---

- Replacement or refund for products not performing as stated on the datasheet
- Valid for 12 months from date of delivery
- Response to your inquiry within 24 hours
- We provide support in Chinese, English, French, German, Japanese and Spanish
- Extensive multi-media technical resources to help you
- We investigate all quality concerns to ensure our products perform to the highest standards

If the product does not perform as described on this datasheet, we will offer a refund or replacement. For full details of the Abpromise, please visit <https://www.abcam.cn/abpromise> or contact our technical team.

### **Terms and conditions**

---

- Guarantee only valid for products bought direct from Abcam or one of our authorized distributors