


Anti-RBM35A + RBM35B antibody [23A7.C9] ab106555

4 References [1 图像](#)

概述

产品名称	Anti-RBM35A + RBM35B抗体[23A7.C9]
描述	小鼠单克隆抗体[23A7.C9] to RBM35A + RBM35B
宿主	Mouse
特异性	ab106555 recognises both Mouse RBM35A and RBM35B.
经测试应用	适用于: WB
种属反应性	与反应: Human 预测可用于: Rat, Horse, Cow, Dog, Pig, Chimpanzee, Opossum 
免疫原	Recombinant full length Mouse RBM35A with a proprietary tag (NP_918944.2).
阳性对照	RBM35A or RBM35B transfected 293T cell extracts
常规说明	<p>The Life Science industry has been in the grips of a reproducibility crisis for a number of years. Abcam is leading the way in addressing this with our range of recombinant monoclonal antibodies and knockout edited cell lines for gold-standard validation. Please check that this product meets your needs before purchasing.</p> <p>If you have any questions, special requirements or concerns, please send us an inquiry and/or contact our Support team ahead of purchase. Recommended alternatives for this product can be found below, along with publications, customer reviews and Q&As</p>

性能

形式	Liquid
存放说明	Shipped at 4°C. Upon delivery aliquot. Store at -20°C or -80°C. Avoid freeze / thaw cycle.
存储溶液	Preservative: 0.01% Sodium azide Constituents: 0.42% Potassium phosphate, 0.88% Sodium chloride
纯度	Protein A purified
纯化说明	ab106555 was purified from tissue culture supernatant by Protein A chromatography followed by extensive dialysis against the buffer stated. The antibody is sterile filtered.
克隆	单克隆
克隆编号	23A7.C9
同种型	IgG1

应用

The Abpromise guarantee

Abpromise™承诺保证使用ab106555于以下的经测试应用

“应用说明”部分 下显示的仅为推荐的起始稀释度;实际最佳的稀释度/浓度应由使用者检定。

应用	Ab评论	说明
WB		1/1000. Predicted molecular weight: 76, 77 kDa.

靶标

功能

mRNA splicing factor that regulates the formation of epithelial cell-specific isoforms. Specifically regulates the expression of FGFR2-IIIb, an epithelial cell-specific isoform of FGFR2. Also regulates the splicing of CD44, CTNND1, ENAH, 3 transcripts that undergo changes in splicing during the epithelial-to-mesenchymal transition (EMT). Acts by directly binding specific sequences in mRNAs. Binds the GU-rich sequence motifs in the ISE/ISS-3, a cis-element regulatory region present in the mRNA of FGFR2.

组织特异性

Epithelial cell-specific. Epithelial-specific expression in diverse tissues and organs with particularly notable levels of expression in skin and gastrointestinal epithelia.

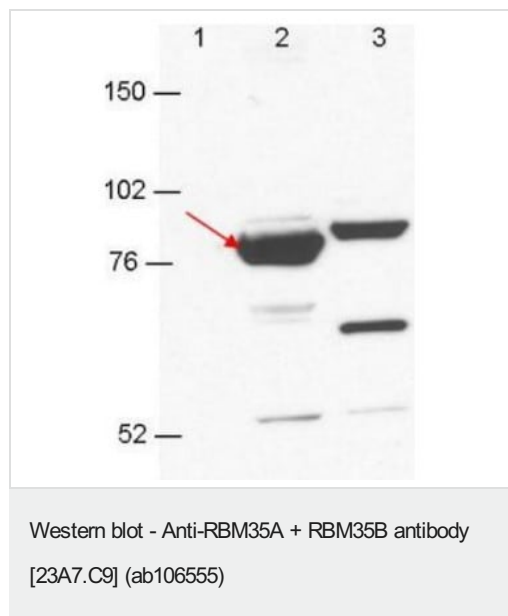
序列相似性

Belongs to the ESRP family.
Contains 3 RRM (RNA recognition motif) domains.

细胞定位

Nucleus.

图片



All lanes : Anti-RBM35A + RBM35B antibody [23A7.C9]
(ab106555) at 1/1000 dilution

Lane 1 : GFP transfected 293T cell extract

Lane 2 : RBM35A transfected 293T cell extract

Lane 3 : RBM35B transfected 293T cell extract

Lysates/proteins at 5 µg per lane.

Secondary

All lanes : anti-mouse ECL antibody at 1/10000 dilution

Developed using the ECL technique.

Predicted band size: 76, 77 kDa

Please note: All products are "FOR RESEARCH USE ONLY. NOT FOR USE IN DIAGNOSTIC PROCEDURES"

Our Abpromise to you: Quality guaranteed and expert technical support

- Replacement or refund for products not performing as stated on the datasheet
- Valid for 12 months from date of delivery
- Response to your inquiry within 24 hours

- We provide support in Chinese, English, French, German, Japanese and Spanish
- Extensive multi-media technical resources to help you
- We investigate all quality concerns to ensure our products perform to the highest standards

If the product does not perform as described on this datasheet, we will offer a refund or replacement. For full details of the Abpromise, please visit <https://www.abcam.cn/abpromise> or contact our technical team.

Terms and conditions

- Guarantee only valid for products bought direct from Abcam or one of our authorized distributors