

Anti-RBBP4 antibody [EPR3411] - ChIP Grade ab79416

重组 RabMAb

14 References [14 图像](#)

概述

产品名称	Anti-RBBP4抗体[EPR3411] - ChIP Grade
描述	兔单克隆抗体[EPR3411] to RBBP4 - ChIP Grade
宿主	Rabbit
经测试应用	适用于: Flow Cyt (Intra), WB, IP, IHC-P, ChIP-sequencing, ICC/IF
种属反应性	与反应: Mouse, Rat, Human
免疫原	Synthetic peptide within Human RBBP4 aa 1-100 (N terminal). The exact sequence is proprietary. Database link: Q09028
阳性对照	WB: HeLa, Jurkat, NIH/3T3, 293 and HeLa, whole cell lysates. Mouse spleen, Rat spleen and Human fetal spleen tissue lysates; IHC-P: Human breast cancer, rat pancreas and Mouse cerebrum; Flow Cyt (intra): MCF7 cells; IP: HeLa cells; ICC/IF: MCF-7 and HeLa cells. ChIP-Seq: Chromatin from HeLa cells.
常规说明	<p>This product is a recombinant monoclonal antibody, which offers several advantages including:</p> <ul style="list-style-type: none"> - High batch-to-batch consistency and reproducibility - Improved sensitivity and specificity - Long-term security of supply - Animal-free production <p>For more information see here.</p> <p>Our RabMAb[®] technology is a patented hybridoma-based technology for making rabbit monoclonal antibodies. For details on our patents, please refer to RabMAb[®] patents.</p>

性能

形式	Liquid
存放说明	Shipped at 4°C. Store at +4°C short term (1-2 weeks). Upon delivery aliquot. Store at -20°C long term. Avoid freeze / thaw cycle.
存储溶液	pH: 7.20 Preservative: 0.01% Sodium azide Constituents: 40% Glycerol (glycerin, glycerine), 59% PBS, 0.05% BSA
纯度	Protein A purified
克隆	单克隆

克隆编号EPR3411

同种型IgG

应用

The Abpromise guarantee **Abpromise™**承诺保证使用ab79416于以下的经测试应用

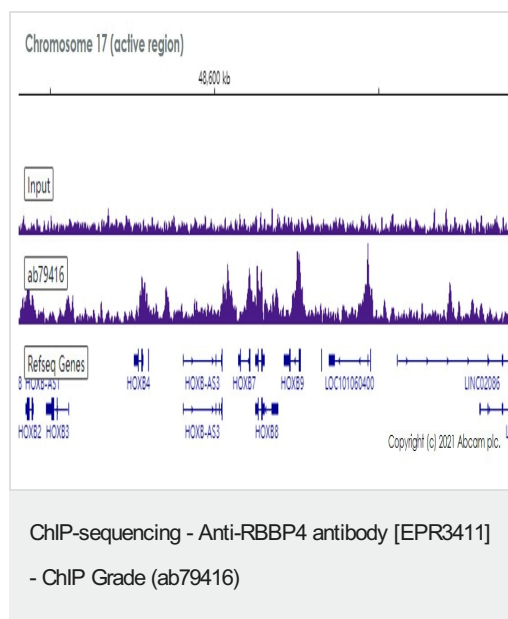
“应用说明”部分 下显示的仅为推荐的起始稀释度;实际最佳的稀释度/浓度应由使用者检定。

应用	Ab评论	说明
Flow Cyt (Intra)		1/20. ab172730 - Rabbit monoclonal IgG, is suitable for use as an isotype control with this antibody. For unpurified use at 1/50
WB		1/10000 - 1/50000. Detects a band of approximately 48 kDa (predicted molecular weight: 48 kDa).
IP		1/20. For unpurified use at 1/50
IHC-P		1/8000. Perform heat mediated antigen retrieval before commencing with IHC staining protocol. See <u>IHC antigen retrieval protocols.</u> For unpurified use at 1/100 - 1/250
ChIP-sequencing		Use 3 µg for 30 µg of chromatin.
ICC/IF		1/100 - 1/250.

靶标

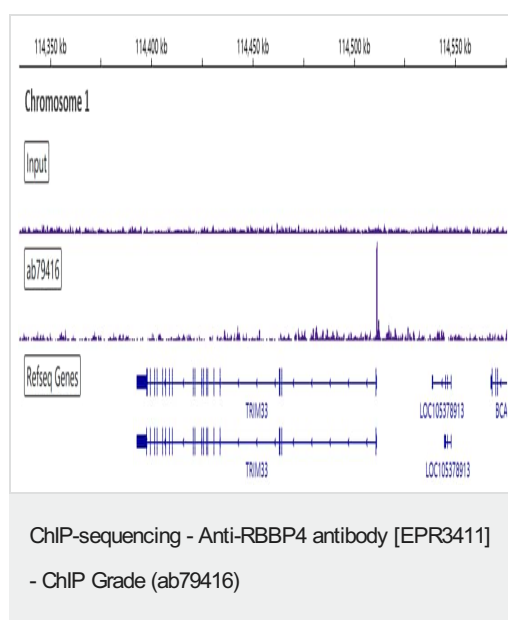
功能	Core histone-binding subunit that may target chromatin assembly factors, chromatin remodeling factors and histone deacetylases to their histone substrates in a manner that is regulated by nucleosomal DNA. Component of several complexes which regulate chromatin metabolism. These include the chromatin assembly factor 1 (CAF-1) complex, which is required for chromatin assembly following DNA replication and DNA repair; the core histone deacetylase (HDAC) complex, which promotes histone deacetylation and consequent transcriptional repression; the nucleosome remodeling and histone deacetylase complex (the NuRD complex), which promotes transcriptional repression by histone deacetylation and nucleosome remodeling; the PRC2/EED-EZH2 complex, which promotes repression of homeotic genes during development; and the NURF (nucleosome remodeling factor) complex.
序列相似性	Belongs to the WD repeat RBAP46/RBAP48/MSI1 family. Contains 6 WD repeats.
细胞定位	Nucleus.

图片



Chromatin was prepared from HeLa cells. Cells were fixed with 1% formaldehyde for 10 minutes. ChIP was performed with 10^7 HeLa cells and 8 μ g of ab79416 [EPR3411]. ChIP DNA was sequenced on the Illumina NovaSeq 6000 to a depth of 30 million reads.

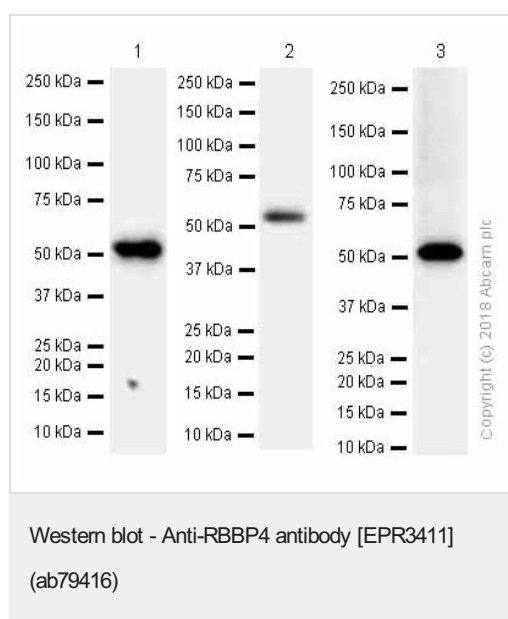
Additional screenshots of mapped reads can be downloaded [here](#).



Chromatin was prepared from HeLa cells. Cells were fixed with 1% formaldehyde for 10 minutes. ChIP was performed with 30 μ g of chromatin and 3 μ g of ab79416. ChIP DNA was sequenced on the Illumina NextSeq 500 to a depth of 30 million reads. ChIP-Seq validation performed by Active Motif, Carlsbad, CA.

Additional screenshots of mapped reads can be downloaded [here](#).

DOI: [10.7554/eLife.54993](#).



All lanes : Anti-RBBP4 antibody [EPR3411] - ChIP Grade (ab79416) at 0.006 μ g/ml (purified)

Lane 1 : HeLa (Human cervix adenocarcinoma epithelial cell) whole cell lysates

Lane 2 : Mouse spleen lysates

Lane 3 : Rat spleen lysates

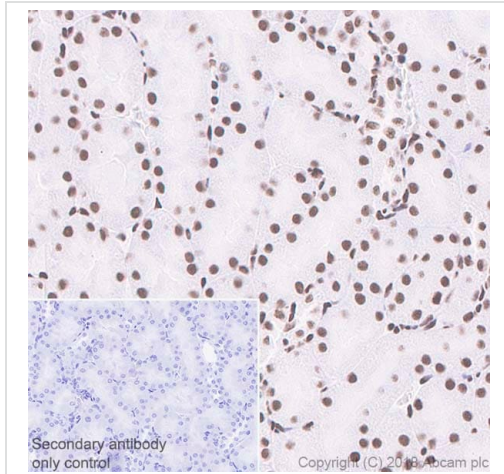
Lysates/proteins at 15 μ g per lane.

Secondary

All lanes : Goat Anti-Rabbit IgG H&L (HRP) ([ab97051](#)) at 1/20000 dilution

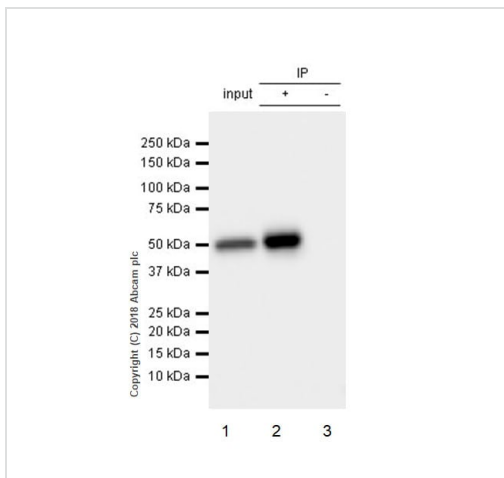
Predicted band size: 48 kDa

Blocking and diluting buffer: 5% NFDM/TBST.



Immunohistochemistry (Formalin/PFA-fixed paraffin-embedded sections) analysis of Rat pancreas tissue sections labeling RBBP4 with Purified ab79416 at 1:8000 dilution (0.014 µg/ml). Heat mediated antigen retrieval was performed using **ab93684** (Tris/EDTA buffer, pH 9.0) ImmunoHistoProbe one step HRP Polymer (ready to use) was used as the secondary antibody. Negative control: PBS instead of the primary antibody. Hematoxylin was used as a counterstain

Immunohistochemistry (Formalin/PFA-fixed paraffin-embedded sections) - Anti-RBBP4 antibody [EPR3411] (ab79416)



Immunoprecipitation - Anti-RBBP4 antibody [EPR3411] (ab79416)

ab79416 (purified) at 1:20 dilution (2µg) immunoprecipitating RBBP4 in HeLa whole cell lysate.

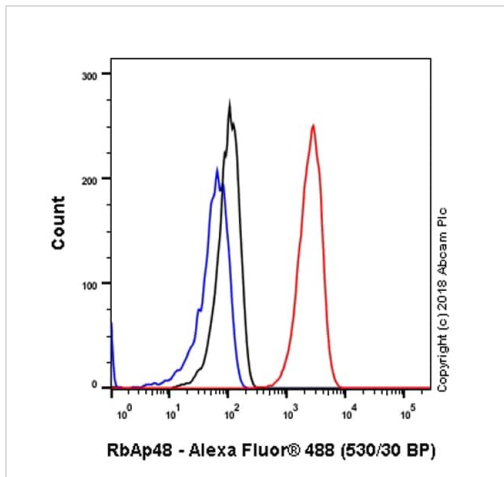
Lane 1 (input): HeLa (Human cervix adenocarcinoma epithelial cell) whole cell lysate 10µg

Lane 2 (+): ab79416 & HeLa whole cell lysate

Lane 3 (-): Rabbit monoclonal IgG (**ab172730**) instead of ab79416 in HeLa whole cell lysate

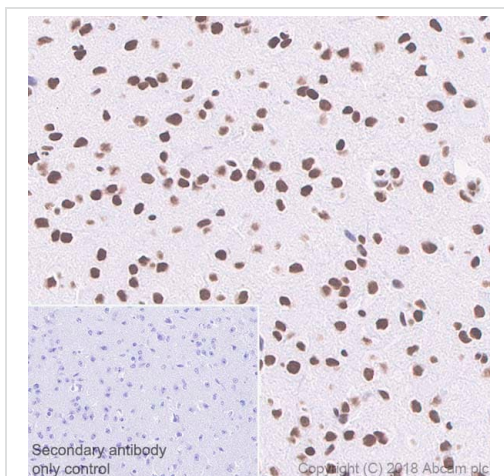
For western blotting, VeriBlot for IP Detection Reagent (HRP) (**ab131366**) was used for detection at 1:1000 dilution.

Blocking and diluting buffer: 5% NFDM/TBST.



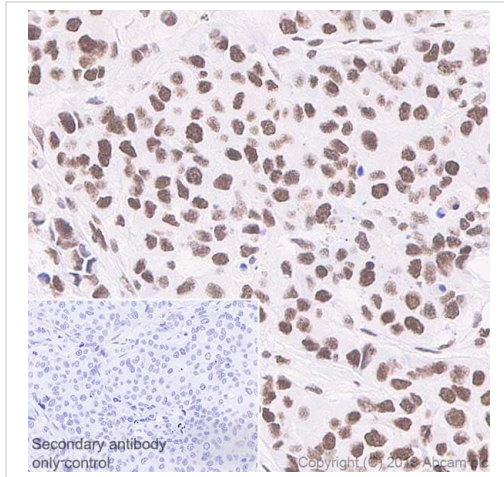
Flow Cytometry (Intracellular) - Anti-RBBP4 antibody
[EPR3411] - ChIP Grade (ab79416)

Intracellular Flow Cytometry analysis of MCF7 (Human breast adenocarcinoma epithelial cell) cells labeling RBBP4 with purified ab79416 at 1/20 dilution (10 µg/ml) (red). Cells were fixed with 4% Paraformaldehyde. A Goat anti rabbit IgG (Alexa Fluor® 488) secondary antibody was used at 1/2000 dilution. Isotype control - Rabbit monoclonal IgG (Black). Unlabeled control - Cell without incubation with primary antibody and secondary antibody (Blue).



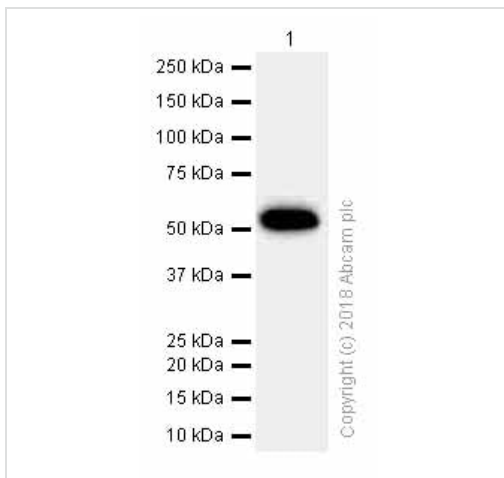
Immunohistochemistry (Formalin/PFA-fixed paraffin-embedded sections) - Anti-RBBP4 antibody
[EPR3411] (ab79416)

Immunohistochemistry (Formalin/PFA-fixed paraffin-embedded sections) analysis of Mouse cerebrum tissue sections labeling RBBP4 with Purified ab79416 at 1:8000 dilution (0.014 µg/ml). Heat mediated antigen retrieval was performed using [ab93684](#) (Tris/EDTA buffer, pH 9.0) ImmunoHistoProbe one step HRP Polymer (ready to use) was used as the secondary antibody. Negative control: PBS instead of the primary antibody. Hematoxylin was used as a counterstain



Immunohistochemistry (Formalin/PFA-fixed paraffin-embedded sections) - Anti-RBBP4 antibody [EPR3411] (ab79416)

Immunohistochemistry (Formalin/PFA-fixed paraffin-embedded sections) analysis of Human breast cancer tissue sections labeling RBBP4 with Purified ab79416 at 1:8000 dilution (0.014 µg/ml). Heat mediated antigen retrieval was performed using **ab93684** (Tris/EDTA buffer, pH 9.0) ImmunoHistoProbe one step HRP Polymer (ready to use) was used as the secondary antibody. Negative control: PBS instead of the primary antibody. Hematoxylin was used as a counterstain



Western blot - Anti-RBBP4 antibody [EPR3411] (ab79416)

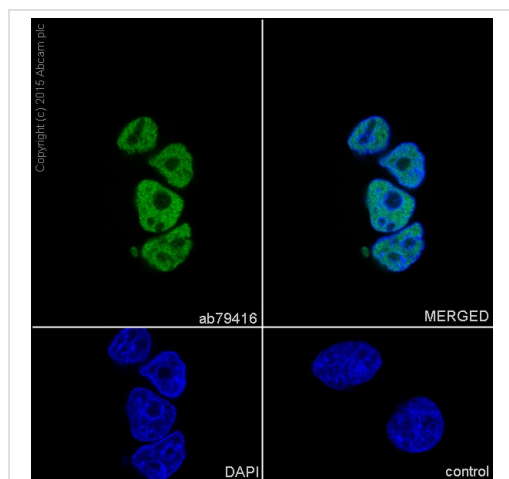
Anti-RBBP4 antibody [EPR3411] - ChIP Grade (ab79416) at 0.006 µg/ml (purified) + Human fetal spleen lysates at 15 µg

Secondary

Goat Anti-Rabbit IgG (HRP) with minimal cross-reactivity with human IgG at 1/2000 dilution

Predicted band size: 48 kDa

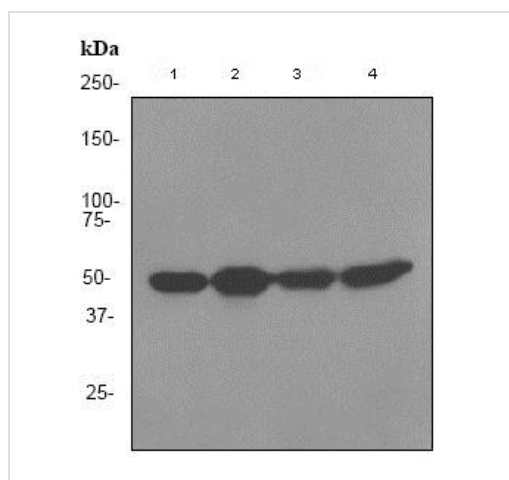
Blocking and diluting buffer: 5% NFDM/TBST.



Immunocytochemistry/ Immunofluorescence - Anti-RBBP4 antibody [EPR3411] - ChIP Grade (ab79416)

ab79416 staining RBBP4 in MCF-7 (human breast carcinoma) cells by ICC (Immunocytochemistry). Cells were fixed with 4% Paraformaldehyde and permeabilized with 0.1% tritonX-100. Samples were incubated with primary antibody at a dilution of 1/500. A goat anti rabbit IgG (Alexa Fluor® 488) ([ab150077](#)) was used as the secondary antibody at a dilution of 1/1000. DAPI was used as a nuclear counterstain.

Negative control 1: PBS only.



Western blot - Anti-RBBP4 antibody [EPR3411] (ab79416)

All lanes : Anti-RBBP4 antibody [EPR3411] - ChIP Grade (ab79416) at 1/50000 dilution (Unpurified)

Lane 1 : HeLa lysate

Lane 2 : Jurkat lysate

Lane 3 : NIH/3T3 lysate

Lane 4 : 293 lysate

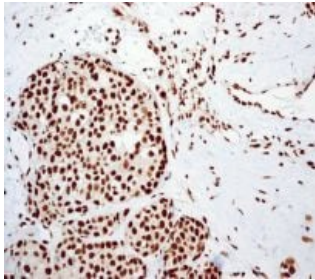
Lysates/proteins at 10 µg per lane.

Secondary

All lanes : HRP labelled goat anti-rabbit at 1/2000 dilution

Predicted band size: 48 kDa

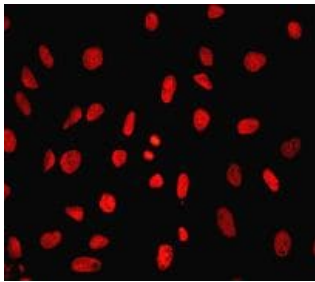
Observed band size: 48 kDa



Unpurified ab79416, at 1/100 dilution, staining RBBP4 in human breast carcinoma tissue by Immunohistochemistry.

Heat mediated antigen retrieval was performed before commencing with IHC staining protocol.

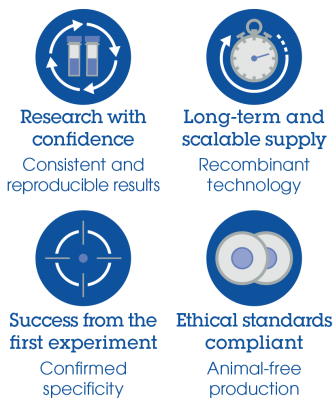
Immunohistochemistry (Formalin/PFA-fixed paraffin-embedded sections) - Anti-RBBP4 antibody [EPR3411] (ab79416)



Immunocytochemical staining of RBBP4 in HeLa cells using unpurified ab79416 at 1/100 dilution.

Immunocytochemistry/ Immunofluorescence - Anti-RBBP4 antibody [EPR3411] - ChIP Grade (ab79416)

Why choose a recombinant antibody?



Anti-RBBP4 antibody [EPR3411] (ab79416)

Please note: All products are "FOR RESEARCH USE ONLY. NOT FOR USE IN DIAGNOSTIC PROCEDURES"

Our Abpromise to you: Quality guaranteed and expert technical support

- Replacement or refund for products not performing as stated on the datasheet
- Valid for 12 months from date of delivery
- Response to your inquiry within 24 hours

- We provide support in Chinese, English, French, German, Japanese and Spanish
- Extensive multi-media technical resources to help you
- We investigate all quality concerns to ensure our products perform to the highest standards

If the product does not perform as described on this datasheet, we will offer a refund or replacement. For full details of the Abpromise, please visit <https://www.abcam.cn/abpromise> or contact our technical team.

Terms and conditions

- Guarantee only valid for products bought direct from Abcam or one of our authorized distributors