

Anti-RARRES1 antibody ab76530

[2 References](#) [1 图像](#)

概述

产品名称	Anti-RARRES1抗体
描述	兔多克隆抗体to RARRES1
宿主	Rabbit
经测试应用	适用于: WB
种属反应性	与反应: Human
免疫原	Synthetic peptide corresponding to RARRES1 aa 150-250 conjugated to keyhole limpet haemocyanin. (Peptide available as ab87448)
阳性对照	Recombinant Human RARRES1 protein (ab114592) can be used as a positive control in WB. This antibody gave a positive signal in the following lysates: Human Liver Tissue; Human Kidney Tissue; HepG2 Whole Cell; HEK293 Whole Cell
常规说明	<p>The Life Science industry has been in the grips of a reproducibility crisis for a number of years. Abcam is leading the way in addressing this with our range of recombinant monoclonal antibodies and knockout edited cell lines for gold-standard validation. Please check that this product meets your needs before purchasing.</p> <p>If you have any questions, special requirements or concerns, please send us an inquiry and/or contact our Support team ahead of purchase. Recommended alternatives for this product can be found below, along with publications, customer reviews and Q&As</p>

性能

形式	Liquid
存放说明	Shipped at 4°C. Store at +4°C short term (1-2 weeks). Upon delivery aliquot. Store at -20°C or -80°C. Avoid freeze / thaw cycle.
存储溶液	pH: 7.40 Preservative: 0.02% Sodium azide Constituent: PBS
纯度	Immunogen affinity purified

Batches of this product that have a concentration < 1mg/ml may have BSA added as a stabilising agent. If you would like information about the formulation of a specific lot, please contact our scientific support team who will be happy to help.

克隆 多克隆

同种型 IgG

应用

The Abpromise guarantee **Abpromise™** 承诺保证使用 ab76530 于以下的经测试应用

“应用说明”部分 下显示的仅为推荐的起始稀释度;实际最佳的稀释度/浓度应由使用者检定。

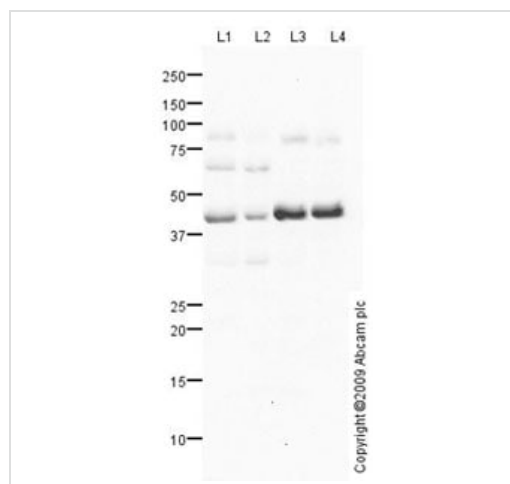
应用	Ab评论	说明
WB		Use a concentration of 1 µg/ml. Detects a band of approximately 40 kDa (predicted molecular weight: 33 kDa).

靶标

序列相似性 Belongs to the protease inhibitor I47 (latexin) family.

细胞定位 Membrane.

图片



Western blot - Anti-RARRES1 antibody (ab76530)

All lanes : Anti-RARRES1 antibody (ab76530) at 1 µg/ml

Lane 1 : Human liver tissue lysate - total protein ([ab29889](#))

Lane 2 : Human kidney tissue lysate - total protein ([ab30203](#))

Lane 3 : HepG2 (Human hepatocellular liver carcinoma cell line)
Whole Cell Lysate

Lane 4 : HEK293 (Human embryonic kidney cell line) Whole Cell
Lysate

Lysates/proteins at 10 µg per lane.

Secondary

All lanes : Goat polyclonal to Rabbit IgG - H&L - Pre-Adsorbed
(HRP) at 1/3000 dilution

Developed using the ECL technique.

Performed under reducing conditions.

Predicted band size: 33 kDa

Observed band size: 40 kDa

Additional bands at: 62 kDa, 80 kDa. We are unsure as to the
identity of these extra bands.

RARRES1 contains a number of potential glycosylation sites (SwissProt) which may explain its migration at a higher molecular weight than predicted.

Please note: All products are "FOR RESEARCH USE ONLY. NOT FOR USE IN DIAGNOSTIC PROCEDURES"

Our Abpromise to you: Quality guaranteed and expert technical support

- Replacement or refund for products not performing as stated on the datasheet
- Valid for 12 months from date of delivery
- Response to your inquiry within 24 hours

- We provide support in Chinese, English, French, German, Japanese and Spanish
- Extensive multi-media technical resources to help you
- We investigate all quality concerns to ensure our products perform to the highest standards

If the product does not perform as described on this datasheet, we will offer a refund or replacement. For full details of the Abpromise, please visit <https://www.abcam.cn/abpromise> or contact our technical team.

Terms and conditions

- Guarantee only valid for products bought direct from Abcam or one of our authorized distributors