

Anti-RAPH1 antibody ab121619

[1 References](#) [2 图像](#)

概述

产品名称	Anti-RAPH1抗体
描述	兔多克隆抗体to RAPH1
宿主	Rabbit
经测试应用	适用于: ICC/IF, IHC-P
种属反应性	与反应: Human
免疫原	Recombinant fragment corresponding to Human RAPH1 aa 1100 to the C-terminus (C terminal). Database link: Q70E73-10
阳性对照	Human duodenum tissue.
常规说明	<p>The Life Science industry has been in the grips of a reproducibility crisis for a number of years. Abcam is leading the way in addressing this with our range of recombinant monoclonal antibodies and knockout edited cell lines for gold-standard validation. Please check that this product meets your needs before purchasing.</p> <p>If you have any questions, special requirements or concerns, please send us an inquiry and/or contact our Support team ahead of purchase. Recommended alternatives for this product can be found below, along with publications, customer reviews and Q&As</p>

性能

形式	Liquid
存放说明	Shipped at 4°C. Upon delivery aliquot and store at -20°C. Avoid repeated freeze / thaw cycles.
存储溶液	<p>pH: 7.20</p> <p>Preservative: 0.02% Sodium azide</p> <p>Constituents: 40% Glycerol (glycerin, glycerine), 59% PBS</p>
纯度	Immunogen affinity purified
克隆	多克隆
同种型	IgG

应用

The Abpromise guarantee

Abpromise™ 承诺保证使用ab121619于以下的经测试应用

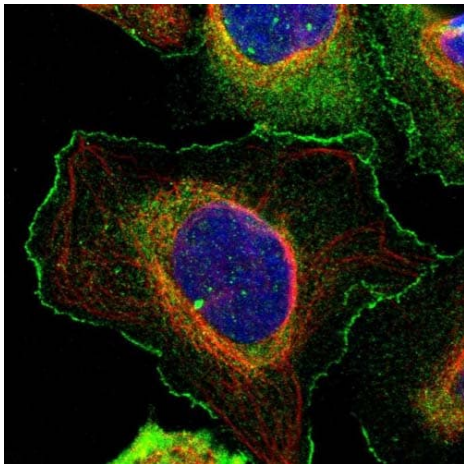
“应用说明”部分 下显示的仅为推荐的起始稀释度;实际最佳的稀释度/浓度应由使用者检定。

应用	Ab评论	说明
ICC/IF		Use a concentration of 1 - 4 µg/ml. Recommend PFA Fixation and Triton X-100 treatment
IHC-P		1/50 - 1/200. Perform heat mediated antigen retrieval with citrate buffer pH 6 before commencing with IHC staining protocol. pH 6

靶标

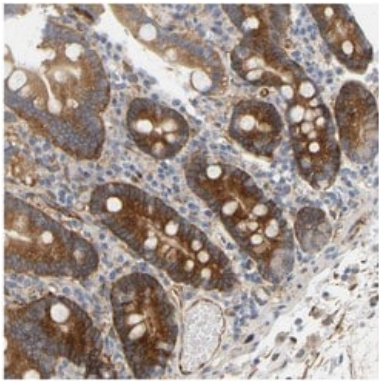
功能	Mediator of localized membrane signals. Implicated in the regulation of lamellipodial dynamics. Negatively regulates cell adhesion.
组织特异性	Isoform RMO1-RAPH1 is ubiquitously expressed with highest levels in brain, heart, ovary and developing embryo. Isoform RMO1 is widely expressed with highest levels in liver. Low expression in B-cells.
序列相似性	Belongs to the MRL family. Contains 1 PH domain. Contains 1 Ras-associating domain.
细胞定位	Cell membrane. Cell projection > lamellipodium. Cell projection > filopodium. Cytoplasm > cytoskeleton. Recruited to the membrane, via the PH domain, by the phosphoinositide, PI(3,4)P2. Colocalizes with ENAH/VASP at the tips of lamellipodia and filopodia. Also colocalizes with the pathogens, Vaccinia and Enteropathogenic E.coli (EPEC) at the interface between the pathogen and their actin.

图片



Immunofluorescent staining of Human cell line U-2 OS shows positivity in nucleus, plasma membrane and cytoplasm.
Recommended concentration of ab121619 1-4 µg/ml. Cells treated with PFA/Triton X-100.

Immunocytochemistry/ Immunofluorescence - Anti-RAPH1 antibody (ab121619)



ab121619 at 1/75 staining RALPH1 in Paraffin Embedded Human duodenum tissue. Note strong cytoplasmic positivity in glandular cells.

Immunohistochemistry (Formalin/PFA-fixed paraffin-embedded sections) - Anti-RALPH1 antibody (ab121619)

Please note: All products are "FOR RESEARCH USE ONLY. NOT FOR USE IN DIAGNOSTIC PROCEDURES"

Our Abpromise to you: Quality guaranteed and expert technical support

- Replacement or refund for products not performing as stated on the datasheet
- Valid for 12 months from date of delivery
- Response to your inquiry within 24 hours
- We provide support in Chinese, English, French, German, Japanese and Spanish
- Extensive multi-media technical resources to help you
- We investigate all quality concerns to ensure our products perform to the highest standards

If the product does not perform as described on this datasheet, we will offer a refund or replacement. For full details of the Abpromise, please visit <https://www.abcam.cn/abpromise> or contact our technical team.

Terms and conditions

- Guarantee only valid for products bought direct from Abcam or one of our authorized distributors