




### Anti-RanBP2 antibody ab2938

**9 References**   **2 图像**

#### 概述

产品名称	Anti-RanBP2抗体
描述	兔多克隆抗体to RanBP2
宿主	Rabbit
特异性	Detects Ran binding protein 2 (RanBP 2) from human and bovine retina.
经测试应用	适用于: IHC-P, WB
种属反应性	与反应: Cow, Human 预测可用于: Chimpanzee 
免疫原	Synthetic peptide corresponding to Human RanBP2 aa 1-18. Sequence: MRRSKADVERYIASVQGS  (Peptide available as <a href="#">ab4939</a> )  <a href="#">Run BLAST with</a>  <a href="#">Run BLAST with</a>
阳性对照	IHC-P: Bovine retinal extracts. WB: Human retinal extracts.
常规说明	<p>The Life Science industry has been in the grips of a reproducibility crisis for a number of years. Abcam is leading the way in addressing this with our range of recombinant monoclonal antibodies and knockout edited cell lines for gold-standard validation. Please check that this product meets your needs before purchasing.</p> <p>If you have any questions, special requirements or concerns, please send us an inquiry and/or contact our Support team ahead of purchase. Recommended alternatives for this product can be found below, along with publications, customer reviews and Q&amp;As</p>

#### 性能

形式	Liquid
存放说明	Shipped at 4°C. Store at +4°C short term (1-2 weeks). Upon delivery aliquot. Store at -20°C or -80°C. Avoid freeze / thaw cycle.
存储溶液	Preservative: 0.05% Sodium azide Constituents: 0.1% BSA, 99% PBS
纯度	Immunogen affinity purified

克隆

多克隆

同种型

IgG

应用

The Abpromise guarantee      **Abpromise™**承诺保证使用ab2938于以下的经测试应用

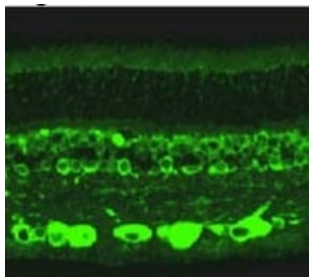
“应用说明”部分 下显示的仅为推荐的起始稀释度;实际最佳的稀释度/浓度应由使用者检定。

应用	Ab评论	说明
IHC-P		Use a concentration of 10 µg/ml. Immunohistochemical staining of bovine retina results in cytoplasmic staining of cells within the inner nuclear layer as well as the ganglion cells.
WB		Use a concentration of 1 µg/ml. Detects a band of approximately 360 kDa (predicted molecular weight: 358 kDa).Can be blocked with <b>RanBP2 peptide (ab4939)</b> . Detects a band of approximately 360 kDa representing RanBP 2 from bovine retinal extracts.

靶标

功能	E3 SUMO-protein ligase which facilitates SUMO1 and SUMO2 conjugation by UBE2I. Involved in transport factor (Ran-GTP, karyopherin)-mediated protein import via the F-G repeat-containing domain which acts as a docking site for substrates. Could also have isomerase or chaperone activity and may bind RNA or DNA. Component of the nuclear export pathway. Specific docking site for the nuclear export factor exportin-1.
通路	Protein modification; protein sumoylation.
疾病相关	Defects in RANBP2 are the cause of susceptibility to encephalopathy acute necrotizing type 1 (ANE1) [MIM:608033]. A rapidly progressive encephalopathy manifesting in susceptible individuals with seizures and coma. It can occur within days in otherwise healthy children after common viral infections such as influenza and parainfluenza, without evidence of viral infection of the brain or inflammatory cell infiltration. Brain T2-weighted magnetic resonance imaging reveals characteristic symmetric lesions present in the thalami, pons and brainstem.
序列相似性	Contains 1 PPlase cyclophilin-type domain. Contains 4 RanBD1 domains. Contains 8 RanBP2-type zinc fingers. Contains 1 TPR repeat.
结构域	Contains F-X-F-G repeats.
翻译后修饰	Polyubiquitinated by PARK2, which leads to proteasomal degradation.
细胞定位	Nucleus > nuclear pore complex. Cytoplasmic filaments.

图片



Immunohistochemical staining of RanBP2 in bovine retina using ab2938.

Immunohistochemistry (Formalin/PFA-fixed paraffin-embedded sections) - Anti-RanBP2 antibody (ab2938)

175kDa  
97kDa

Western blot of RanBP2 from human retinal extracts using ab2938.

Western blot - Anti-RanBP2 antibody (ab2938)

**Please note:** All products are "FOR RESEARCH USE ONLY. NOT FOR USE IN DIAGNOSTIC PROCEDURES"

### Our Abpromise to you: Quality guaranteed and expert technical support

- Replacement or refund for products not performing as stated on the datasheet
- Valid for 12 months from date of delivery
- Response to your inquiry within 24 hours
- We provide support in Chinese, English, French, German, Japanese and Spanish
- Extensive multi-media technical resources to help you
- We investigate all quality concerns to ensure our products perform to the highest standards

If the product does not perform as described on this datasheet, we will offer a refund or replacement. For full details of the Abpromise, please visit <https://www.abcam.cn/abpromise> or contact our technical team.

### Terms and conditions

- Guarantee only valid for products bought direct from Abcam or one of our authorized distributors