

Anti-RanBP2 antibody ab112061

[2 References](#) [2 图像](#)

概述

产品名称	Anti-RanBP2抗体
描述	兔多克隆抗体to RanBP2
宿主	Rabbit
经测试应用	适用于: WB, IP
种属反应性	与反应: Human
免疫原	Synthetic peptide, corresponding to a region within amino acids 1050-1100 of Human RanBP2 (NP_006258.3).
阳性对照	HeLa Whole cell lysate.
常规说明	<p>The Life Science industry has been in the grips of a reproducibility crisis for a number of years. Abcam is leading the way in addressing this with our range of recombinant monoclonal antibodies and knockout edited cell lines for gold-standard validation. Please check that this product meets your needs before purchasing.</p> <p>If you have any questions, special requirements or concerns, please send us an inquiry and/or contact our Support team ahead of purchase. Recommended alternatives for this product can be found below, along with publications, customer reviews and Q&As</p>

性能

形式	Liquid
存放说明	Shipped at 4°C. Upon delivery aliquot and store at -20°C. Avoid freeze / thaw cycles.
存储溶液	Preservative: 0.09% Sodium azide Constituents: 99% Tris buffered saline, 0.1% BSA
纯度	Immunogen affinity purified
纯化说明	ab112061 was affinity purified using an epitope specific to RanBP2 immobilized on solid support.
克隆	多克隆
同种型	IgG

应用

The Abpromise guarantee

Abpromise™ 承诺保证使用ab112061于以下的经测试应用

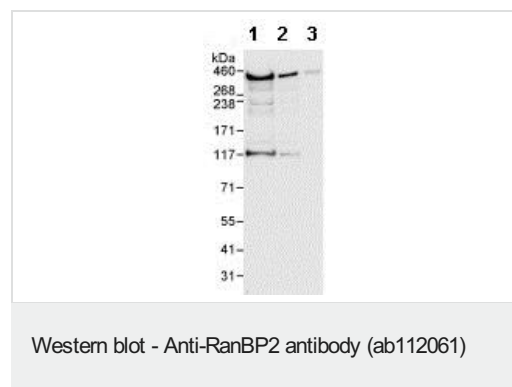
“应用说明”部分 下显示的仅为推荐的起始稀释度;实际最佳的稀释度/浓度应由使用者检定。

应用	Ab评论	说明
WB		1/2000 - 1/10000. Predicted molecular weight: 358 kDa.
IP		Use at 2-5 µg/mg of lysate.

靶标

功能	E3 SUMO-protein ligase which facilitates SUMO1 and SUMO2 conjugation by UBE2I. Involved in transport factor (Ran-GTP, karyopherin)-mediated protein import via the F-G repeat-containing domain which acts as a docking site for substrates. Could also have isomerase or chaperone activity and may bind RNA or DNA. Component of the nuclear export pathway. Specific docking site for the nuclear export factor exportin-1.
通路	Protein modification; protein sumoylation.
疾病相关	Defects in RANBP2 are the cause of susceptibility to encephalopathy acute necrotizing type 1 (ANE1) [MIM:608033]. A rapidly progressive encephalopathy manifesting in susceptible individuals with seizures and coma. It can occur within days in otherwise healthy children after common viral infections such as influenza and parainfluenza, without evidence of viral infection of the brain or inflammatory cell infiltration. Brain T2-weighted magnetic resonance imaging reveals characteristic symmetric lesions present in the thalami, pons and brainstem.
序列相似性	Contains 1 PPlase cyclophilin-type domain. Contains 4 RanBD1 domains. Contains 8 RanBP2-type zinc fingers. Contains 1 TPR repeat.
结构域	Contains F-X-F-G repeats.
翻译后修饰	Polyubiquitinated by PARK2, which leads to proteasomal degradation.
细胞定位	Nucleus > nuclear pore complex. Cytoplasmic filaments.

图片



All lanes : Anti-RanBP2 antibody (ab112061) at 0.04 µg/ml

Lane 1 : Hela whole cell lysate at 50 µg

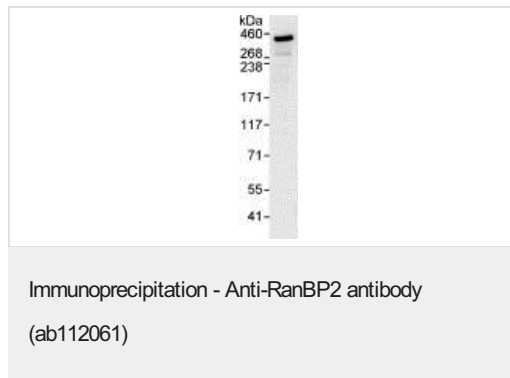
Lane 2 : Hela whole cell lysate at 15 µg

Lane 3 : Hela whole cell lysate at 5 µg

Developed using the ECL technique.

Predicted band size: 358 kDa

Exposure time: 10 seconds



Detection of RanBP2 by Western Blot of Immunoprecipitate.
ab112061 at 0.1µg/ml staining RanBP2 in HeLa whole cell lysate immunoprecipitated using ab112061 at 3µg/mg lysate (1 mg/IP; 20% of IP loaded/lane).
Detection: Chemiluminescence with exposure time of 3 seconds.

Please note: All products are "FOR RESEARCH USE ONLY. NOT FOR USE IN DIAGNOSTIC PROCEDURES"

Our Abpromise to you: Quality guaranteed and expert technical support

- Replacement or refund for products not performing as stated on the datasheet
- Valid for 12 months from date of delivery
- Response to your inquiry within 24 hours
- We provide support in Chinese, English, French, German, Japanese and Spanish
- Extensive multi-media technical resources to help you
- We investigate all quality concerns to ensure our products perform to the highest standards

If the product does not perform as described on this datasheet, we will offer a refund or replacement. For full details of the Abpromise, please visit <https://www.abcam.cn/abpromise> or contact our technical team.

Terms and conditions

- Guarantee only valid for products bought direct from Abcam or one of our authorized distributors