

### Anti-RanBP1 antibody ab17034

#### 5 图像

#### 概述

---

产品名称	Anti-RanBP1抗体
描述	山羊多克隆抗体to RanBP1
宿主	Goat
经测试应用	适用于: Flow Cyt, ICC/IF, WB, IHC-P
种属反应性	与反应: Human
免疫原	Synthetic peptide corresponding to Human RanBP1 aa 150 to the C-terminus. Database link: <a href="#">P43487</a> <a href="#">Run BLAST with</a> <a href="#">Run BLAST with</a>
阳性对照	WB: Human duodenum lysate. A431, HeLa and MCF7 whole cell lysate. ICC/IF: HEK293 and HeLa cells. Flow Cyt: HEK293 cells
常规说明	<p>The Life Science industry has been in the grips of a reproducibility crisis for a number of years. Abcam is leading the way in addressing this with our range of recombinant monoclonal antibodies and knockout edited cell lines for gold-standard validation. Please check that this product meets your needs before purchasing.</p> <p>If you have any questions, special requirements or concerns, please send us an inquiry and/or contact our Support team ahead of purchase. Recommended alternatives for this product can be found below, along with publications, customer reviews and Q&amp;As</p>

#### 性能

---

形式	Liquid
存放说明	Shipped at 4°C. Upon delivery aliquot and store at -20°C. Avoid freeze / thaw cycles.
存储溶液	pH: 7.30 Preservative: 0.02% Sodium azide Constituents: Tris buffered saline, 0.5% BSA
纯度	Immunogen affinity purified
克隆	多克隆
同种型	IgG

#### 应用

---

“应用说明”部分下显示的仅为推荐的起始稀释度;实际最佳的稀释度/浓度应由使用者检定。

应用	Ab评论	说明
Flow Cyt		Use a concentration of 10 µg/ml.
ICC/IF		Use a concentration of 10 µg/ml.
WB		Use a concentration of 0.05 - 0.1 µg/ml. Detects a band of approximately 28-30 kDa (predicted molecular weight: 23 kDa). A 1 hour primary incubation is recommended for this product.
IHC-P		Use a concentration of 3 - 5 µg/ml.

## 靶标

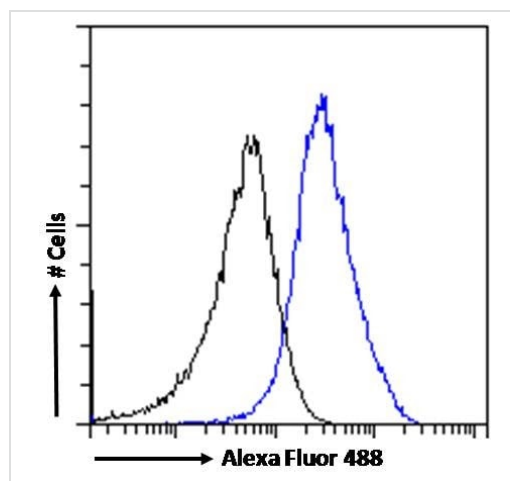
### 功能

Inhibits GTP exchange on Ran. Forms a Ran-GTP-RANBP1 trimeric complex. Increase GTP hydrolysis induced by the Ran GTPase activating protein RANGAP1. May act in an intracellular signaling pathway which may control the progression through the cell cycle by regulating the transport of protein and nucleic acids across the nuclear membrane.

### 序列相似性

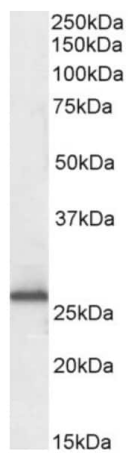
Belongs to the RANBP1 family.  
Contains 1 RanBD1 domain.

## 图片



Flow Cytometry - Anti-RanBP1 antibody (ab17034)

Flow cytometric analysis of paraformaldehyde fixed HEK293 cells (blue line), permeabilized with 0.5% Triton. Primary incubation 1hr (10µg/mL) followed by Alexa Fluor 488 secondary antibody (1µg/mL). IgG control: Unimmunized goat IgG (black line) followed by Alexa Fluor 488 secondary antibody.

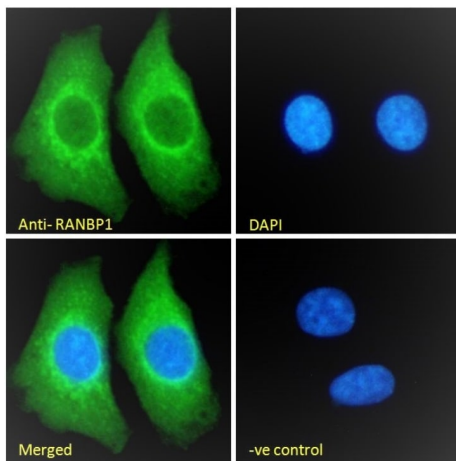


Western blot - Anti-RanBP1 antibody (ab17034)

Anti-RanBP1 antibody (ab17034) at 0.3  $\mu\text{g/ml}$  + Human duodenum lysate (RIPA buffer) at 35  $\mu\text{g}$

**Predicted band size:** 23 kDa

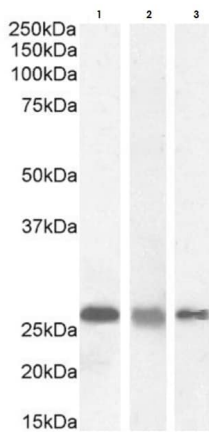
Detected by chemiluminescence.



Immunocytochemistry/ Immunofluorescence - Anti-RanBP1 antibody (ab17034)

Immunofluorescence analysis of paraformaldehyde fixed HEK-293 (Human epithelial cell line from embryonic kidney) cells, permeabilized with 0.15% Triton. Primary incubation 1hr (10  $\mu\text{g/ml}$ ) followed by Alexa Fluor 488<sup>®</sup> secondary antibody (2  $\mu\text{g/ml}$ ), showing cytoplasmic staining. The nuclear stain is DAPI (blue).

**Negative control:** Non-immunized goat IgG (10  $\mu\text{g/ml}$ ) followed by Alexa Fluor 488<sup>®</sup> secondary antibody (2  $\mu\text{g/ml}$ ).



Western blot - Anti-RanBP1 antibody (ab17034)

**Lane 1 :** Anti-RanBP1 antibody (ab17034) at 0.03 µg/ml

**Lane 2 :** Anti-RanBP1 antibody (ab17034) at 0.5 µg/ml

**Lane 3 :** Anti-RanBP1 antibody (ab17034) at 0.1 µg/ml

**Lane 1 :** A-431 (Human epidermoid carcinoma cell line) whole cell lysate

**Lane 2 :** HeLa (Human epithelial cell line from cervix adenocarcinoma) whole cell lysate

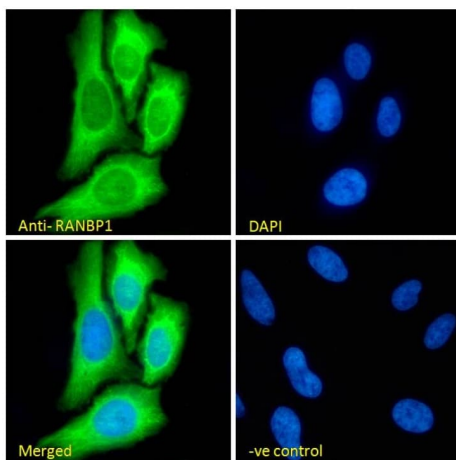
**Lane 3 :** MCF7 (Human breast adenocarcinoma cell line) whole cell lysate

Lysates/proteins at 35 µg per lane.

**Predicted band size:** 23 kDa

Detected by chemiluminescence.

Lysates in RIPA buffer.



Immunocytochemistry/ Immunofluorescence - Anti-RanBP1 antibody (ab17034)

Immunofluorescence analysis of paraformaldehyde fixed HeLa (Human epithelial cell line from cervix adenocarcinoma) cells, permeabilized with 0.15% Triton. Primary incubation 1hr (10 µg/ml) followed by Alexa Fluor 488<sup>®</sup> secondary antibody (2 µg/ml), showing cytoplasmic staining. The nuclear stain is DAPI (blue).

**Negative control:** Non-immunized goat IgG (10 µg/ml) followed by Alexa Fluor 488<sup>®</sup> secondary antibody (2 µg/ml).

**Please note:** All products are "FOR RESEARCH USE ONLY. NOT FOR USE IN DIAGNOSTIC PROCEDURES"

### **Our Abpromise to you: Quality guaranteed and expert technical support**

---

- Replacement or refund for products not performing as stated on the datasheet
- Valid for 12 months from date of delivery
- Response to your inquiry within 24 hours
- We provide support in Chinese, English, French, German, Japanese and Spanish
- Extensive multi-media technical resources to help you
- We investigate all quality concerns to ensure our products perform to the highest standards

If the product does not perform as described on this datasheet, we will offer a refund or replacement. For full details of the Abpromise, please visit <https://www.abcam.cn/abpromise> or contact our technical team.

### **Terms and conditions**

---

- Guarantee only valid for products bought direct from Abcam or one of our authorized distributors