

# Anti-RAI1 antibody ab86599

### 3 图像

#### 概述

产品名称	Anti-RAI1 抗体
描述	兔多克隆抗体 to RAI1
宿主	Rabbit
经测试应用	适用于: IHC-P, WB, IP
种属反应性	与反应: Human 预测可用于: Chimpanzee, Gorilla, Orangutan 
免疫原	Synthetic peptide corresponding to Human RAI1 aa 1-100. Database link: <a href="#">Q7Z5J4</a>
常规说明	<p>The Life Science industry has been in the grips of a reproducibility crisis for a number of years. Abcam is leading the way in addressing this with our range of recombinant monoclonal antibodies and knockout edited cell lines for gold-standard validation. Please check that this product meets your needs before purchasing.</p> <p>If you have any questions, special requirements or concerns, please send us an inquiry and/or contact our Support team ahead of purchase. Recommended alternatives for this product can be found below, along with publications, customer reviews and Q&amp;As</p>

#### 性能

形式	Liquid
存放说明	Shipped at 4°C. Upon delivery aliquot and store at -20°C. Avoid freeze / thaw cycles.
存储溶液	pH: 7 Preservative: 0.09% Sodium azide Constituent: Tris citrate/phosphate
纯度	Immunogen affinity purified
克隆	多克隆
同种型	IgG

#### 应用

The Abpromise guarantee

**Abpromise™** 承诺保证使用 ab86599 于以下的经测试应用

“应用说明”部分 下显示的仅为推荐的起始稀释度;实际最佳的稀释度/浓度应由使用者检定。

应用	Ab评论	说明
IHC-P		1/500 - 1/2000. Perform heat mediated antigen retrieval with citrate buffer pH 6 before commencing with IHC staining protocol.
WB		1/2000 - 1/10000. Predicted molecular weight: 203 kDa.
IP		Use at 10 µg/mg of lysate.

## 靶标

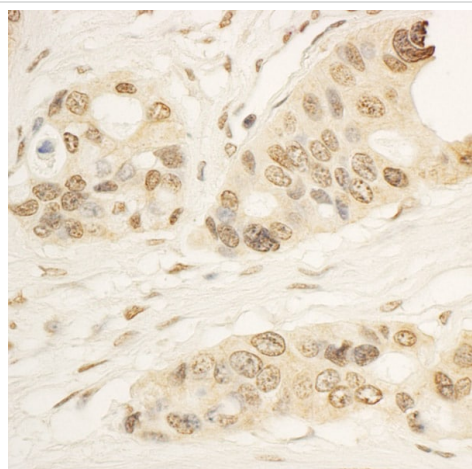
### 相关性

RAI1 (retinoid-acid induced protein 1) may be involved in neuronal differentiation. RAI1 is highly similar to its mouse counterpart and is expressed at high levels mainly in neuronal tissues. RAI1 has a polymorphic polyglutamine tract in it's N-terminal domain. Expression of the mouse counterpart in neurons is induced by retinoic acid. The RAI1 gene is associated with both the severity of the phenotype and the response to medication in schizophrenic patients. Defects in RAI1 are a cause of Smith-Magenis syndrome (SMS). There are four named isoforms.

### 细胞定位

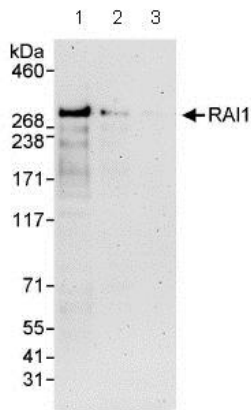
Cytoplasmic and Nuclear. In neurons it is localized to neurites.

## 图片



Immunohistochemistry (Formalin/PFA-fixed paraffin-embedded sections) analysis of human ovarian carcinoma tissue labelling RAI1 with ab86599 at 1/1000 (1µg/ml). Detection: DAB.

Immunohistochemistry (Formalin/PFA-fixed paraffin-embedded sections) - Anti-RAI1 antibody (ab86599)



Western blot - Anti-RAI1 antibody (ab86599)

**All lanes :** Anti-RAI1 antibody (ab86599) at 0.1 µg/ml

**Lane 1 :** Whole cell lysate from HeLa cells at 50 µg

**Lane 2 :** Whole cell lysate from HeLa cells at 15 µg

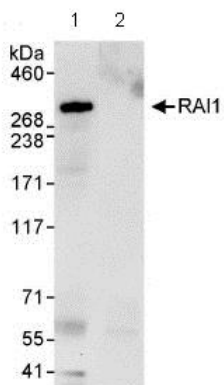
**Lane 3 :** Whole cell lysate from HeLa cells at 5 µg

Developed using the ECL technique.

**Predicted band size:** 203 kDa

**Observed band size:** 280 kDa

**Exposure time:** 3 minutes



Immunoprecipitation - Anti-RAI1 antibody (ab86599)

Western Blot detection of RAI1 in Immunoprecipitates of Whole cell lysate of HeLa cells (1 mg for IP, 20% of IP loaded) using ab86599 at 10 µg/mg lysate for IP and at 1 µg/ml for subsequent Western blot detection. Lane 2 represents control IgG IP.

Detection: Chemiluminescence with an exposure time of 30 seconds.

**Please note:** All products are "FOR RESEARCH USE ONLY. NOT FOR USE IN DIAGNOSTIC PROCEDURES"

### Our Abpromise to you: Quality guaranteed and expert technical support

- Replacement or refund for products not performing as stated on the datasheet
- Valid for 12 months from date of delivery
- Response to your inquiry within 24 hours
- We provide support in Chinese, English, French, German, Japanese and Spanish

- Extensive multi-media technical resources to help you
- We investigate all quality concerns to ensure our products perform to the highest standards

If the product does not perform as described on this datasheet, we will offer a refund or replacement. For full details of the Abpromise, please visit <https://www.abcam.cn/abpromise> or contact our technical team.

### **Terms and conditions**

---

- Guarantee only valid for products bought direct from Abcam or one of our authorized distributors